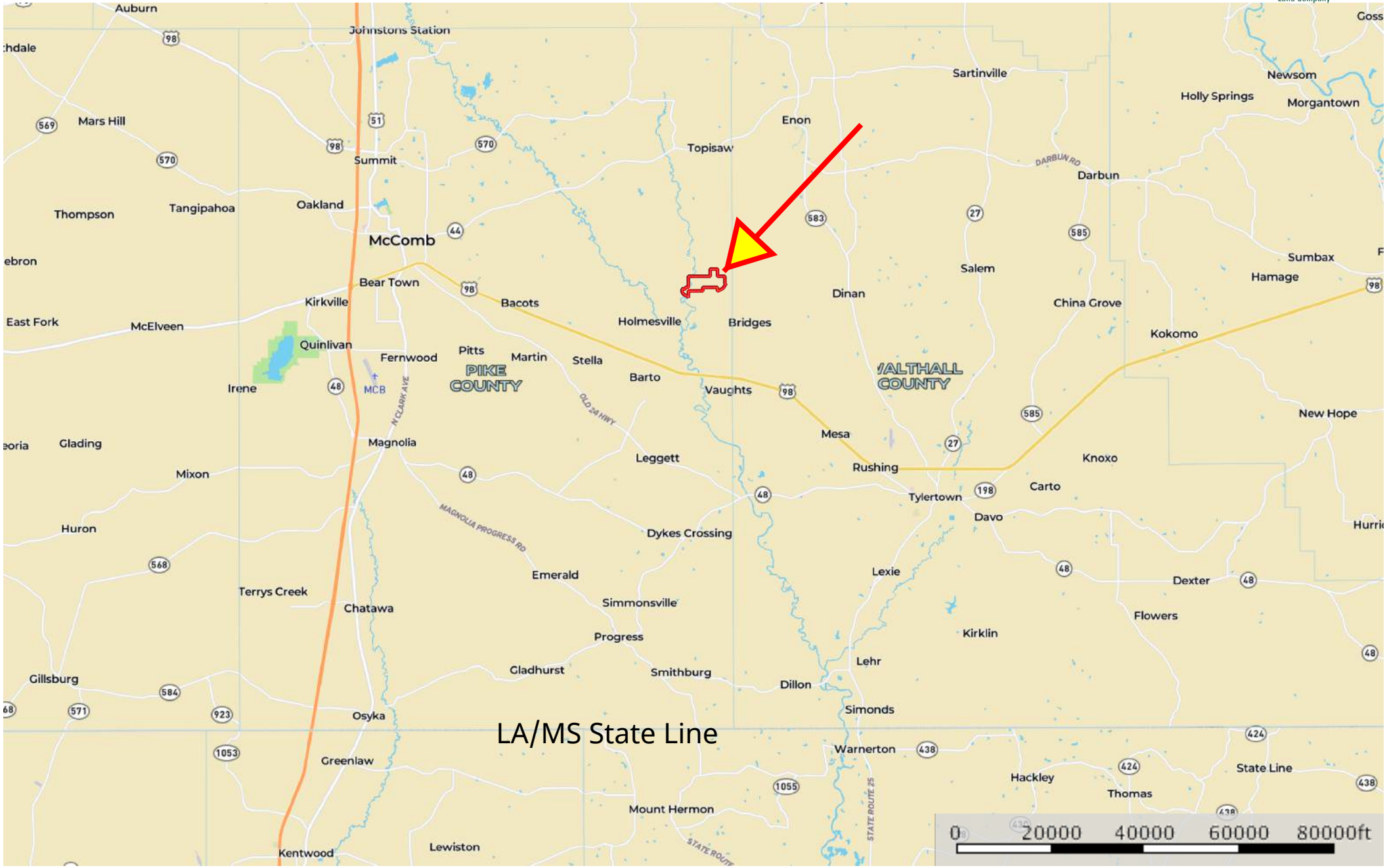



# 423 Acres Matthews Road, McComb, MS

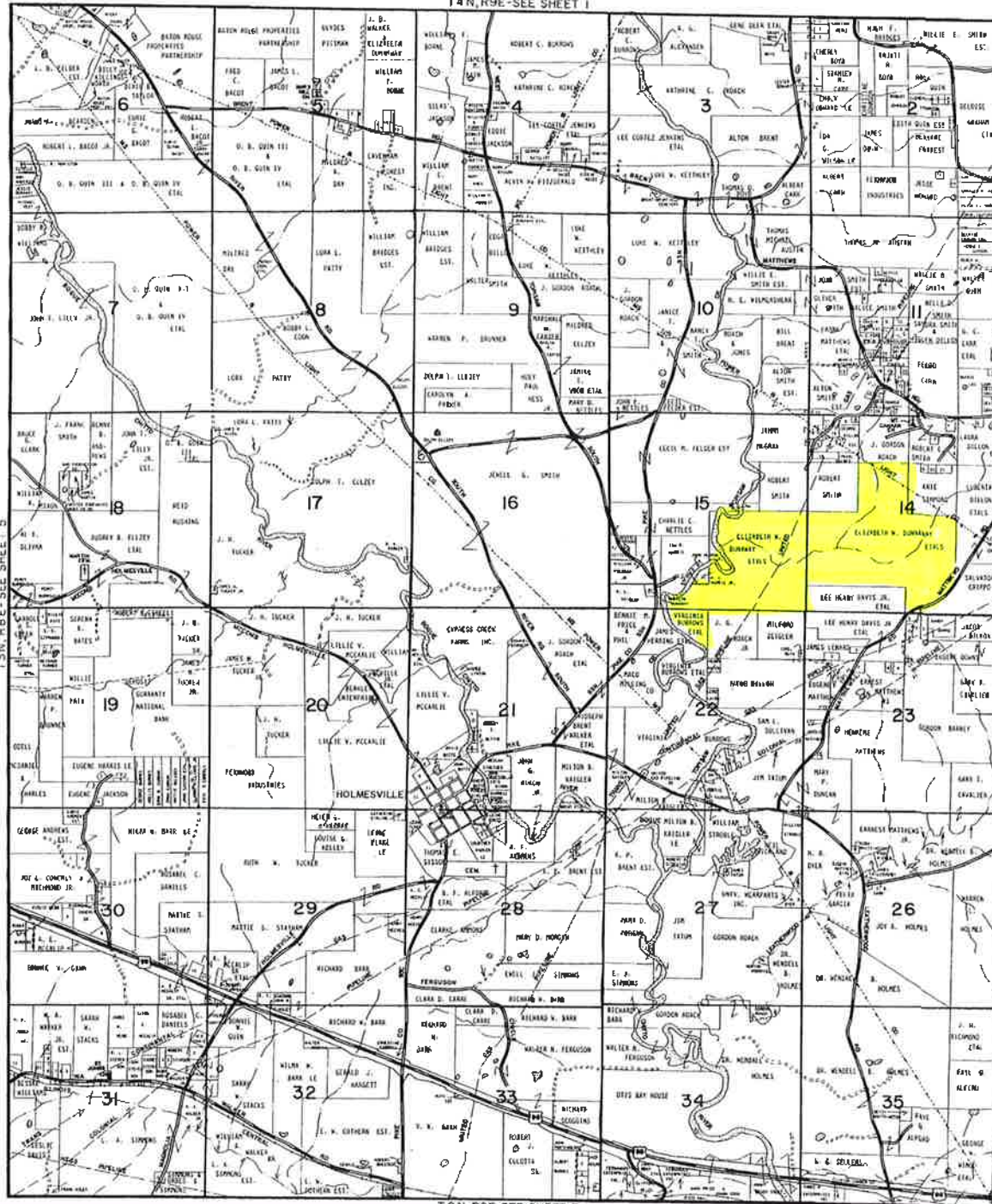
Pike County, Mississippi, 423 AC +/-



 Boundary

# 1991 OWNERSHIP MAP OF T3N,R9E - PIKE COUNTY, MS

T4N,R9E-SEE SHEET 1



SECTION 6  
 SECTION 7  
 SECTION 8  
 SECTION 9  
 SECTION 10  
 SECTION 11  
 SECTION 12  
 SECTION 13  
 SECTION 14  
 SECTION 15  
 SECTION 16  
 SECTION 17  
 SECTION 18  
 SECTION 19  
 SECTION 20  
 SECTION 21  
 SECTION 22  
 SECTION 23  
 SECTION 24  
 SECTION 25  
 SECTION 26  
 SECTION 27  
 SECTION 28  
 SECTION 29  
 SECTION 30  
 SECTION 31  
 SECTION 32  
 SECTION 33  
 SECTION 34  
 SECTION 35

T3N,R9E-SEE SHEETS 5

WALTHALL COUNTY

SECTION 6  
 SECTION 7  
 SECTION 8  
 SECTION 9  
 SECTION 10  
 SECTION 11  
 SECTION 12  
 SECTION 13  
 SECTION 14  
 SECTION 15  
 SECTION 16  
 SECTION 17  
 SECTION 18  
 SECTION 19  
 SECTION 20  
 SECTION 21  
 SECTION 22  
 SECTION 23  
 SECTION 24  
 SECTION 25  
 SECTION 26  
 SECTION 27  
 SECTION 28  
 SECTION 29  
 SECTION 30  
 SECTION 31  
 SECTION 32  
 SECTION 33  
 SECTION 34  
 SECTION 35

SECTION 6  
 SECTION 7  
 SECTION 8  
 SECTION 9  
 SECTION 10  
 SECTION 11  
 SECTION 12  
 SECTION 13  
 SECTION 14  
 SECTION 15  
 SECTION 16  
 SECTION 17  
 SECTION 18  
 SECTION 19  
 SECTION 20  
 SECTION 21  
 SECTION 22  
 SECTION 23  
 SECTION 24  
 SECTION 25  
 SECTION 26  
 SECTION 27  
 SECTION 28  
 SECTION 29  
 SECTION 30  
 SECTION 31  
 SECTION 32  
 SECTION 33  
 SECTION 34  
 SECTION 35



REPRODUCTION OR ALTERATION IN WHOLE OR PART WITHOUT WRITTEN PERMISSION OF TAB MAP COMPANY IS PROHIBITED.

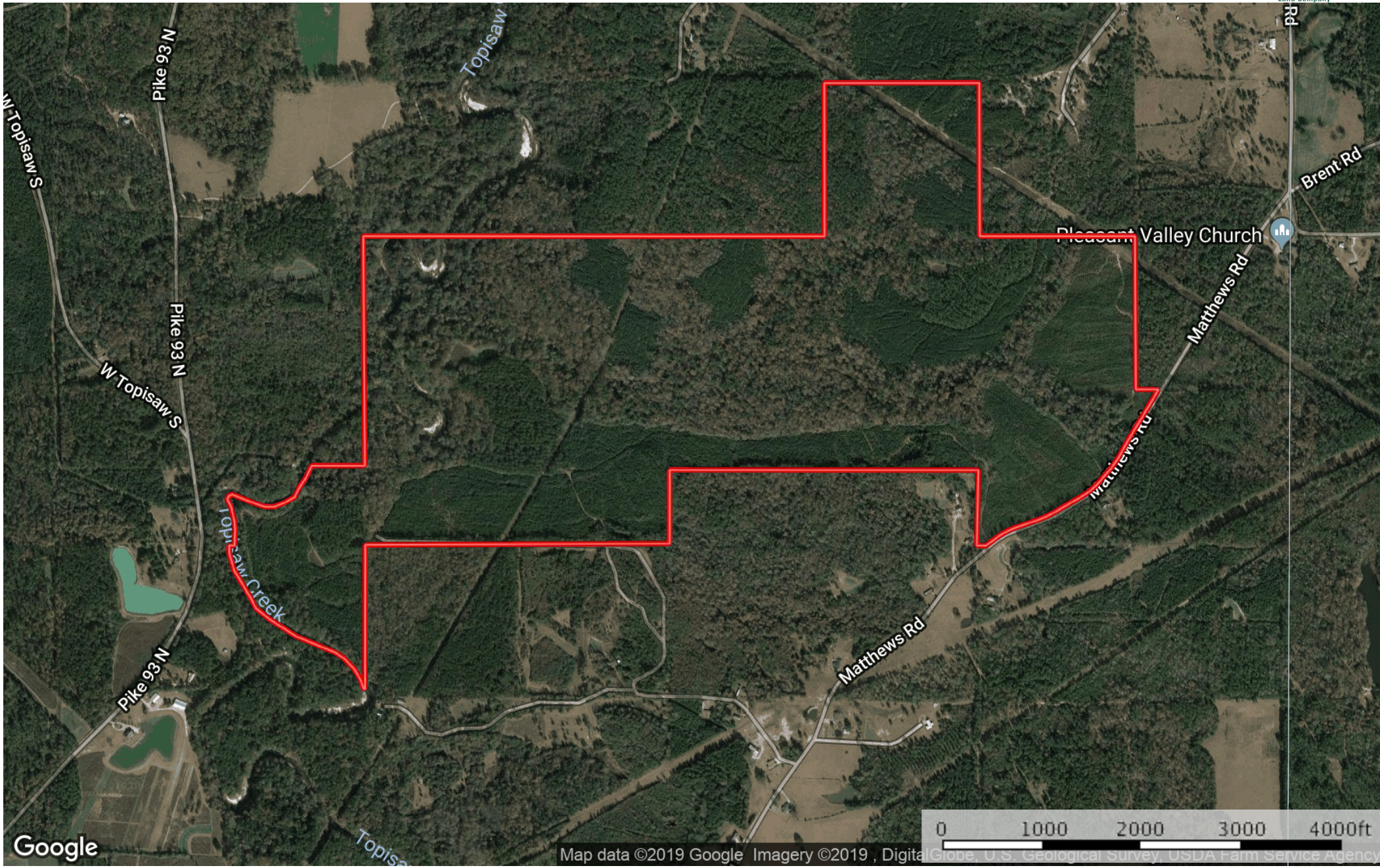
COPYRIGHT: JUNE, 1991



T3N,R9E  
 SHEET 6


# 423 Acres Matthews Road, McComb, MS

Pike County, Mississippi, 423 AC +/-



Google

Map data ©2019 Google Imagery ©2019 , DigitalGlobe, U.S. Geological Survey, USDA Farm Service Agency


 Boundary

# Topisaw Farm

+/- 423 acres Pike County, Miss

Scott Lindsey  
United Country Gibson Realty  
UC Hunting Properties  
601-248-3561

## Legend

 Roads

Google earth

© 2017 Google

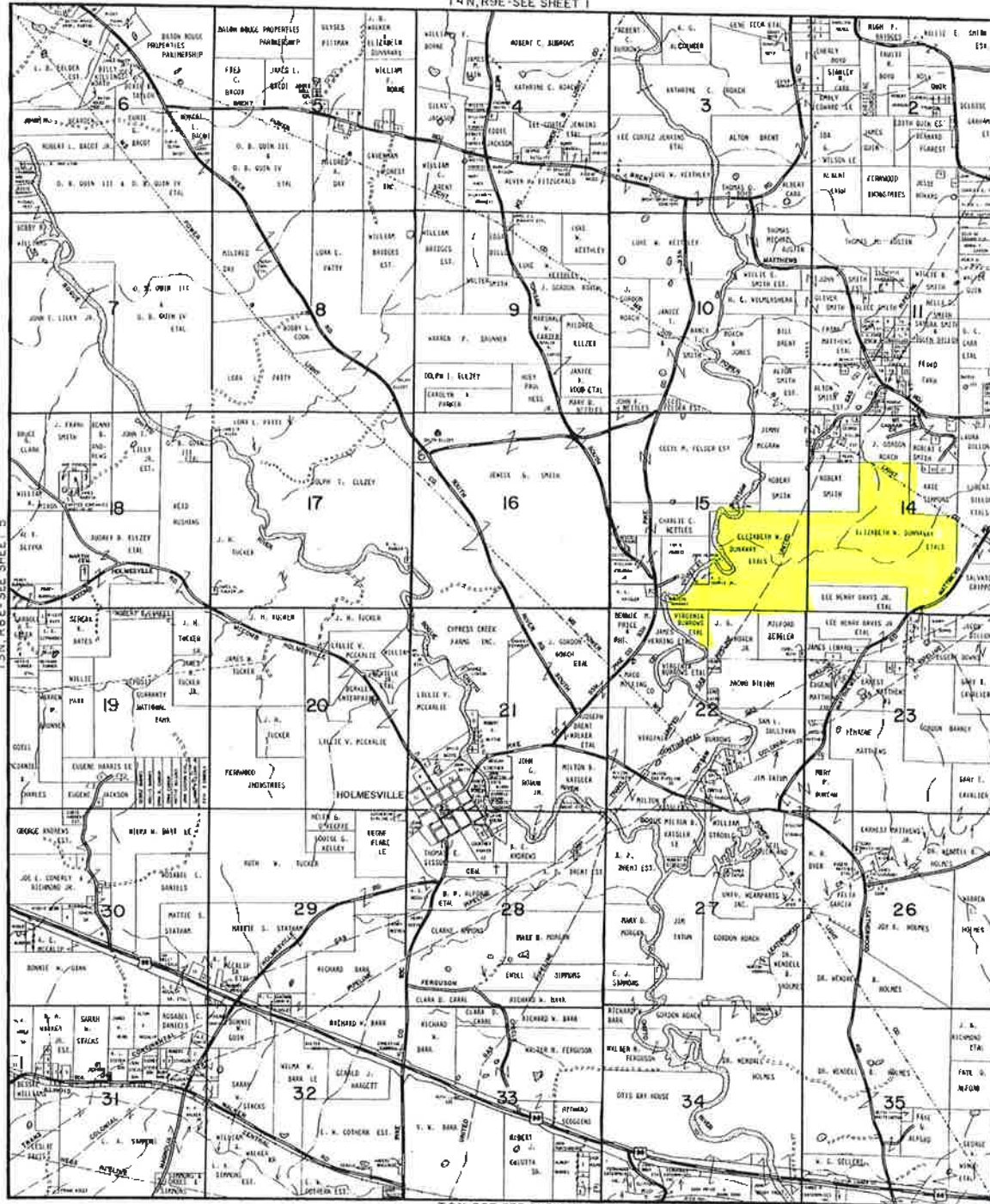
Fannie Quin Rd

2000 ft



# 1991 OWNERSHIP MAP OF T3N, R9E - PIKE COUNTY, MS

T4N, R9E-SEE SHEET 1



T2N, R9E-SEE SHEET 7

REPRODUCTION OF ALTERATION IN WHOLE OR PART WITHOUT WRITTEN PERMISSION OF TAB MAP COMPANY IS PROHIBITED.

COPYRIGHT: JUNE, 1991



T3N, R9E  
SHEET 6



T3N, R9E-SEE SHEET 5

T3N, R9E-SEE SHEET 6

T3N, R9E-SEE SHEET 7

T3N, R9E-SEE SHEET 8

T3N, R9E-SEE SHEET 9

T4N, R9E-SEE SHEET 1

T4N, R9E-SEE SHEET 2

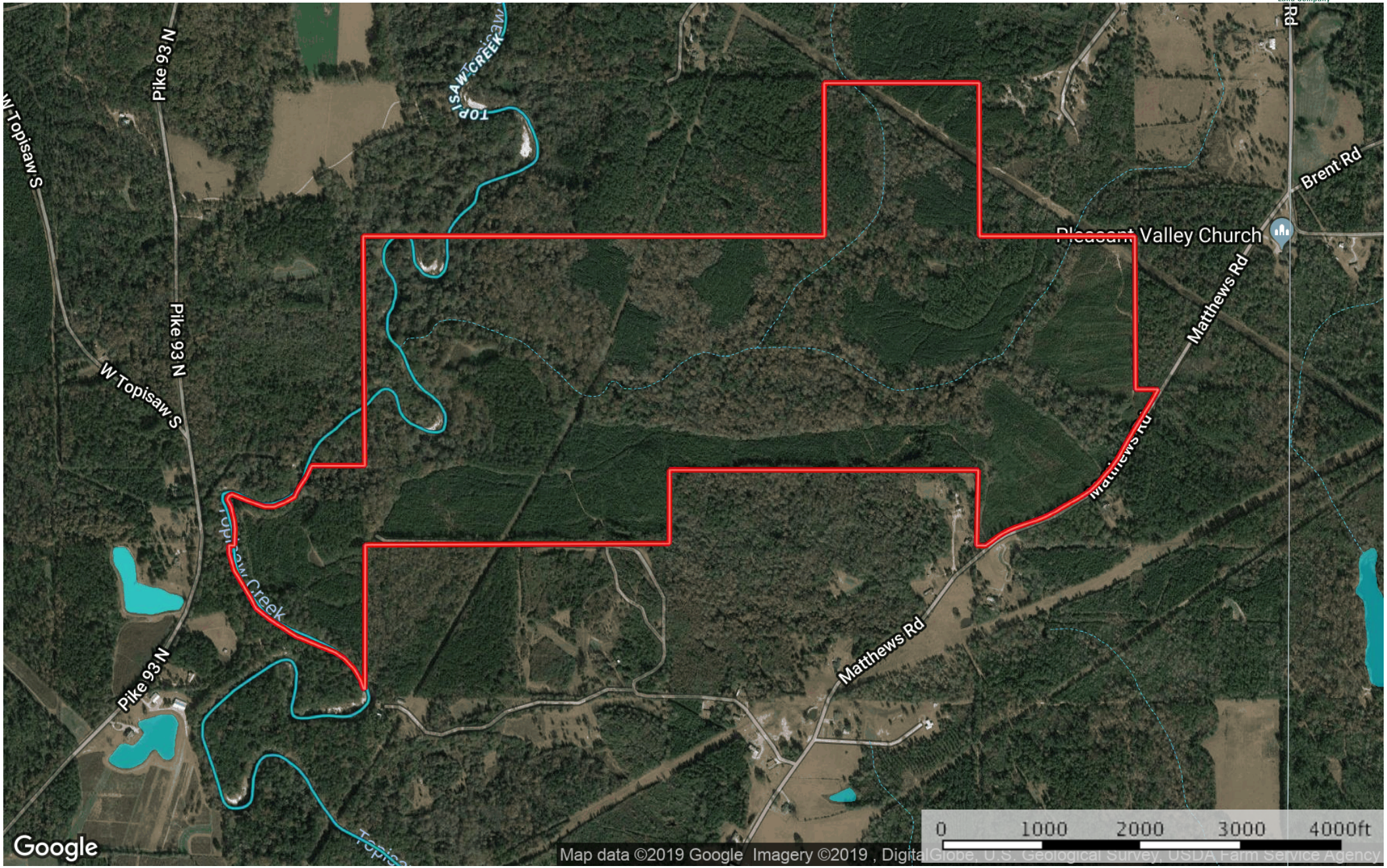
T4N, R9E-SEE SHEET 3

T4N, R9E-SEE SHEET 4

WALTHALL COUNTY

# 423 Acres Matthews Road, McComb, MS

Pike County, Mississippi, 423 AC +/-

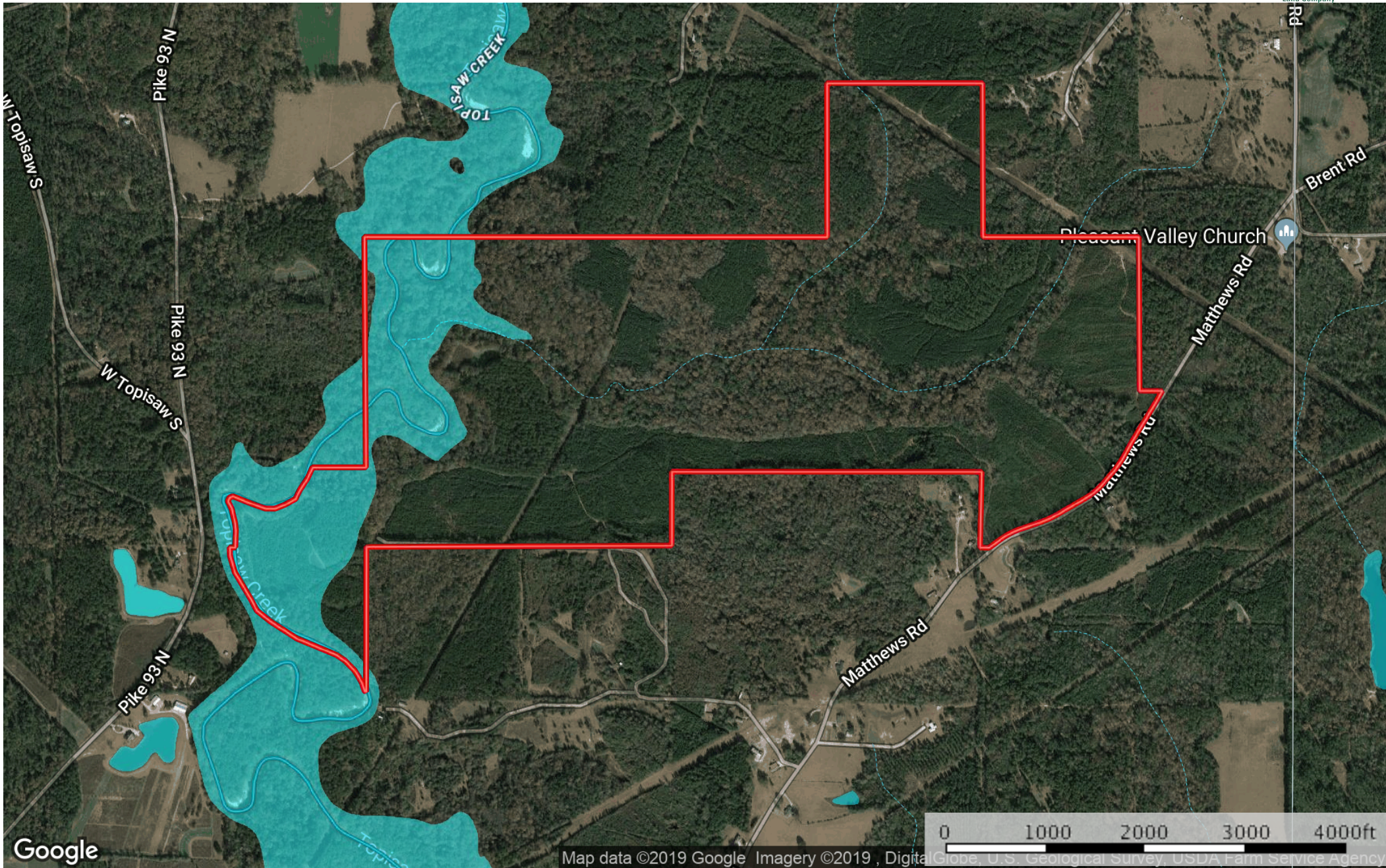


Google Map data ©2019 Google Imagery ©2019 , DigitalGlobe, U.S. Geological Survey, USDA Farm Service Agency

- Boundary
- Stream, Intermittent
- River/Creek
- Water Body

# 423 Acres Matthews Road, McComb, MS

Pike County, Mississippi, 423 AC +/-

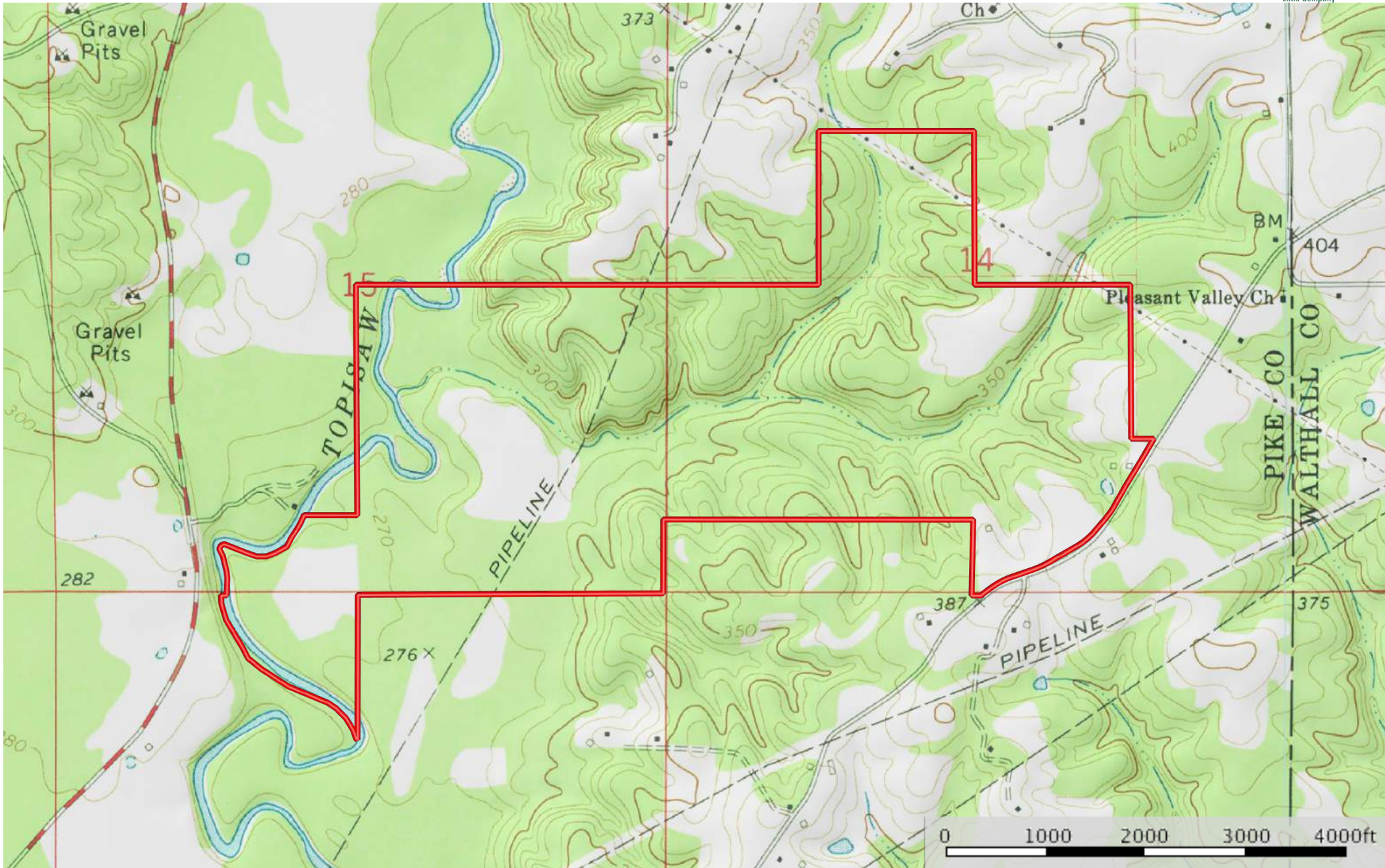



Google

Map data ©2019 Google Imagery ©2019 , DigitalGlobe, U.S. Geological Survey, USDA Farm Service Agency

- Boundary
- 100 Year Floodplain
- 500 Year Floodplain
- Stream, Intermittent
- River/Creek
- Water Body

**423 Acres Matthews Road, McComb, MS**  
Pike County, Mississippi, 423 AC +/-

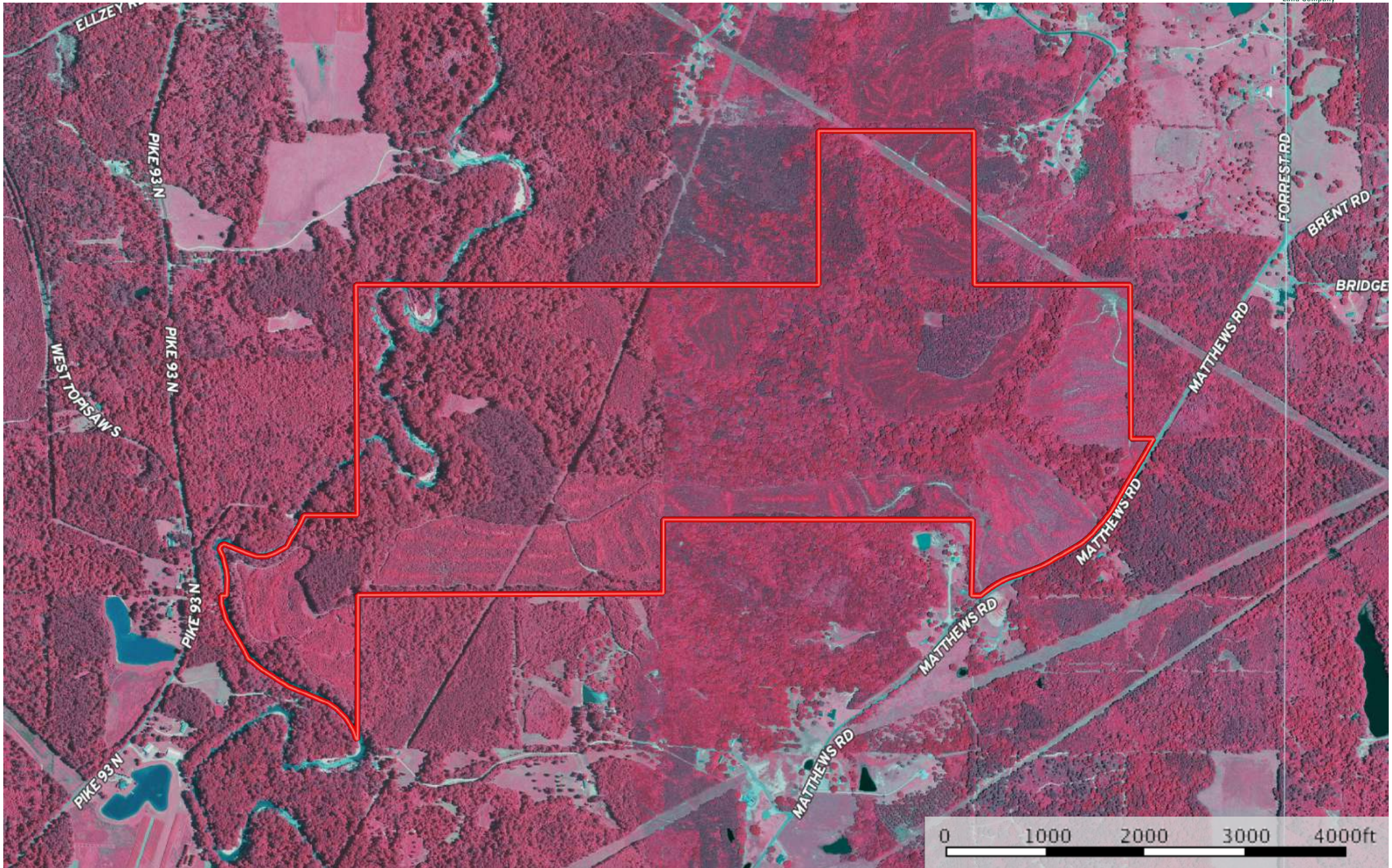



 Boundary



# 423 Acres Matthews Road, McComb, MS

Pike County, Mississippi, 423 AC +/-



 Boundary