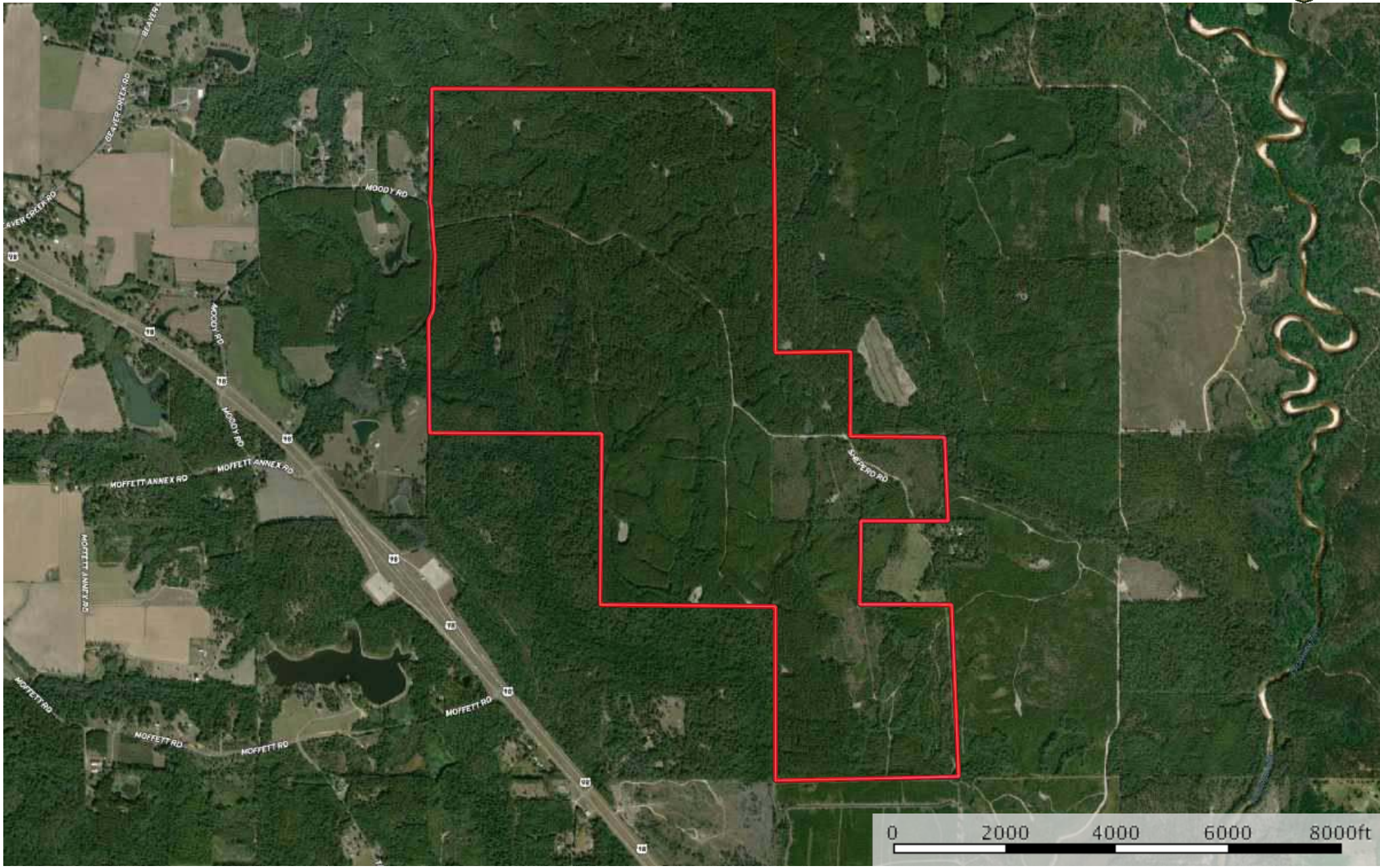



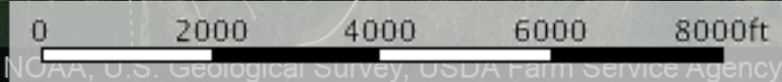
Boundary



 Boundary

Piney Forest Tree Farm

George County, Mississippi, 1118 AC +/-



©2019, Landsat / Copernicus, Maxar Technologies, Mississippi GIS Coordinating Council, NOAA, U.S. Geological Survey, USDA Farm Service Agency

— Vickery Ln □ Boundary

Piney Forest Tree Farm

George County, Mississippi, 1118 AC +/-

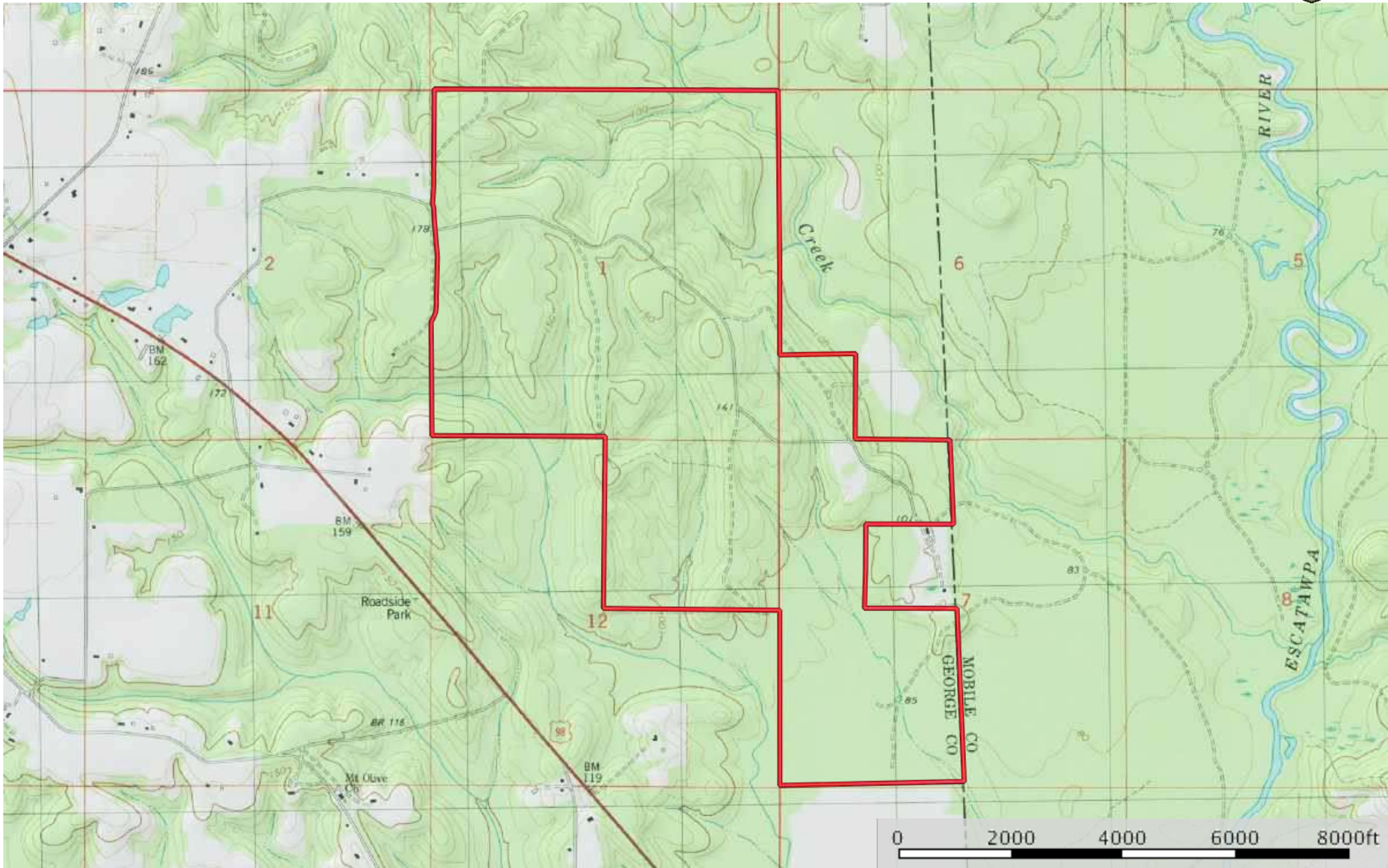



©2019, Landsat / Copernicus, Maxar Technologies, Mississippi GIS Coordinating Council, NOAA, U.S. Geological Survey, USDA Farm Service Agency

- Boundary
- Stream, Intermittent
- River/Creek
- Water Body

Piney Forest Tree Farm

George County, Mississippi, 1118 AC +/-



 Boundary



Boundary

Boundary 1127.1 ac









SOIL CODE	SOIL DESCRIPTION	ACRES	%	CAP
BaA	Basin fine sandy loam, 0 to 2 percent slopes	9.2	0.81	2w
HaA	Harleston fine sandy loam, 0 to 2 percent slopes	34.3	3.04	2w
AtA	Atmore fine sandy loam, 0 to 2 percent slopes	126.4	11.21	4w
BeA	Benndale fine sandy loam, 0 to 2 percent slopes	20.5	1.82	1
BeB	Benndale fine sandy loam, 2 to 5 percent slopes	178.5	15.82	2e
AlB	Alaga loamy sand, terrace, 0 to 5 percent slopes	39.0	3.46	3s
Dh	Dorovan-Johnston association	118.1	10.47	7w
RuA	Rumford sandy loam, 0 to 2 percent slopes (latonia)	3.7	0.33	2s
AgC	Alaga loamy sand, 5 to 8 percent slopes	9.6	0.85	4s
BeC	Benndale fine sandy loam, 5 to 8 percent slopes	20.7	1.83	3e
MIA	McLaurin fine sandy loam, 0 to 2 percent slopes	28.6	2.54	1
Ln	Lenoir silt loam	4.2	0.37	3w
SuB	Susquehanna complex, 2 to 5 percent slopes	15.3	1.35	4e
SuD	Susquehanna complex, 5 to 12 percent slopes	6.7	0.59	6e
SxE	Susquehanna-Benndale complex, 12 to 17 percent slopes	39.7	3.52	6e
MIB	McLaurin fine sandy loam, 2 to 5 percent slopes	42.7	3.78	2e
AgD	Alaga loamy sand, 8 to 12 percent slopes	6.3	0.56	6s
BnC	Benndale complex, 5 to 12 percent slopes	359.7	31.9	3e
AgB	Alaga loamy sand, 0 to 5 percent slopes	12.6	1.12	3s
Lf	Leaf-Lenoir association	14.4	1.28	4w
EsB	Eustis loamy sand, 0 to 5 percent slopes	17.9	1.59	3s
CaE	Cahaba fine sandy loam, 12 to 17 percent slopes (smithdale)	6.5	0.58	6e
MIC	McLaurin fine sandy loam, 5 to 8 percent slopes	2.1	0.19	3e
MID	McLaurin fine sandy loam, 8 to 12 percent slopes (heidel)	5.4	0.48	4e
EsD	Eustis loamy sand, 5 to 12 percent slopes	4.8	0.43	6e
TOTALS		1127.1	100%	3.41

Capability Legend

Increased Limitations and Hazards

Decreased Adaptability and Freedom of Choice Users

Land, Capability

								
	1	2	3	4	5	6	7	8
'Wild Life'	•	•	•	•	•	•	•	•
Forestry	•	•	•	•	•	•	•	
Limited	•	•	•	•	•	•	•	
Moderate	•	•	•	•	•	•		
Intense	•	•	•	•	•			
Limited	•	•	•	•				
Moderate	•	•	•					
Intense	•	•						
Very Intense	•							

Grazing Cultivation

(c) climatic limitations (e) susceptibility to erosion

(s) soil limitations within the rooting zone (w) excess of water