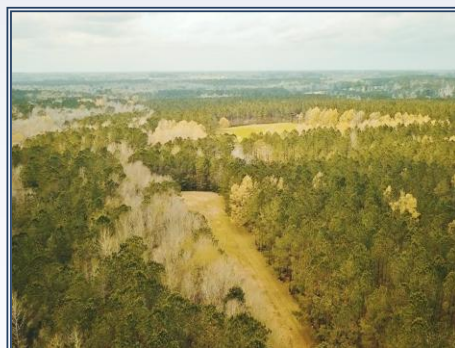




Trison Farm is a "must-see" due to its unique features and amenities. Located in northeast Washington Parish, this 650+/- acre property has it all...60 +/- acres of improved pasture, private lake, Hayes Creek runs through the property, two lodge-type houses, main house, entertainment venue w/ large deck and walk-in wine cellar. Trison Farm has 500+/- acres under high fence with Red Stag & Whitetail deer managed by Covey Rise, interior roads, large deer food plots, tree stands, shooting houses, gun range, 20 year old planted pine, large enclosed equipment sheds and customized stainless steel skinning room. This property has multiple uses...hunting, fishing, entertainment, timber investment, family gatherings, swimming, water skiing, corporate meetings, conferences, team building activities and retreats. You won't find another property like Trison Farm in the surrounding area or states, it is that special and unique.

32410 Hwy 438, Franklinton, LA

30.827955, -90.228561 GPS



**\$5,799,000**

650 Acres  
 MLS #131329  
 UC #23042-31329



**Bradley Creel**  
 bcreel93@gmail.com  
 Office: (601) 250-0017  
 Cell: (601) 551-6778  
 SouthernStatesRealty.com