



**Stuart Hemphill**  
 stuarthemphill58@gmail.com  
 Office: (601) 250-0017  
 Cell: (601) 248-7637  
 SouthernStatesRealty.com



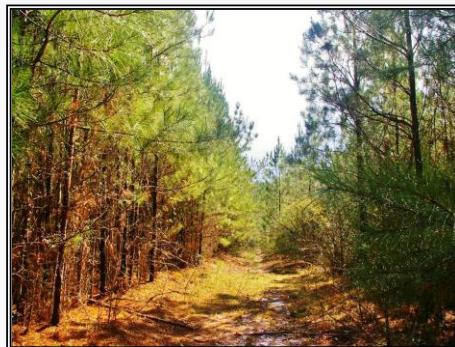
# SOUTHERN STATES REALTY



Check out this nice tract with paved road frontage in the Enterprise School District! With approximately 450 ft. of paved road frontage, this tract provides multiple home sites as well as great hunting!

**Mallalieu Drive SE, Ruth**

31.411329, -90.271565 GPS



**\$88,748**

26.46 Acres  
 MLS #131725  
 UC #23042-31725

