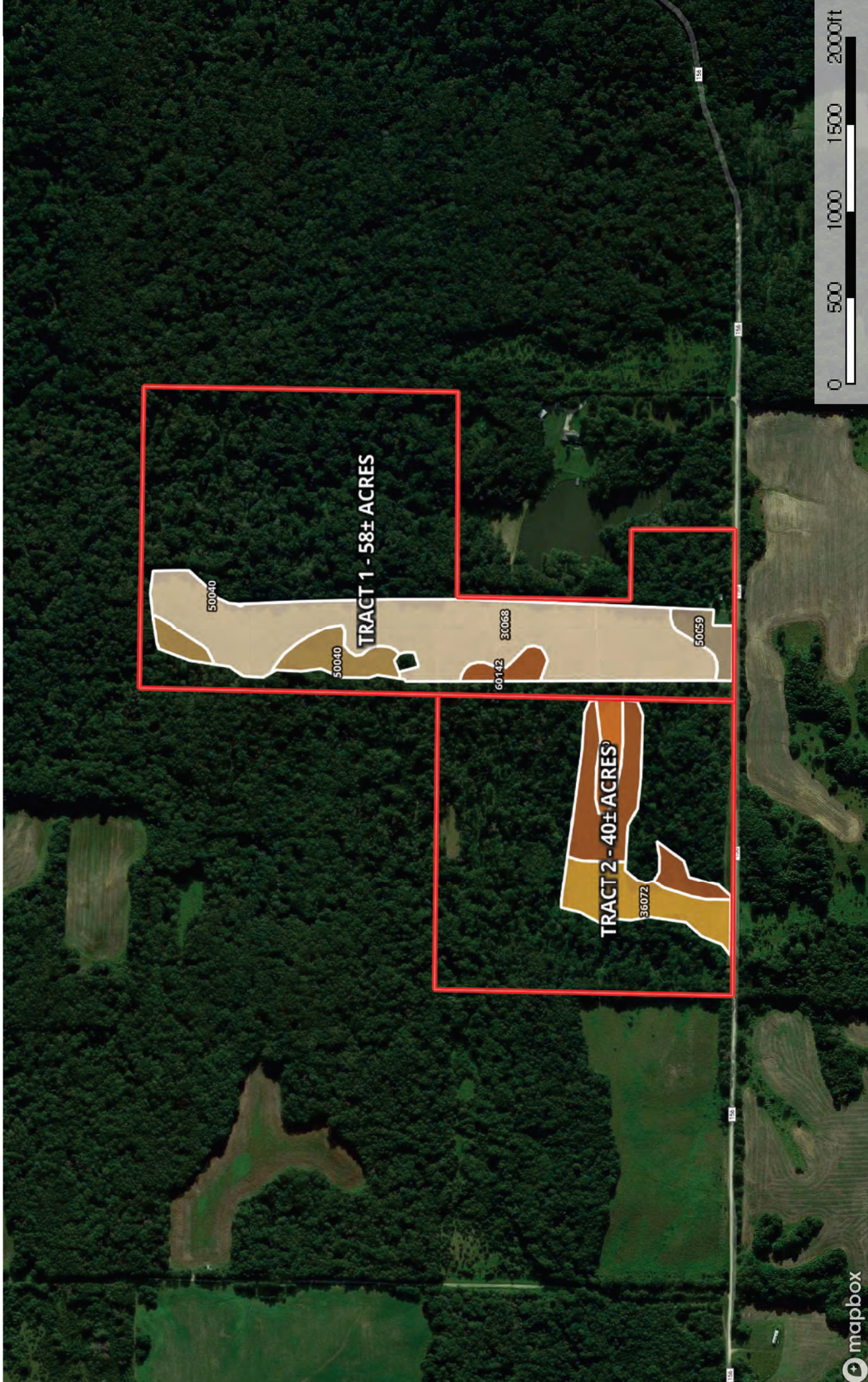


**Shelby County, MO Land iAuction - Hudson Family**  
Missouri, AC +/-



mapbox

Boundary

Jason Wallingford  
P: (217) 214-2752

www.iAuctionandRealty.com

520 N 30th, Suite 19, Quincy, IL 62301

The information contained herein was obtained from sources deemed to be reliable. Maplight Services makes no warranties or guarantees as to the completeness or accuracy thereof.



Boundary 28.3 ac

SOIL CODE	SOIL DESCRIPTION	ACRES	%	CAP
50040	Lindley loam, 14 to 20 percent slopes, eroded	2.3	8.14	6e
30100	Keswick loam, Audrain-Shelby plain, 5 to 9 percent slopes, eroded	1.1	4.0	4e
30068	Gorin silt loam, 5 to 9 percent slopes, eroded	15.7	55.37	3e
36072	Blackoar silt loam, 1 to 4 percent slopes, frequently flooded	3.4	11.85	3w
60142	Keswick loam, 9 to 14 percent slopes, eroded	4.8	16.85	4e
50059	Mexico silt loam, 1 to 4 percent slopes, eroded	1.1	3.79	3e
TOTALS		28.3	100%	3.45

### Capability Legend

Increased Limitations and Hazards

Decreased Adaptability and Freedom of Choice Users

Land, Capability

	1	2	3	4	5	6	7	8
'Wild Life'	•	•	•	•	•	•	•	•
Forestry	•	•	•	•	•	•	•	
Limited	•	•	•	•	•	•	•	
Moderate	•	•	•	•	•	•		
Intense	•	•	•	•	•			
Limited	•	•	•	•				
Moderate	•	•	•					
Intense	•	•						
Very Intense	•							

### Grazing Cultivation

(c) climatic limitations (e) susceptibility to erosion

(s) soil limitations within the rooting zone (w) excess of water