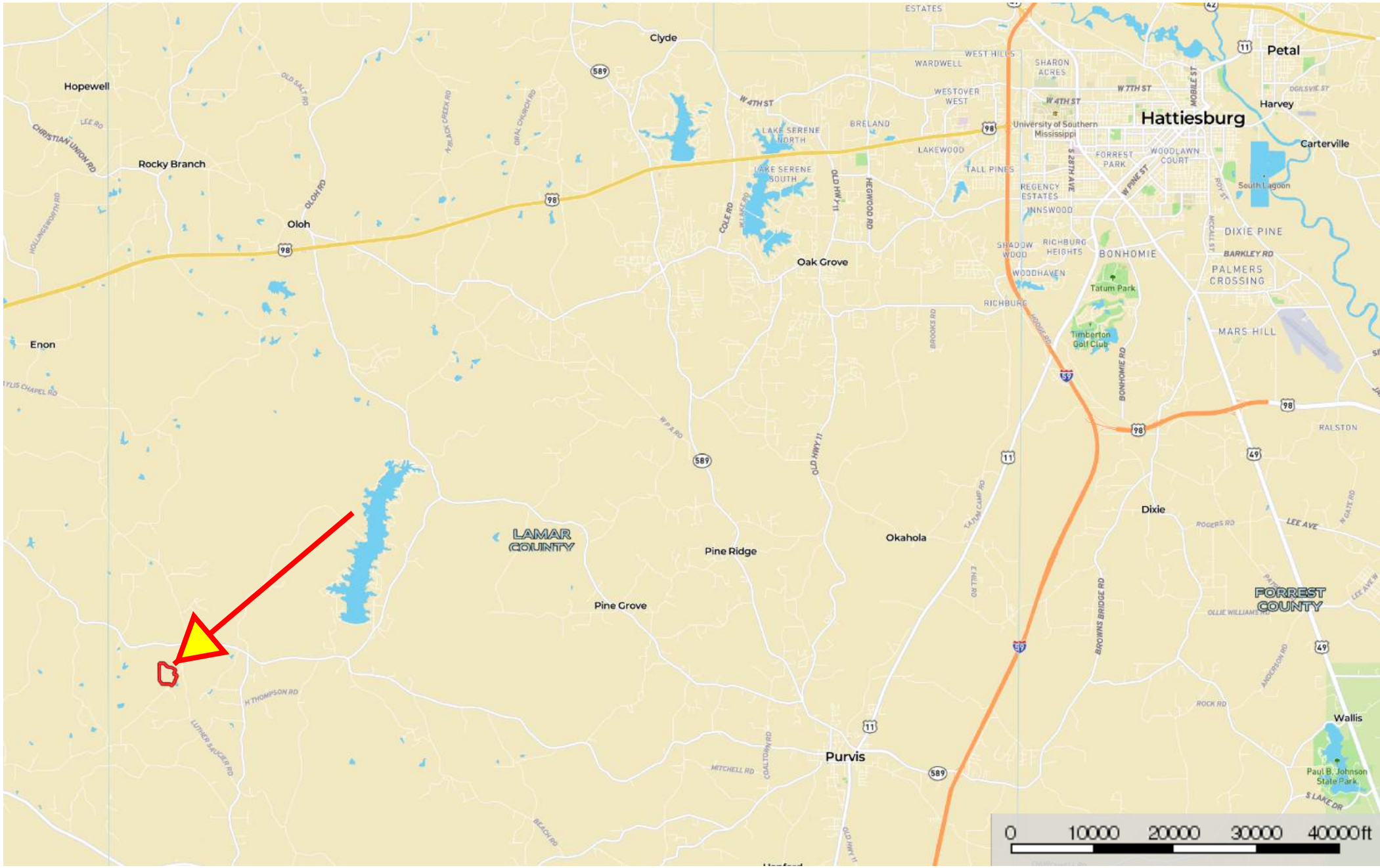

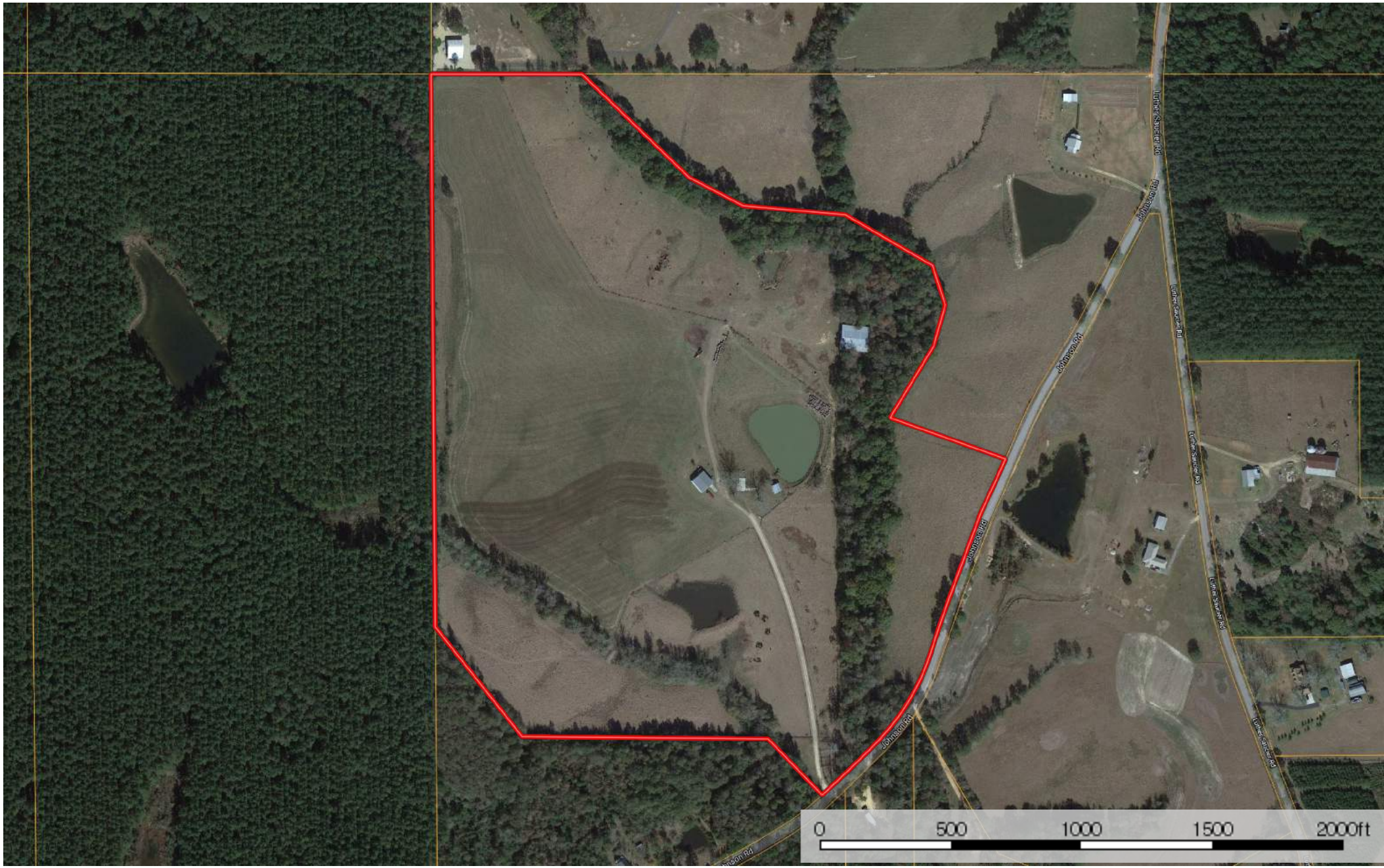



JD-Johnson Rd Lumberton Mississippi, AC +/-



 Boundary



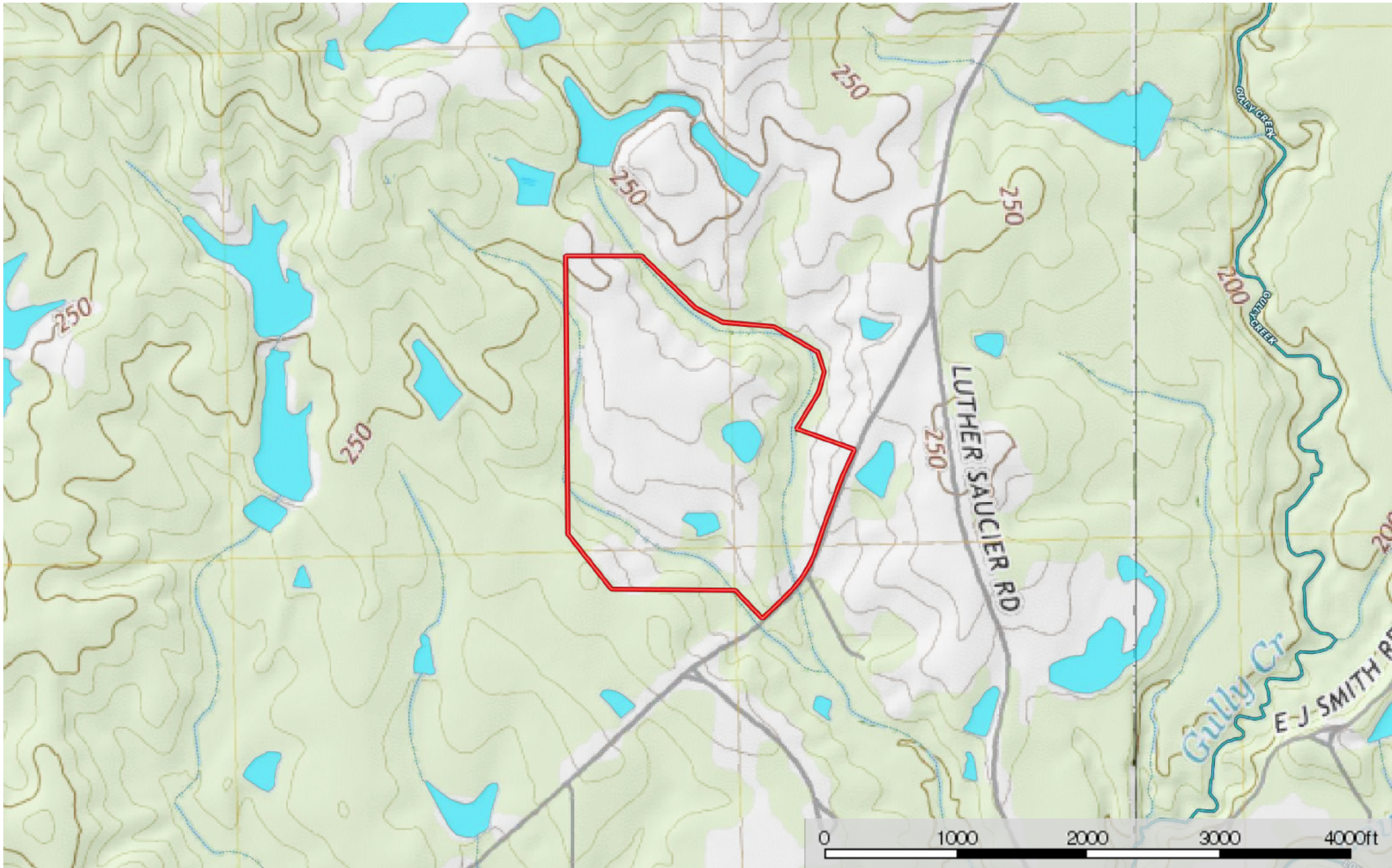
 Boundary



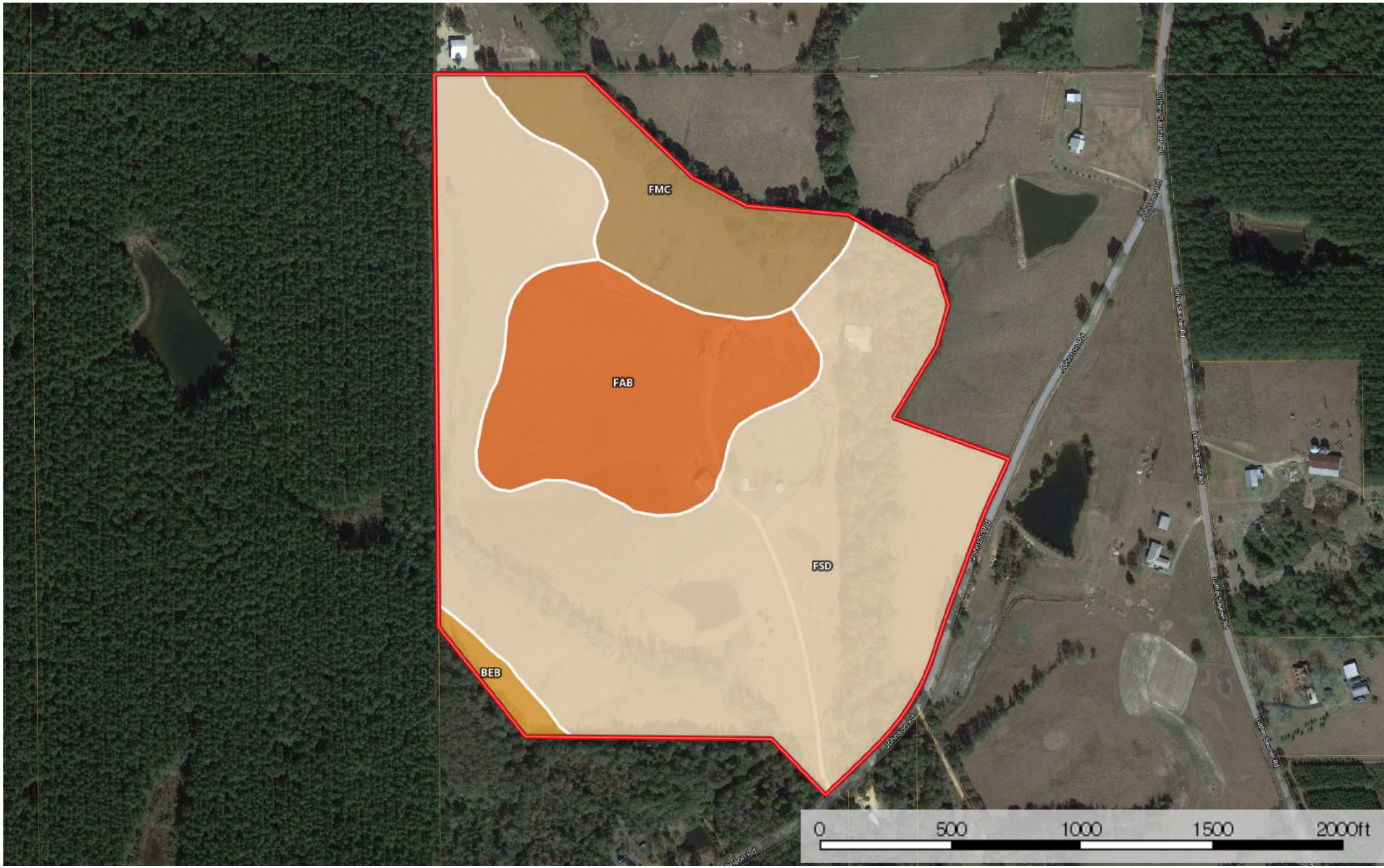
- Boundary
- 100 Year Floodplain
- 500 Year Floodplain
- Floodway
- Special
- Unmapped/ Not Included
- Stream, Intermittent
- River/Creek
- Water Body


JD-Johnson Rd Lumberton

Mississippi, AC +/-



- Boundary
- Stream, Intermittent
- River/Creek
- Water Body



 Boundary

|  Boundary 72.1 ac









SOIL CODE	SOIL DESCRIPTION	ACRES	%	CAP
FMC	Freestone-McLaurin-Susquehanna association, rolling (freest-mclaurin-susquehanna)	8.9	12.4	3e
FaB	Falkner silt loam, 2 to 5 percent slopes, lower coastal plain	14.1	19.59	3e
FsD	Freestone, Susquehanna, and Prentiss soils, 5 to 12 percent slopes (freest, susquehanna and prentiss)	47.9	66.43	3e
BeB	Baxterville fine sandy loam, 2 to 5 percent slopes	1.1	1.58	2e
TOTALS		72.1	100%	2.98

Capability Legend

Increased Limitations and Hazards

Decreased Adaptability and Freedom of Choice Users

Land, Capability

								
	1	2	3	4	5	6	7	8
'Wild Life'	•	•	•	•	•	•	•	•
Forestry	•	•	•	•	•	•	•	
Limited	•	•	•	•	•	•	•	
Moderate	•	•	•	•	•	•		
Intense	•	•	•	•	•			
Limited	•	•	•	•				
Moderate	•	•	•					
Intense	•	•						
Very Intense	•							

Grazing Cultivation

(c) climatic limitations (e) susceptibility to erosion

(s) soil limitations within the rooting zone (w) excess of water