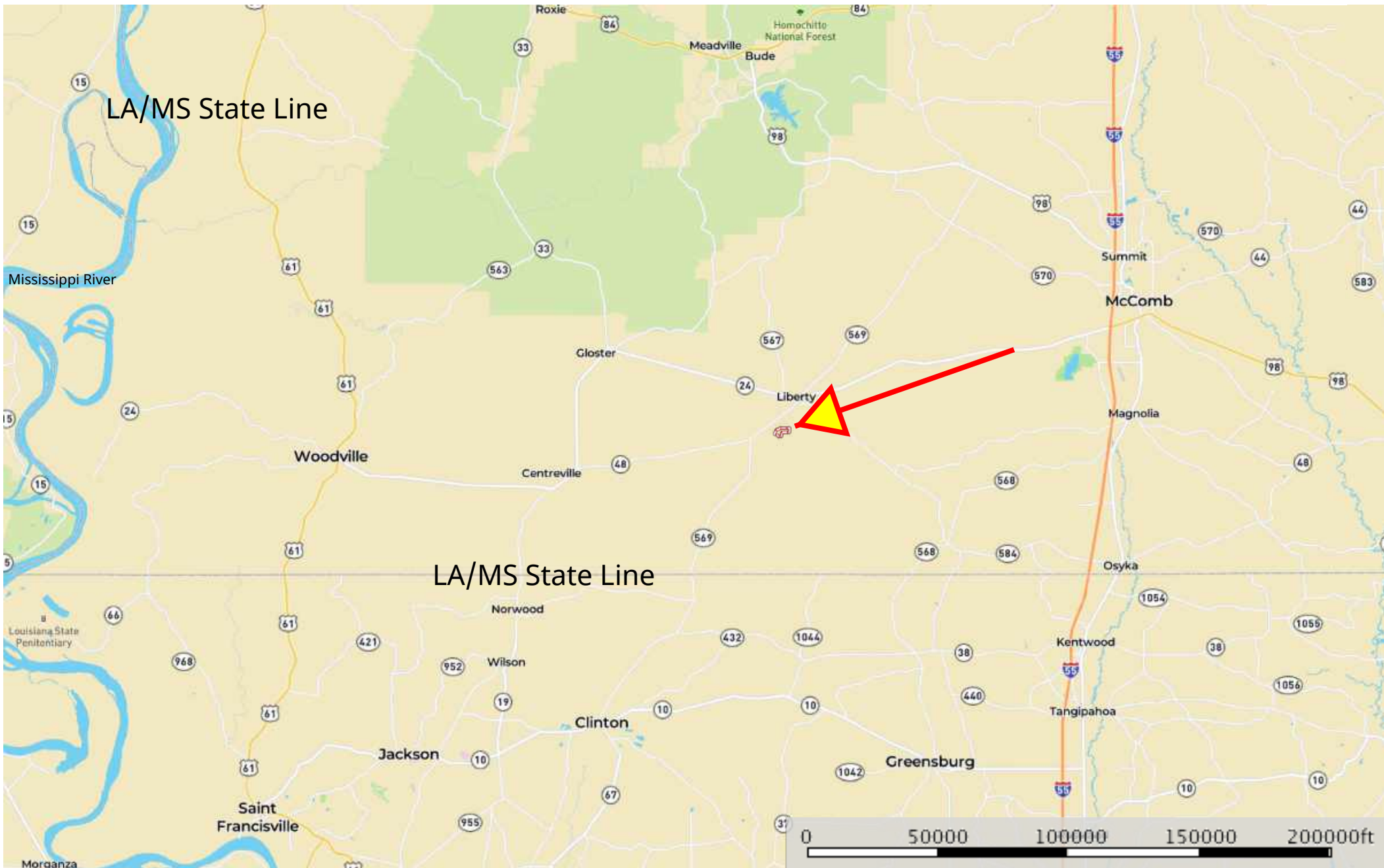


3834 County Farm Rd

Amite County, Mississippi, 191 AC +/-



 Boundary

3834 County Farm Rd
Amite County, Mississippi, 191 AC +/-




Google

Map data ©2019 Imagery ©2019 , Maxar Technologies, U.S. Geological Survey, USDA Farm Service Agency

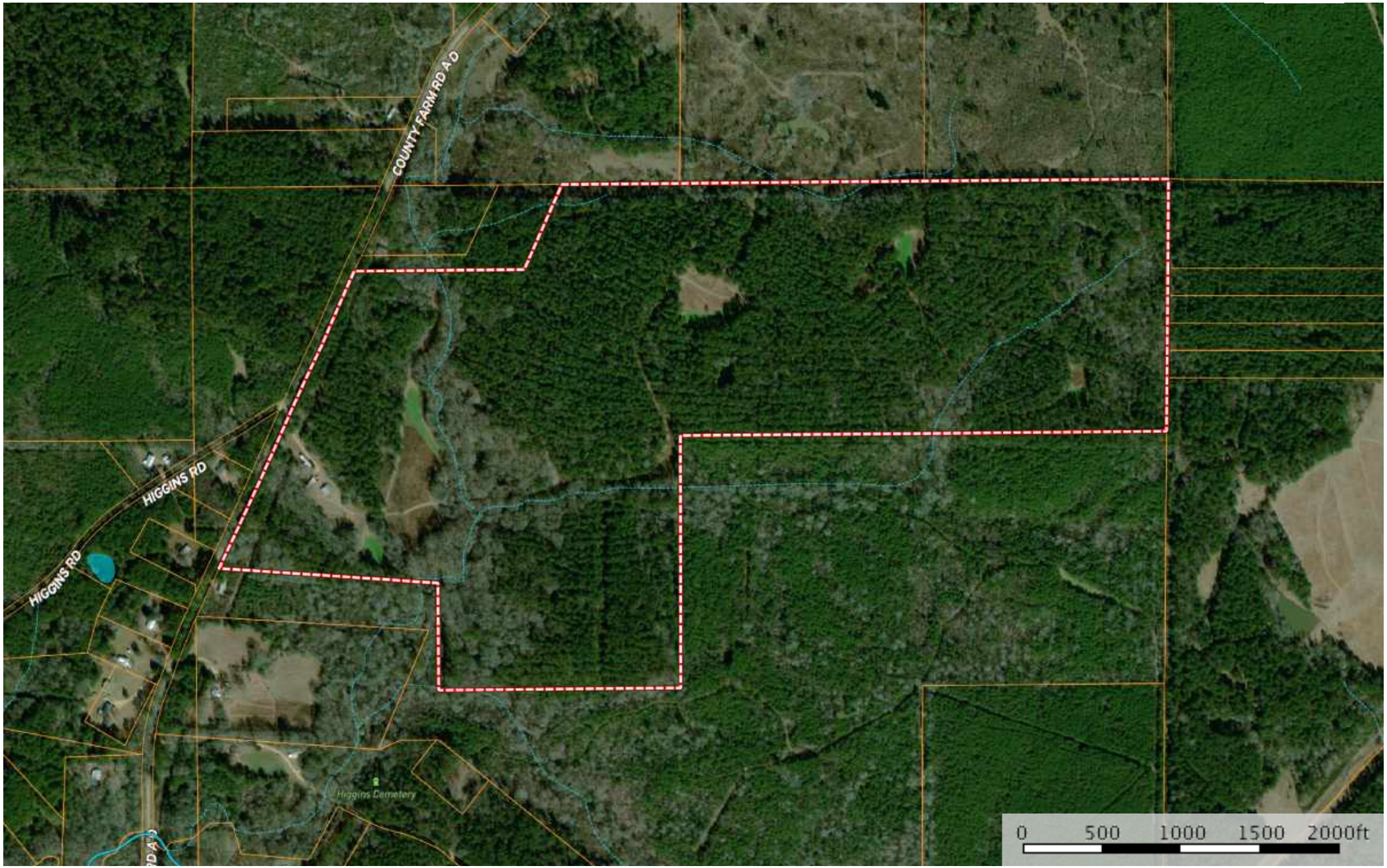
 Boundary

Brent Barron
P: (601) 248-3849

 The information contained herein was obtained from sources deemed to be reliable. MapRight Services makes no warranties or guarantees as to the completeness or accuracy thereof.

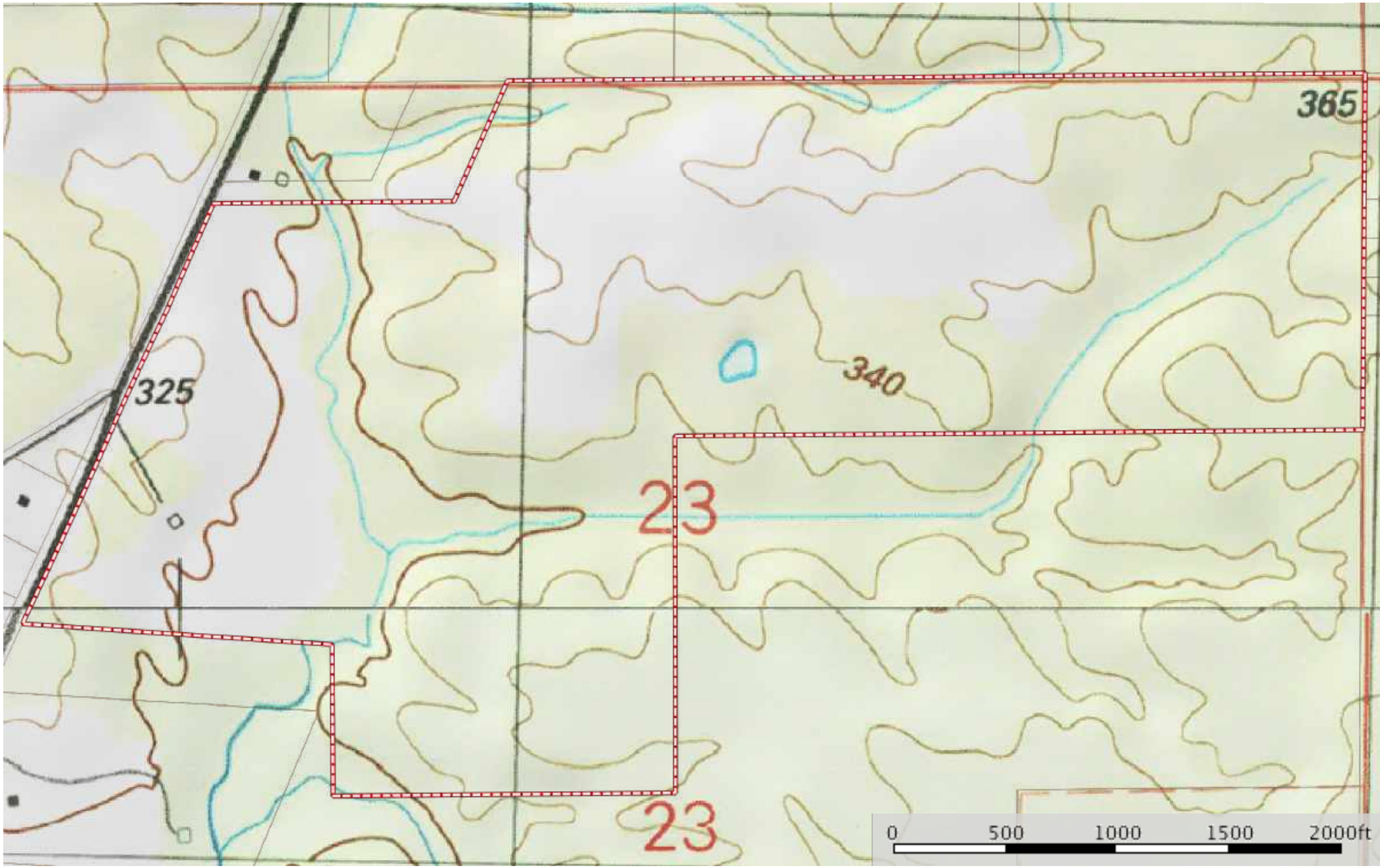
3834 County Farm Rd


Amite County, Mississippi, 191 AC +/-



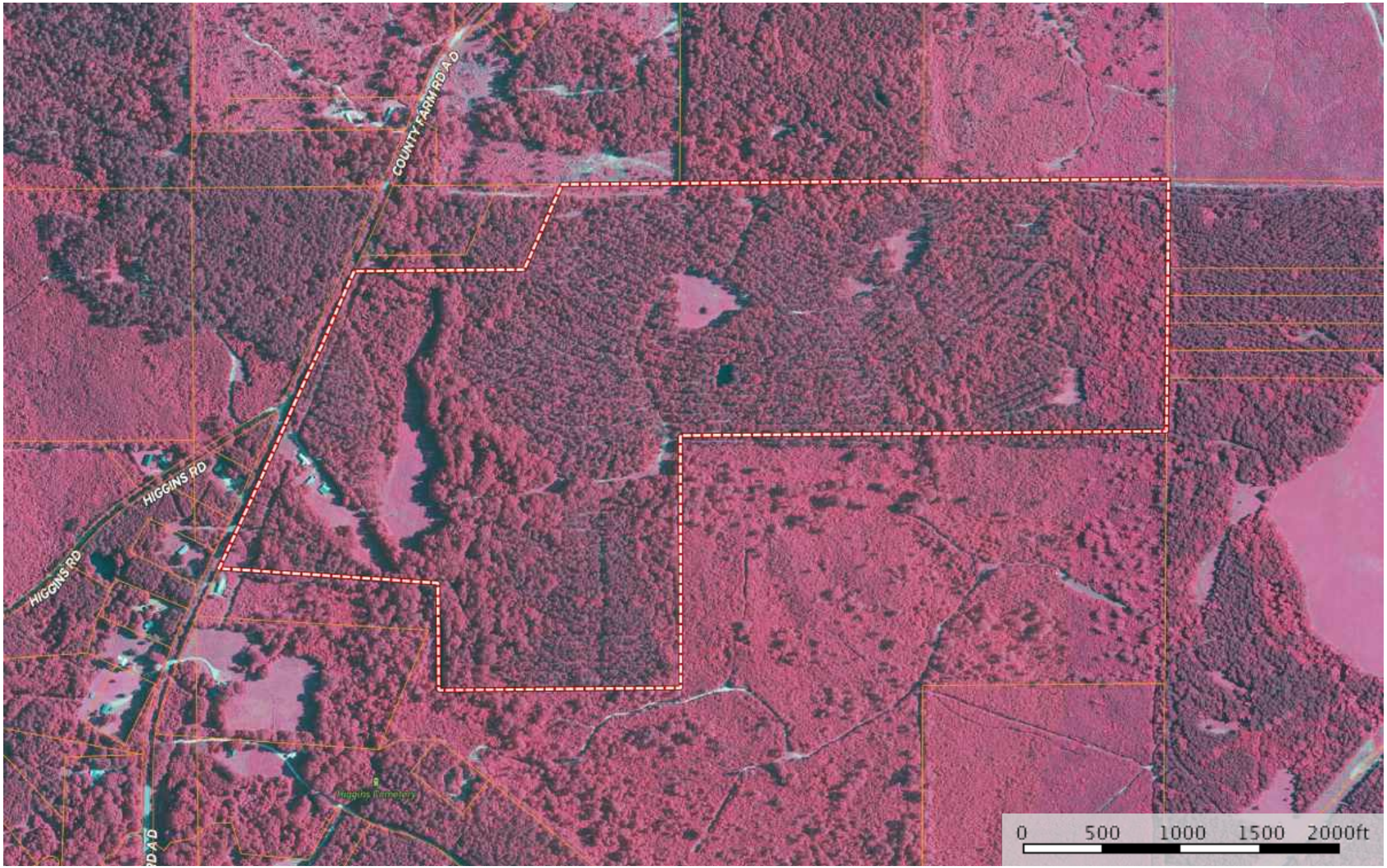
-  Boundary
-  Stream, Intermittent
-  River/Creek
-  Water Body


3834 County Farm Rd
Amite County, Mississippi, 191 AC +/-

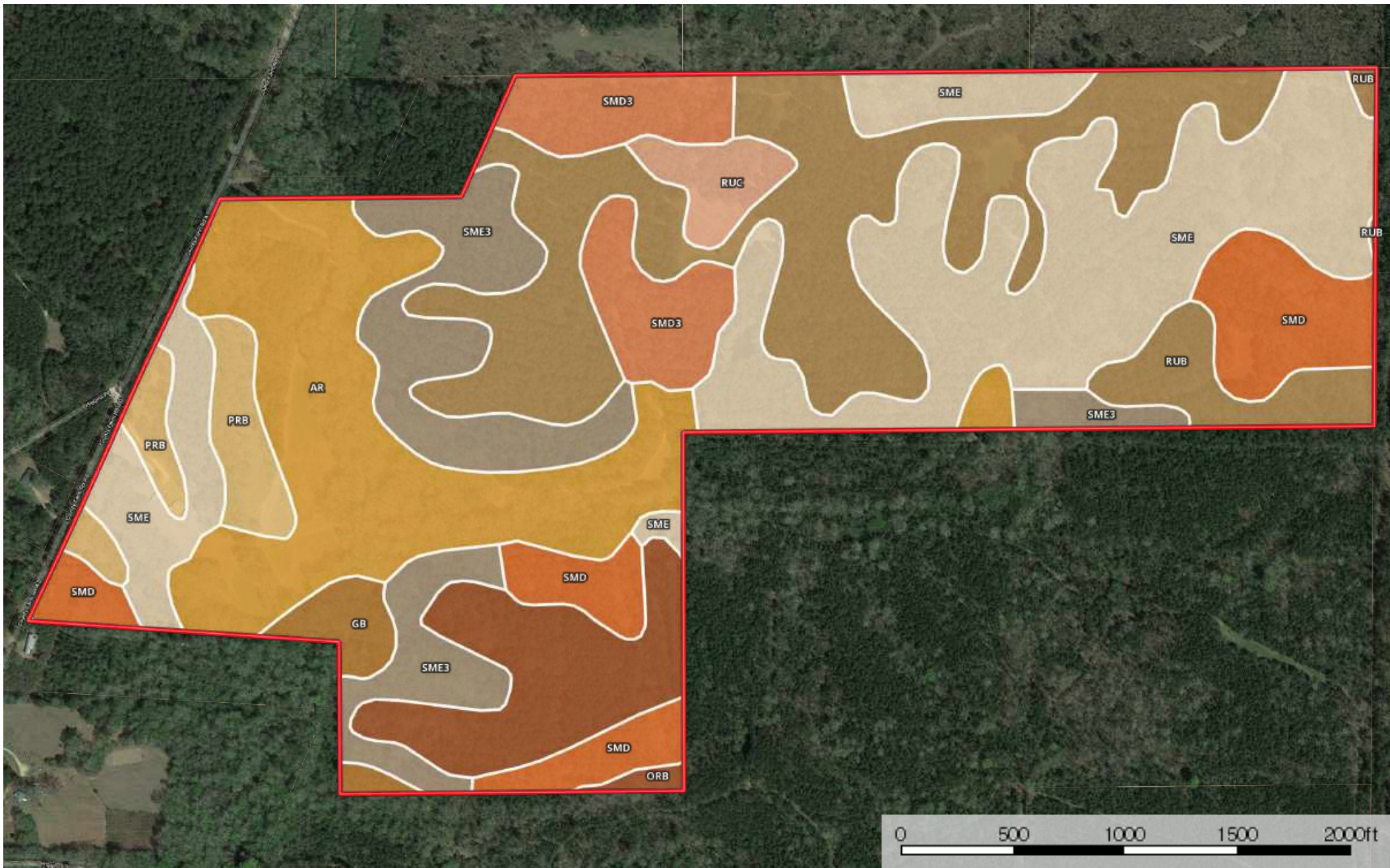



 Boundary

3834 County Farm Rd
Amite County, Mississippi, 191 AC +/-



 Boundary



 Boundary

Boundary 191.3 ac

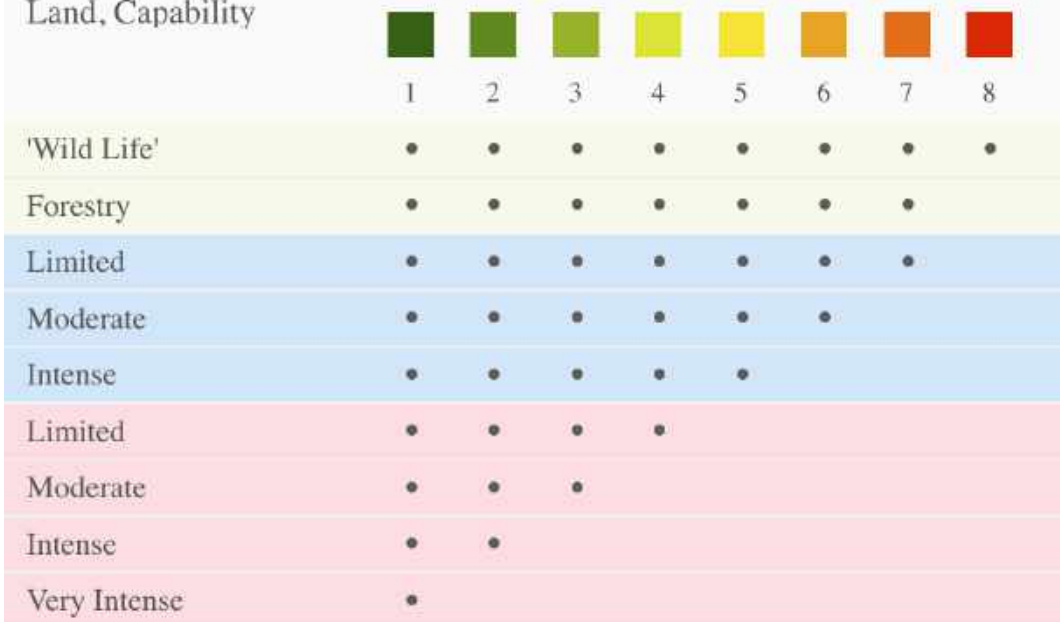
SOIL CODE	SOIL DESCRIPTION	ACRES	%	CAP
RuB	Ruston sandy loam, 2 to 5 percent slopes	41.5	21.68	3e
SmD	Smithdale sandy loam, 8 to 12 percent slopes	14.9	7.77	4e
SmE	Smithdale sandy loam, 12 to 35 percent slopes	45.9	24.02	7e
Ar	Ariel silt loam, 0 to 2 percent slopes, occasionally flooded	31.7	16.6	2w
OrB	Ora loam, 2 to 5 percent slopes	13.1	6.87	2e
SmE3	Smithdale sandy loam, 12 to 35 percent slopes, severely eroded	19.7	10.27	7e
RuC	Ruston sandy loam, 5 to 8 percent slopes	3.4	1.78	3e
SmD3	Smithdale sandy loam, 8 to 12 percent slopes, severely eroded	11.2	5.87	6e
PrB	Providence silt loam, 2 to 5 percent slopes	6.7	3.49	2e
Gb	Gillsburg silt loam, 0 to 2 percent slopes, occasionally flooded	3.2	1.65	2w
TOTALS		191.3	100%	4.34

Capability Legend

Increased Limitations and Hazards

Decreased Adaptability and Freedom of Choice Users

Land, Capability



Grazing Cultivation

(c) climatic limitations (e) susceptibility to erosion

(s) soil limitations within the rooting zone (w) excess of water