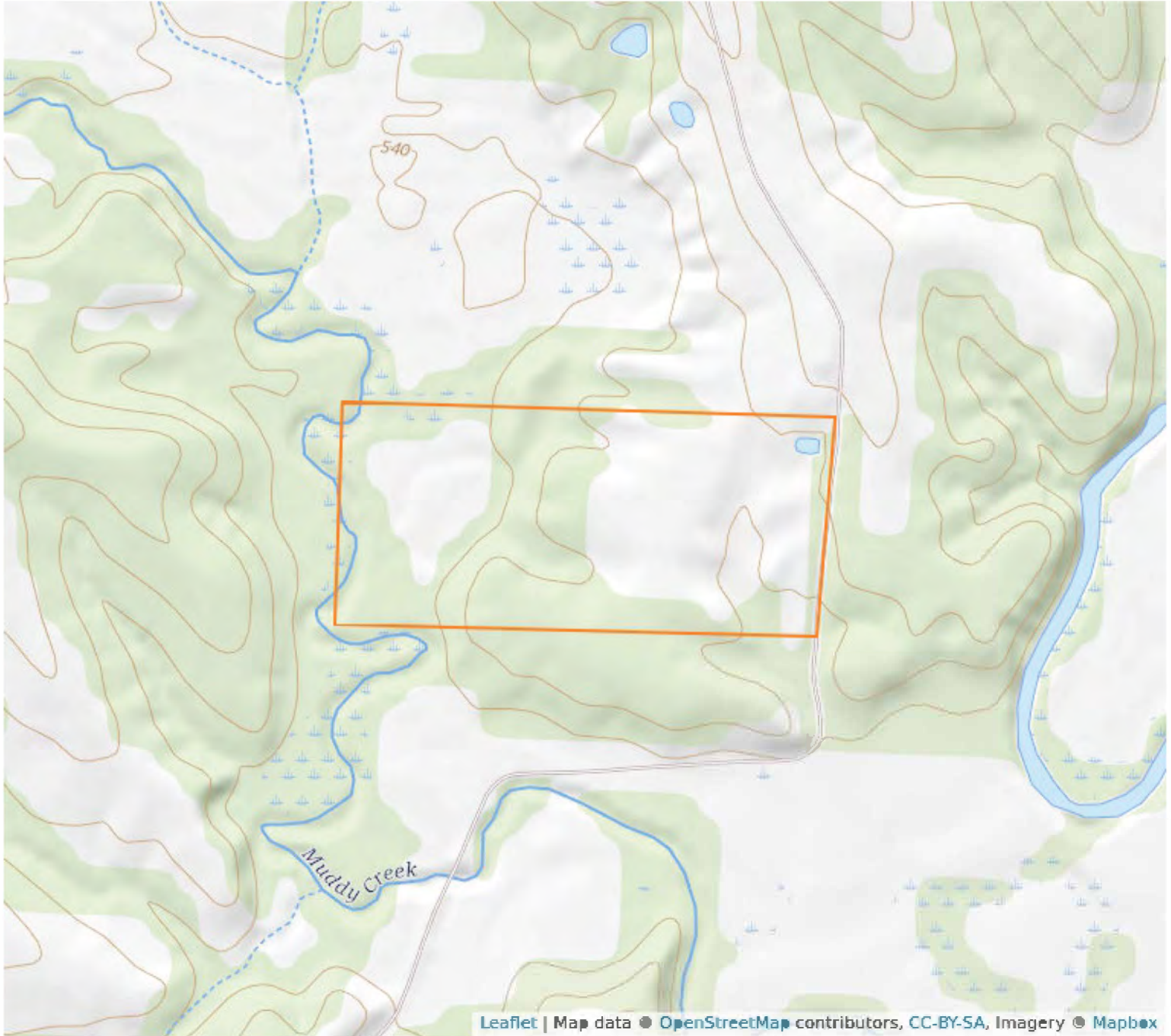


Aerial Map



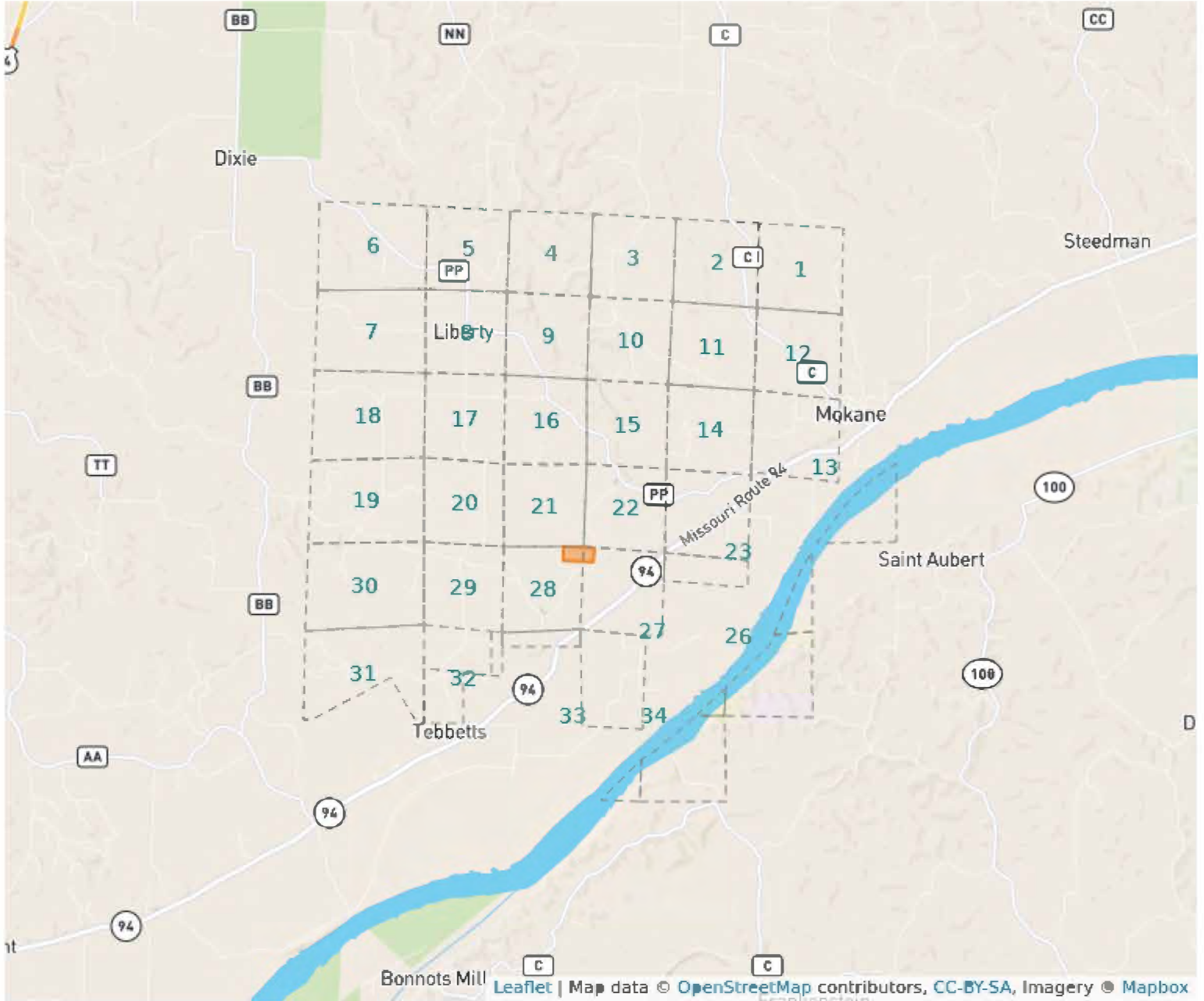
28 - 45N - 9W
Callaway County, Missouri
38°39'3.559" N, 91°56'2.192" W

Topography Map



28 - 45N - 9W
Callaway County, Missouri
38°39'3.559" N, 91°56'2.192" W

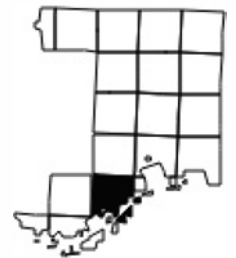
Plat Map



28 - 45N - 9W

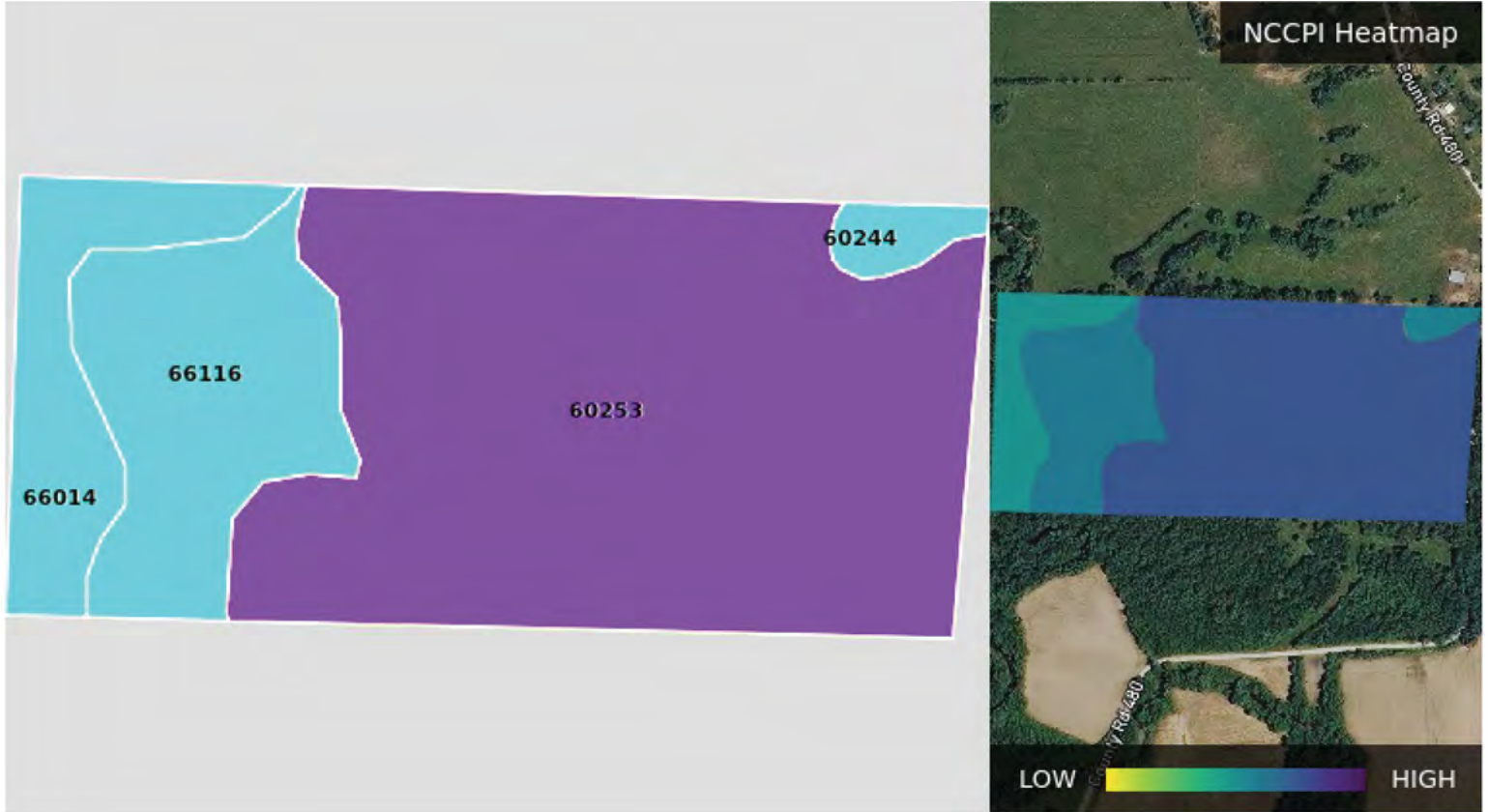
Callaway County, Missouri

38°39'3.559" N, 91°56'2.192" W



Soil Map – Total Acres

Source: NRCS SSURGO



Code	Description	Acres	% of Field	Soil Class	NCCPI
60253	Winfield silt loam, bench	27.06	68%	6	77.22
66116	Haymond silt loam, 0 to 2% slopes	7.42	18.6%	3	67.32
66014	Haymond silt loam, 0 to 3% slopes	4.49	11.3%	3	60.3
60244	Winfield silt loam, 5 to 10% slopes	0.81	2%	3	64.5
		38.78			71.14