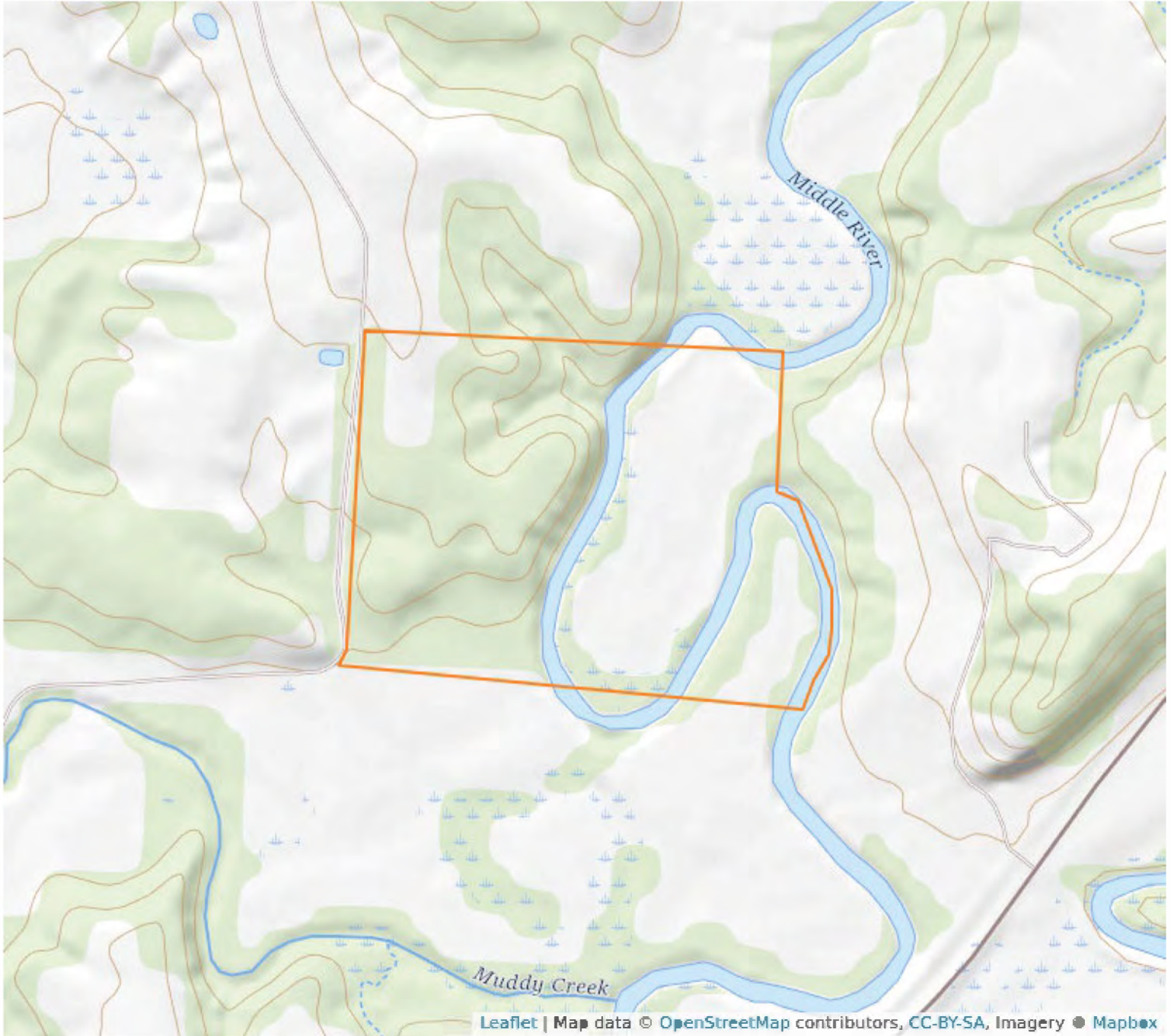


Aerial Map



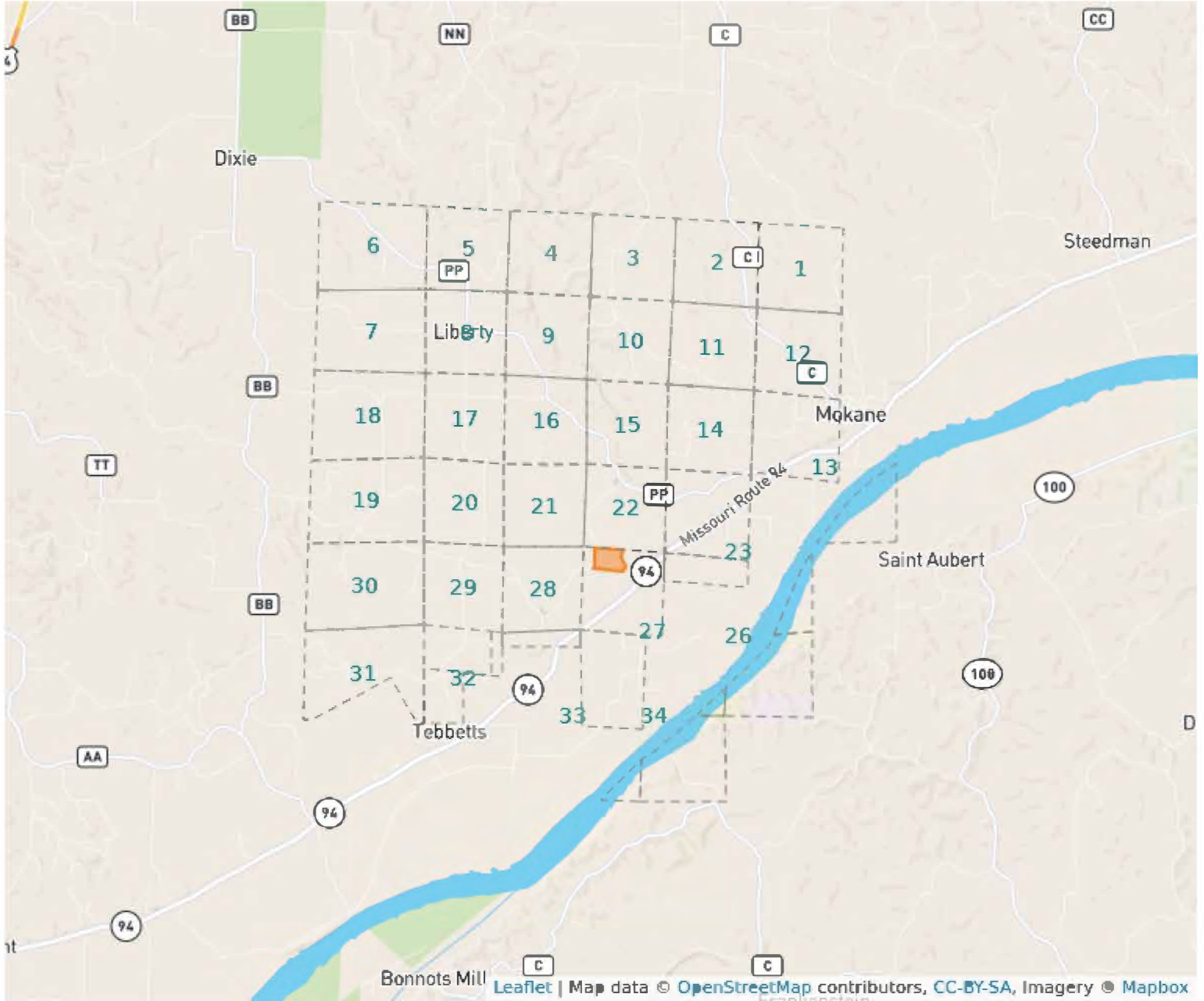
27 - 45N - 9W
Callaway County, Missouri
38°39'0.015" N, 91°55'38.05" W

Topography Map

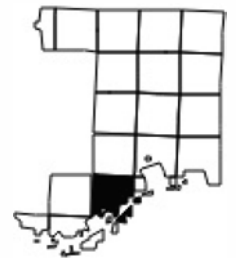


27 - 45N - 9W
Callaway County, Missouri
38°39'0.015" N, 91°55'38.05" W

Plat Map

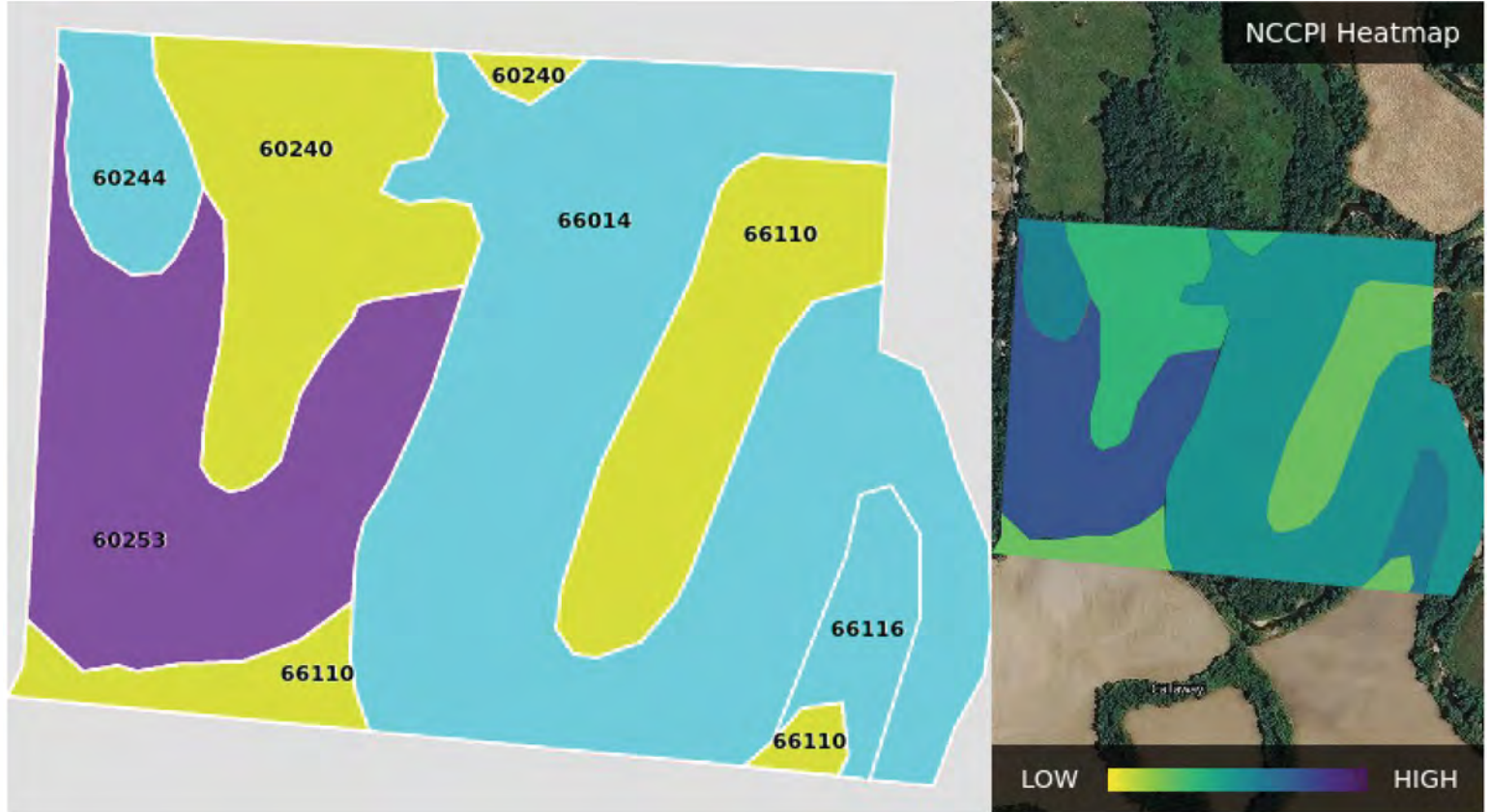


27 - 45N - 9W
Callaway County, Missouri
38°39'0.015" N, 91°55'38.05" W



Soil Map – Total Acres

Source: NRCS SSURGO



Code	Description	Acres	% of Field	Soil Class	NCCPI
66014	Haymond silt loam, 0 to 3% slopes	25.13	43.8%	3	60.3
60253	Winfield silt loam, bench	11.44	19.9%	6	77.22
66110	SansDessein silty clay, 0 to 2% slopes	8.65	15.1%	3	41.58
60240	Winfield silt loam, 14 to 20% slopes	7.86	13.7%	5	49.05
60244	Winfield silt loam, 5 to 10% slopes	2.35	4.1%	3	64.5
66116	Haymond silt loam, 0 to 2% slopes	1.94	3.4%	3	67.32
		57.27			59.71