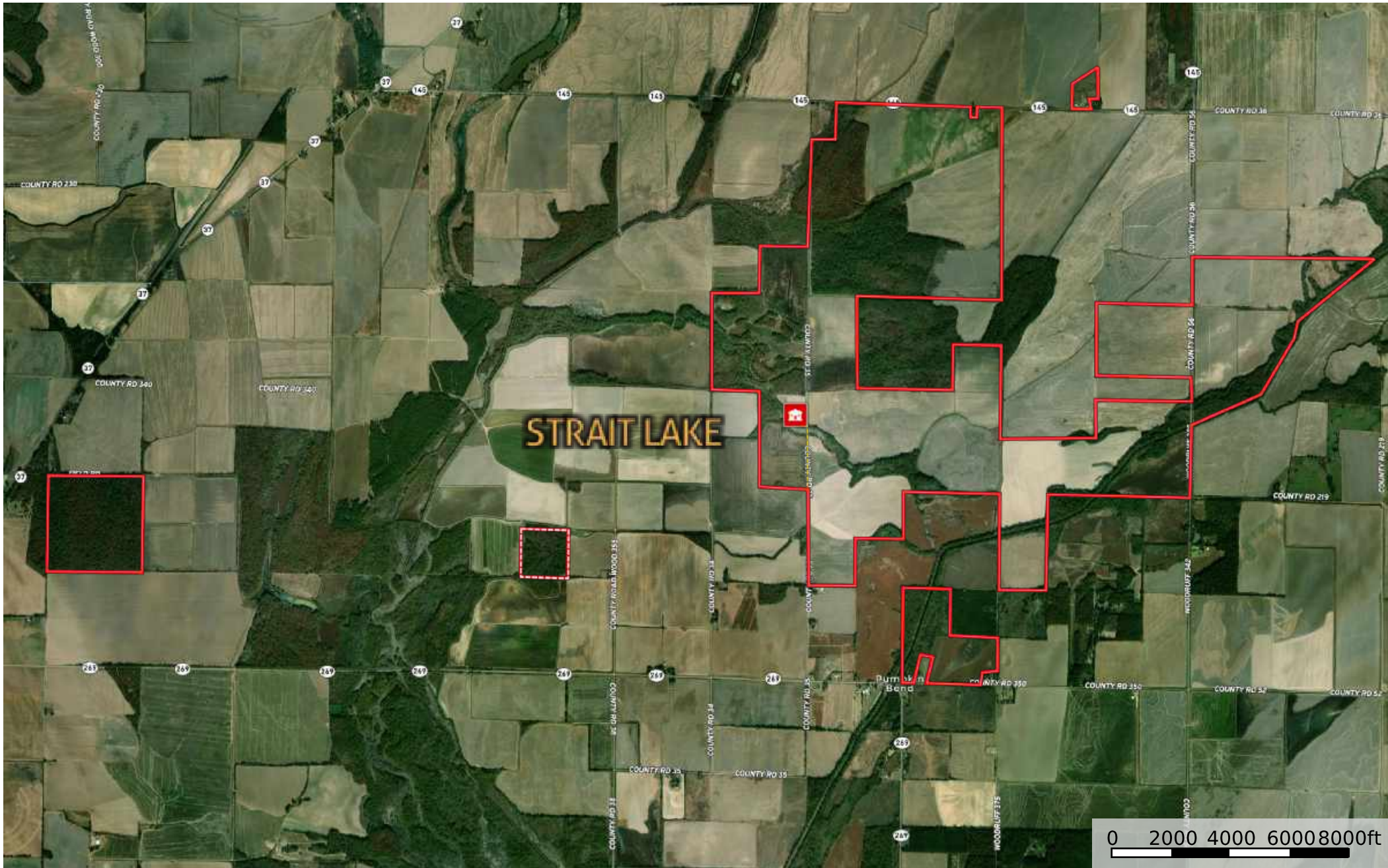
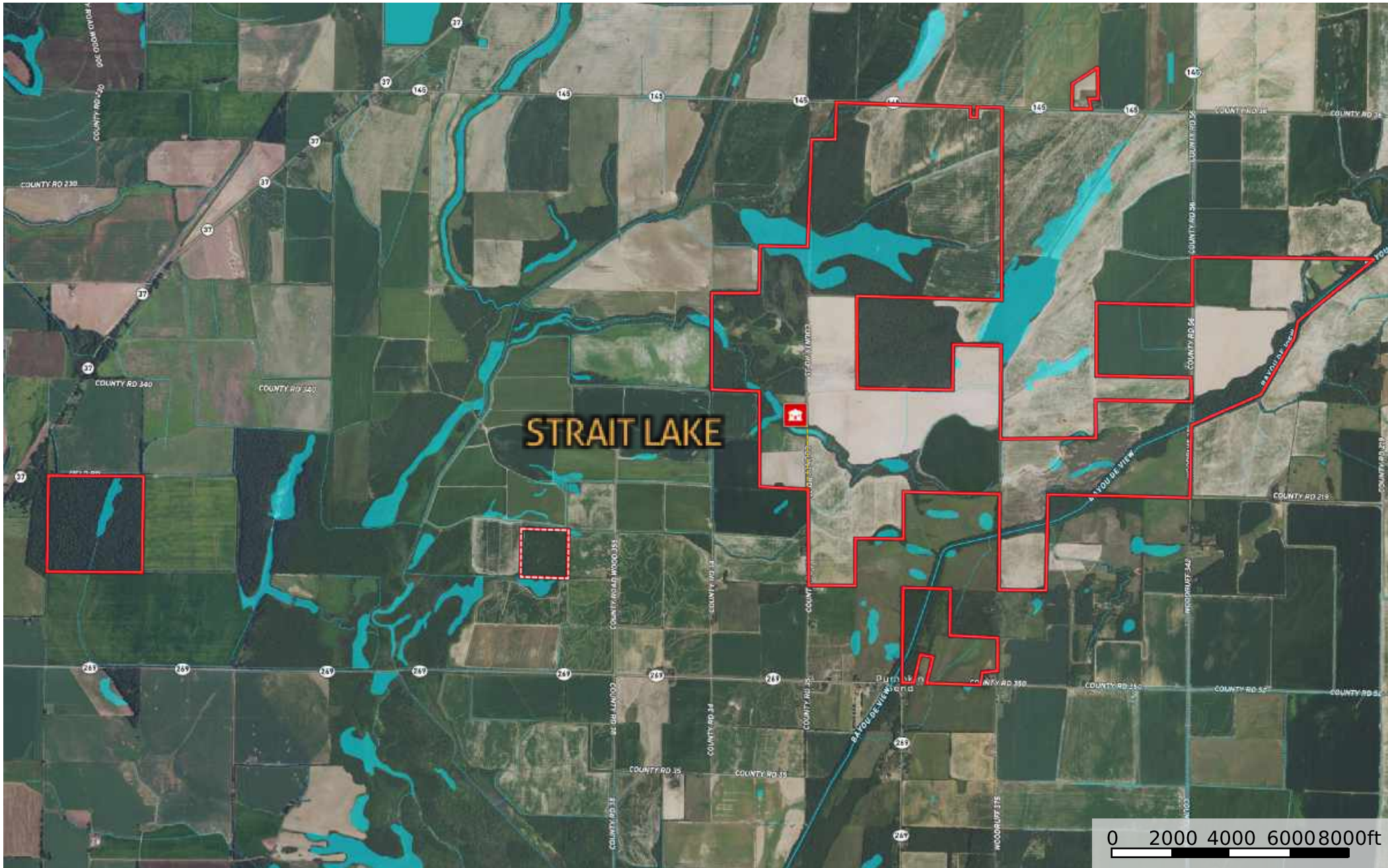


Boundary Boundary



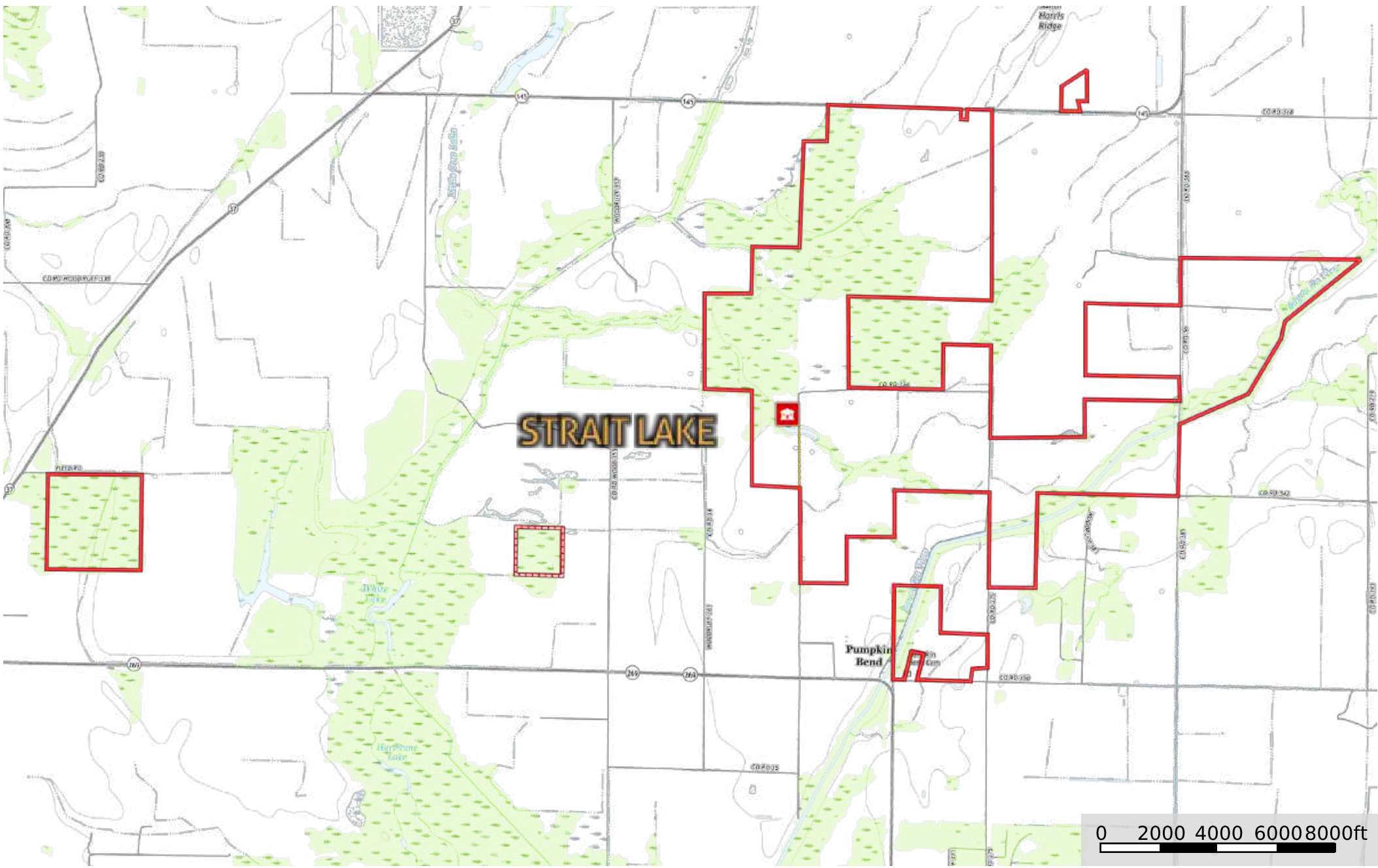
- Main Lodge
- Boundary
- Boundary
- Road / Trail



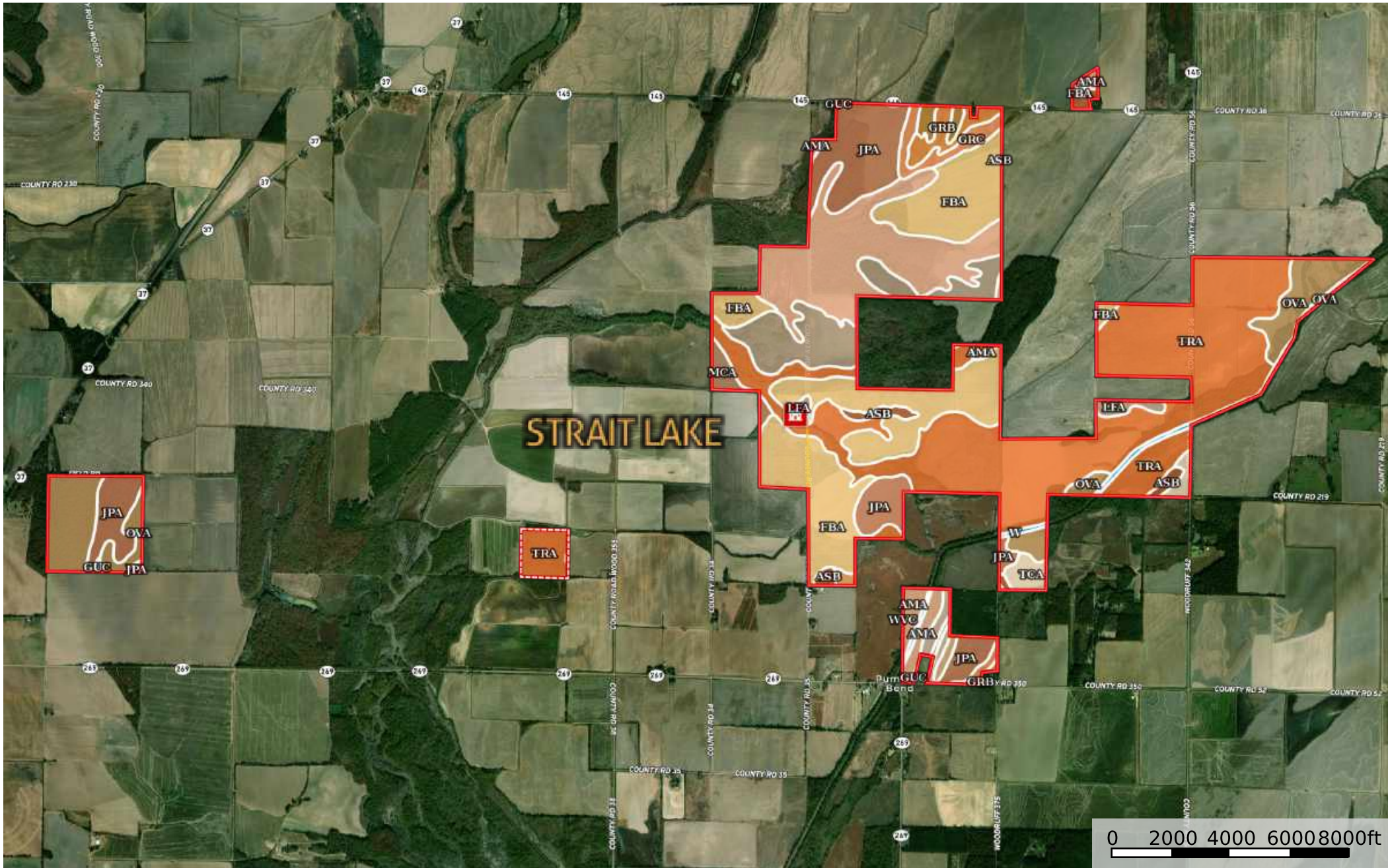
- Main Lodge
- Boundary
- Boundary
- Road / Trail
- Stream, Intermittent
- River/Creek
- Water Body

STRAIT LAKE

Arkansas, AC +/-



- Main Lodge
- Boundary
- Boundary
- Road/Trail



-  Main Lodge
-  Boundary
-  Boundary
-  Road / Trail

|  All Polygons 2571.2 ac

SOIL CODE	SOIL DESCRIPTION	ACRES	%	CAP
OvA	Overcup silt loam, 0 to 1 percent slopes	202.1	7.86	3w
TrA	Tuckerman loam, 0 to 1 percent slopes, frequently flooded	836.1	32.52	4w
TcA	Tichnor silt loam, 0 to 1 percent slopes, frequently flooded	32.7	1.27	4w
W	Water	25.0	0.97	-
AsB	Askew fine sandy loam, 1 to 3 percent slopes	33.3	1.3	2e
LfA	Lafe silt loam, 0 to 1 percent slopes	174.0	6.77	6s
AmA	Amagon silt loam, 0 to 1 percent slopes	348.7	13.56	3w
GrC	Grenada silt loam, 3 to 8 percent slopes, eroded	44.2	1.72	3e
FbA	Foley-Bonn complex, 0 to 1 percent slopes	502.5	19.54	3w
CaA	Calhoun silt loam, 0 to 1 percent slopes	15.8	0.61	3w
JpA	Jackport silty clay loam, 0 to 1 percent slopes	263.3	10.24	3w
GrB	Grenada silt loam, 1 to 3 percent slopes	36.1	1.41	2e
WvB	Wiville fine sandy loam, 1 to 3 percent slopes	5.1	0.2	2e
McA	McCrorry fine sandy loam, 0 to 1 percent slopes	21.3	0.83	3w
GuC	Grubbs silt loam, 3 to 8 percent slopes, eroded	20.8	0.81	3e
GuB	Grubbs silt loam, 1 to 3 percent slopes	10.3	0.4	2e
WvC	Wiville fine sandy loam, 3 to 8 percent slopes	0.0	0.0	3e
TOTALS		2571.2	100%	3.48

|  Boundary 2249.8 ac

SOIL CODE	SOIL DESCRIPTION	ACRES	%	CAP
OvA	Overcup silt loam, 0 to 1 percent slopes	100.2	4.45	3w
TrA	Tuckerman loam, 0 to 1 percent slopes, frequently flooded	797.1	35.43	4w
TcA	Tichnor silt loam, 0 to 1 percent slopes, frequently flooded	32.7	1.45	4w
W	Water	20.6	0.91	-
AsB	Askew fine sandy loam, 1 to 3 percent slopes	27.6	1.23	2e
LfA	Lafe silt loam, 0 to 1 percent slopes	174.0	7.73	6s
AmA	Amagon silt loam, 0 to 1 percent slopes	306.2	13.61	3w
GrC	Grenada silt loam, 3 to 8 percent slopes, eroded	36.6	1.63	3e
FbA	Foley-Bonn complex, 0 to 1 percent slopes	499.5	22.2	3w
CaA	Calhoun silt loam, 0 to 1 percent slopes	15.8	0.7	3w
JpA	Jackport silty clay loam, 0 to 1 percent slopes	178.5	7.94	3w
GrB	Grenada silt loam, 1 to 3 percent slopes	34.7	1.54	2e

WvB	Wiville fine sandy loam, 1 to 3 percent slopes	4.9	0.22	2e
McA	McCrary fine sandy loam, 0 to 1 percent slopes	21.3	0.94	3w
GuC	Grubbs silt loam, 3 to 8 percent slopes, eroded	0.3	0.01	3e
TOTALS		2249.8	100%	3.54

|  Boundary 13.6 ac

SOIL CODE	SOIL DESCRIPTION	ACRES	%	CAP
AsB	Askew fine sandy loam, 1 to 3 percent slopes	5.7	42.17	2e
AmA	Amagon silt loam, 0 to 1 percent slopes	4.8	35.49	3w
FbA	Foley-Bonn complex, 0 to 1 percent slopes	3.0	22.34	3w
TOTALS		13.6	100%	2.58

|  Boundary 108.8 ac

SOIL CODE	SOIL DESCRIPTION	ACRES	%	CAP
GrC	Grenada silt loam, 3 to 8 percent slopes, eroded	7.5	6.91	3e
W	Water	4.5	4.1	-
GrB	Grenada silt loam, 1 to 3 percent slopes	1.4	1.3	2e
GuB	Grubbs silt loam, 1 to 3 percent slopes	10.3	9.47	2e
JpA	Jackport silty clay loam, 0 to 1 percent slopes	28.4	26.07	3w
GuC	Grubbs silt loam, 3 to 8 percent slopes, eroded	19.1	17.57	3e
AmA	Amagon silt loam, 0 to 1 percent slopes	37.6	34.59	3w
WvC	Wiville fine sandy loam, 3 to 8 percent slopes	0.0	0.0	3e
TOTALS		108.8	100%	2.77

|  Boundary 39.3 ac

SOIL CODE	SOIL DESCRIPTION	ACRES	%	CAP
WvB	Wiville fine sandy loam, 1 to 3 percent slopes	0.3	0.65	2e
TrA	Tuckerman loam, 0 to 1 percent slopes, frequently flooded	39.0	99.35	4w
TOTALS		39.3	100%	3.99

|  Boundary 159.7 ac

SOIL CODE	SOIL DESCRIPTION	ACRES	%	CAP
JpA	Jackport silty clay loam, 0 to 1 percent slopes	56.4	35.3	3w
GuC	Grubbs silt loam, 3 to 8 percent slopes, eroded	1.4	0.88	3e
OvA	Overcup silt loam, 0 to 1 percent slopes	101.9	63.82	3w





TOTALS		159.7	100%	3.0
--------	--	-------	------	-----

Capability Legend

Increased Limitations and Hazards

Decreased Adaptability and Freedom of Choice Users

Land, Capability

								
	1	2	3	4	5	6	7	8
'Wild Life'	•	•	•	•	•	•	•	•
Forestry	•	•	•	•	•	•	•	
Limited	•	•	•	•	•	•	•	
Moderate	•	•	•	•	•	•		
Intense	•	•	•	•	•			
Limited	•	•	•	•				
Moderate	•	•	•					
Intense	•	•						
Very Intense	•							

Grazing Cultivation

(c) climatic limitations (e) susceptibility to erosion

(s) soil limitations within the rooting zone (w) excess of water