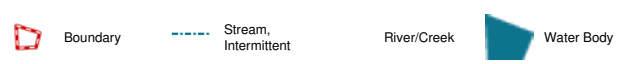
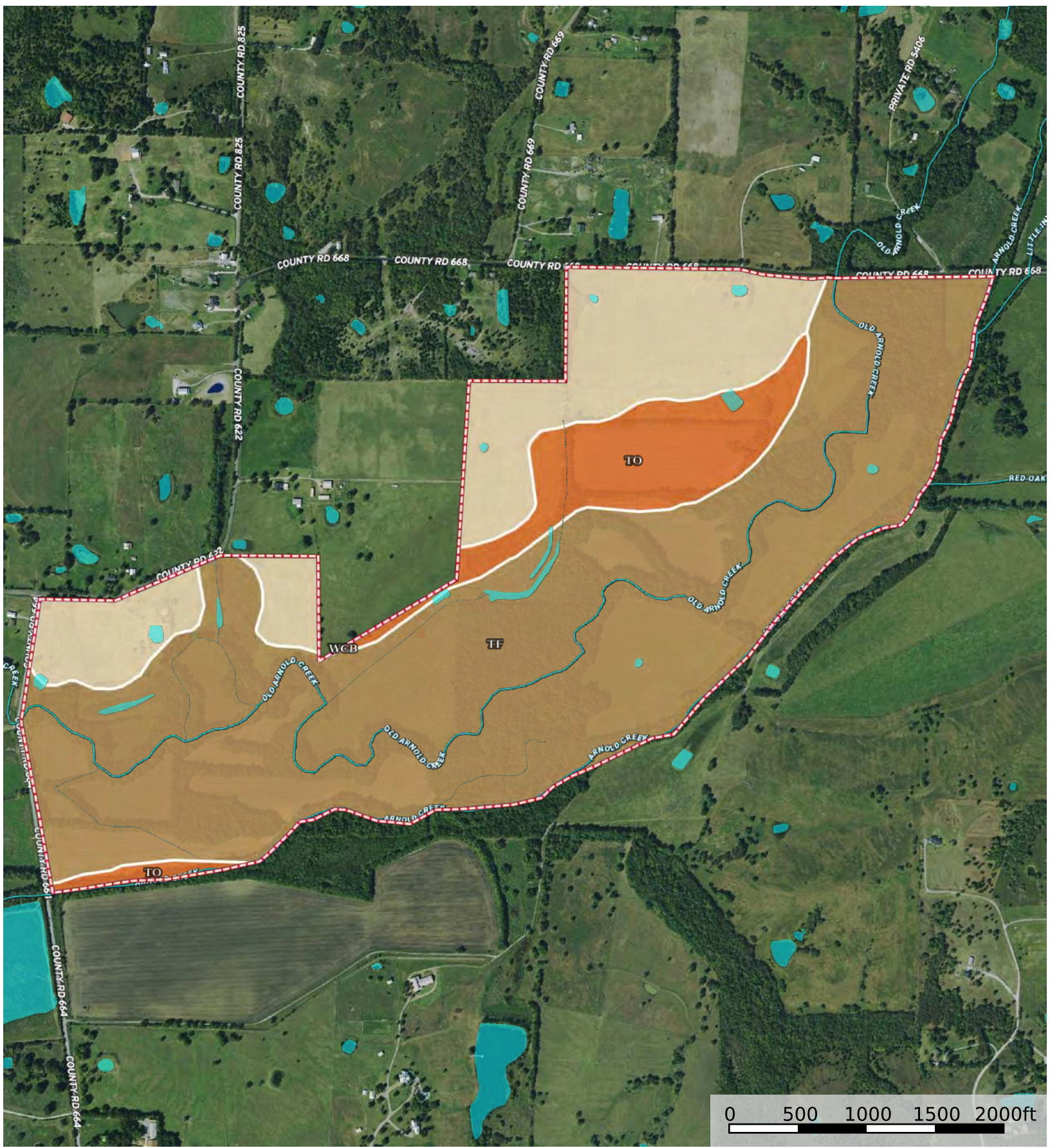


Lone Oak North

Collin County, Texas, 364 AC +/-



|  Boundary 363.25 ac

SOIL CODE	SOIL DESCRIPTION	ACRES	%	CPI	NCCPI	CAP
Tf	Tinn clay, 0 to 1 percent slopes, frequently flooded	250.25	68.89	0	46	5w
WcB	Wilson clay loam, 1 to 3 percent slopes	74.85	20.61	0	49	3w
To	Trinity clay, 0 to 1 percent slopes, occasionally flooded	38.15	10.5	0	54	4w
TOTALS		363.25(*)	100%	-	47.46	4.48

(*) Total acres may differ in the second decimal compared to the sum of each acreage soil. This is due to a round error because we only show the acres of each soil with two decimal.

