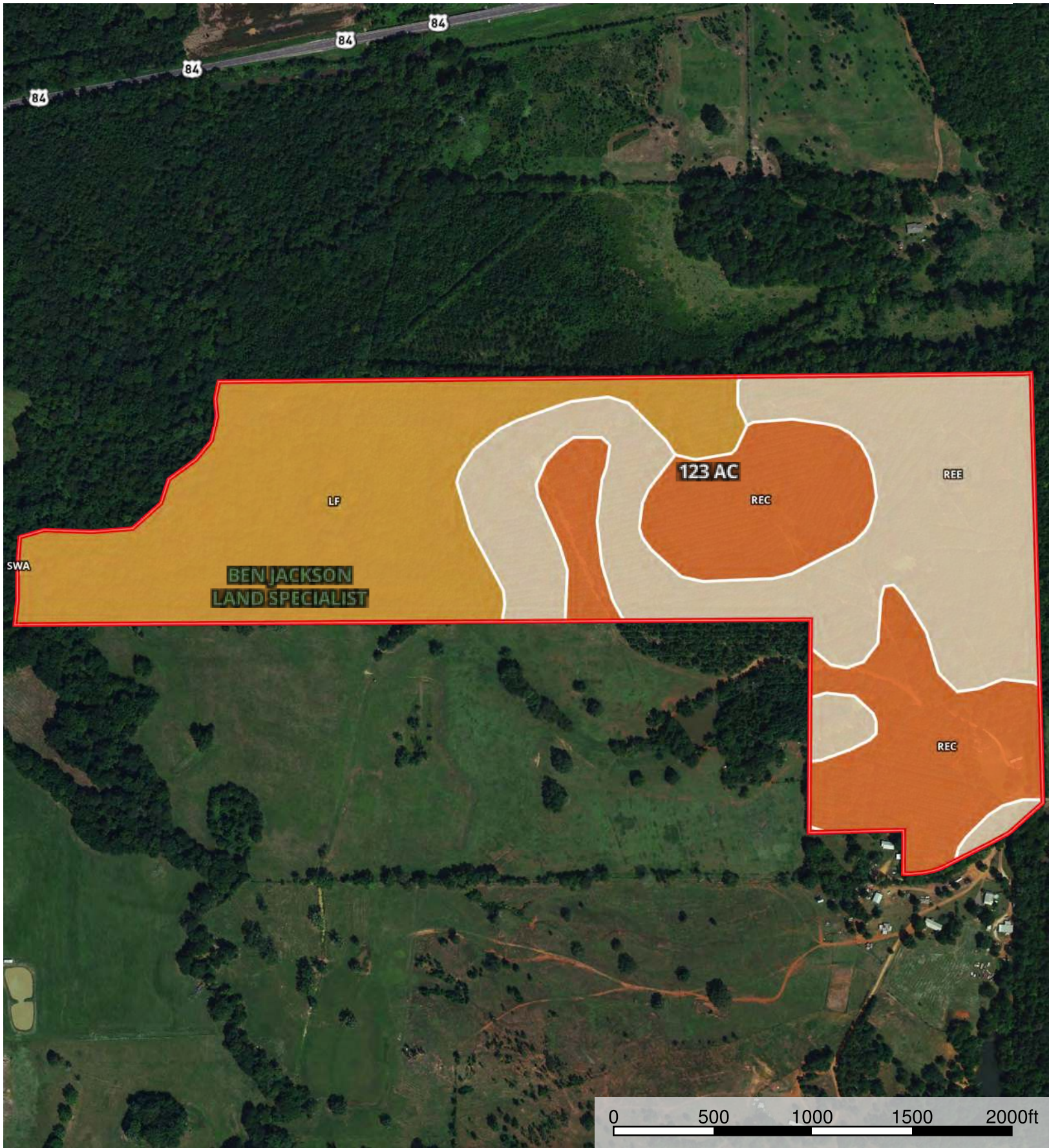



Mt Enterprise 123 acres
Rusk County, Texas, 123 AC +/-



 Boundary

Boundary 114.6 ac

SOIL CODE	SOIL DESCRIPTION	ACRES	%	CAP
SwA	Sawlit-Sawtown complex, 0 to 2 percent slopes	0.0	0.01	2e
ReC	Redsprings gravelly fine sandy loam, 2 to 5 percent slopes	31.4	27.43	3e
ReE	Redsprings gravelly fine sandy loam, 5 to 15 percent slopes	41.7	36.41	6e
Lf	Laneville loam, 0 to 1 percent slopes, frequently flooded	41.4	36.14	5w
TOTALS		114.6	100%	4.82

Capability Legend

Increased Limitations and Hazards

Decreased Adaptability and Freedom of Choice Users

Land, Capability

	1	2	3	4	5	6	7	8
'Wild Life'	•	•	•	•	•	•	•	•
Forestry	•	•	•	•	•	•	•	
Limited	•	•	•	•	•	•	•	
Moderate	•	•	•	•	•	•		
Intense	•	•	•	•	•			
Limited	•	•	•	•				
Moderate	•	•	•					
Intense	•	•						
Very Intense	•							

Grazing Cultivation

(c) climatic limitations (e) susceptibility to erosion

(s) soil limitations within the rooting zone (w) excess of water