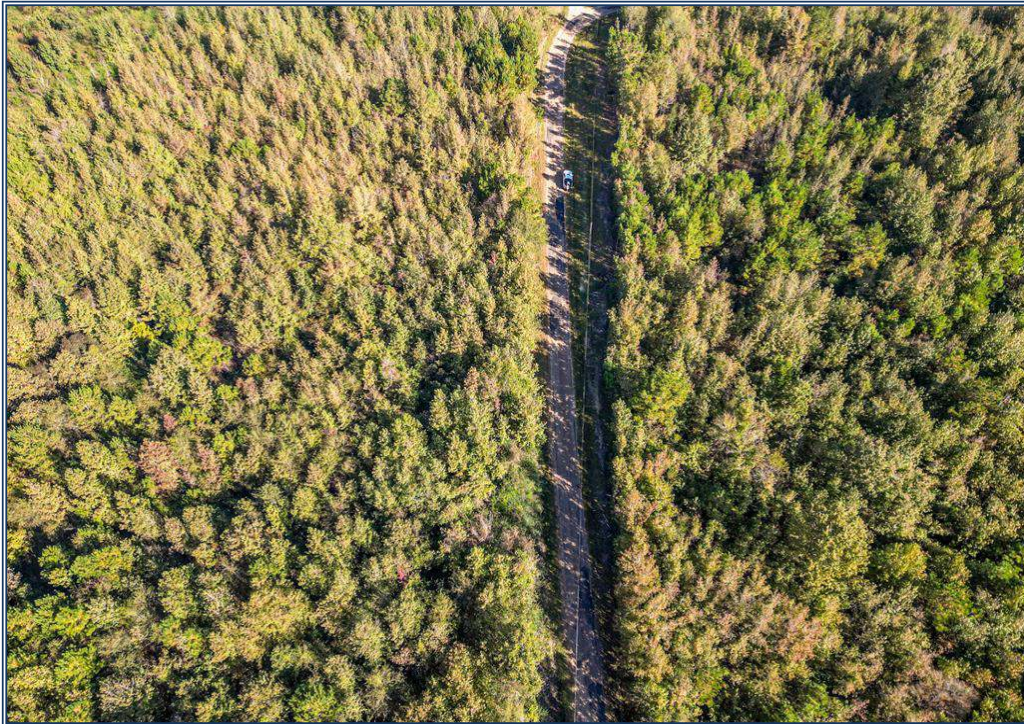




SOUTHERN STATES REALTY



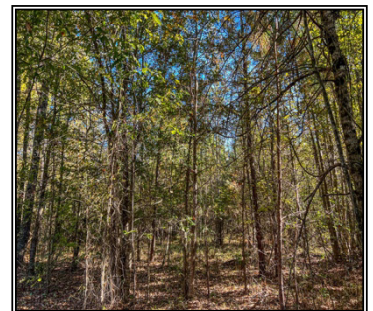
Land for sale in Copiah County, MS. This +/- 38 acres is the perfect raw recreational/hunting property for you to take control yourself and get exactly what you want out of a property. This tract already has the essentials, road frontage, power/water and is a short drive from shopping, feed stores and other necessities for you and your family. The property is less than a mile from the Yazoo River allowing for great deer and turkey hunting every year. This property allows for you to put your own spin on things and completely turn this into your dream property. With all of the basics already in place, a little dozer work and personal TLC this place is ready to go. Being that it is also priced to sell, you are getting a great tract at an even better price. If you want a property that you can let your imagination take over and create your own outdoor paradise, this is the tract for you. Call us today to schedule your private showing of this tract.

32.005273, -90.242634 GPS

1016 Lomax Lane, Crystal Springs, MS



- Land for Sale Copiah Co, MS
- Property for Sale South MS
- Deer and Turkey Hunting
- Less than Hour from Jackson
- Raw Hunting Recreational Land
- 2000 ft. Road Frontage
- Power and Water Available
- Large Surrounding Landowners



38 Acres

MLS #137301

UC #23042-37301

\$106,400



Ryan Drew

rdrew18@outlook.com

Office: (601) 250-0017

Cell: (601) 594-2279

SouthernStatesRealty.com



Slade Priest

Sladepriest1@gmail.com

Office: (601) 250-0017

Cell: (601) 888-0094

SouthernStatesRealty.com