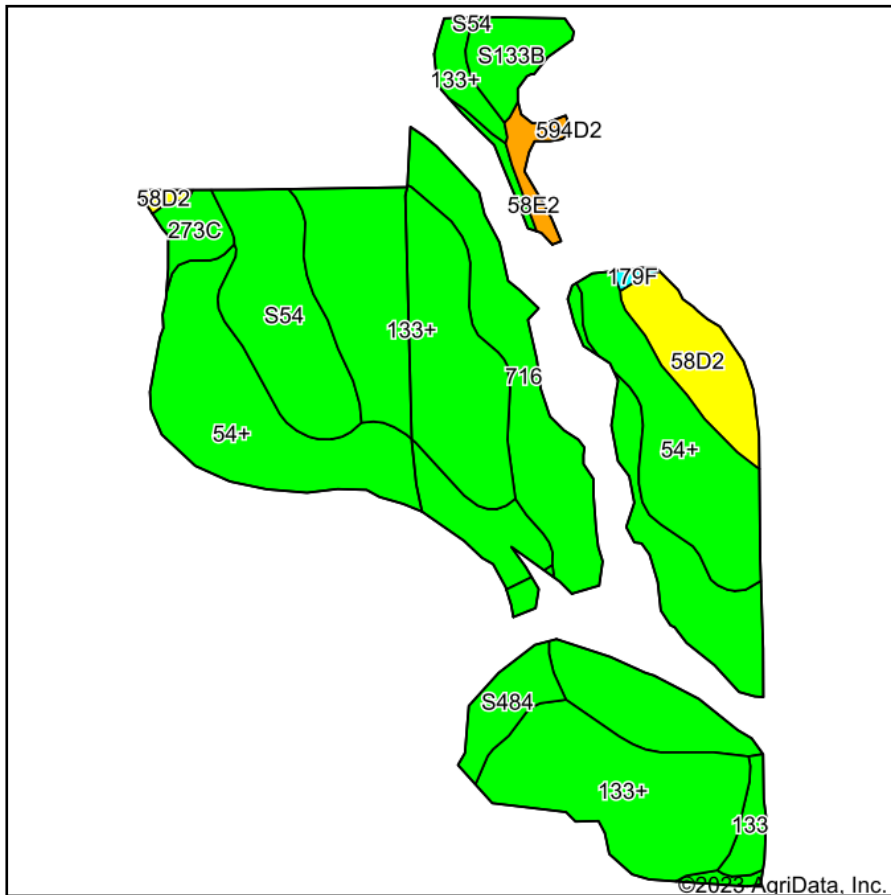
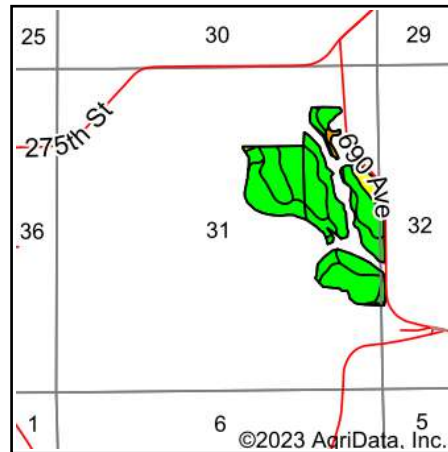


Soils Map



Soils data provided by USDA and NRCS.



State: **Iowa**
 County: **Monroe**
 Location: **31-71N-16W**
 Township: **Urbana**
 Acres: **76.59**
 Date: **1/27/2023**

Hawkeye Farm Mgmt & Real Estate

United Country Real Estate
 22 N Main, Albia IA Phone: 562-952-7796
 Cr:rl: hawkeye@hcr.com
 Cr:rl: 1-800-669-1000
 www.iowawhitehillfarms.com

Maps Provided By:

surety
 CUSTOMIZED ONLINE MAPPING
 © AgriData, Inc. 2021 www.AgriDataInc.com



Area Symbol: IA135, Soil Area Version: 30

Code	Soil Description	Acres	Percent of field	CSR2 Legend	Non-Irr Class *c	CSR2**	CSR	*n NCCPI Soybeans	
133+	Colo silt loam, overwash, 0 to 2 percent slopes	23.52	30.7%		Ilw	78	80	87	
54+	Zook silt loam, heavy till, 0 to 2 percent slopes, occasionally flooded, overwash	18.51	24.2%		Ilw	68	70	73	
716	Lawson-Quiver-Nodaway complex, 0 to 2 percent slopes, occasionally flooded	15.95	20.8%		Ilw	78		86	
S54	Zook silty clay loam, heavy till, 0 to 2 percent slopes, occasionally flooded	6.98	9.1%		Ilw	68		68	
58D2	Douds loam, heavy loess, 9 to 14 percent slopes, moderately eroded	3.87	5.1%		Ive	44	28	63	
S484	Lawson silt loam, heavy till, 0 to 2 percent slopes, occasionally flooded	2.23	2.9%		Ilw	86		93	
S133B	Colo silty clay loam, heavy till, 2 to 5 percent slopes, rarely flooded	2.08	2.7%		Ilw	80		83	
273C	Olmitz loam, heavy till, 5 to 9 percent slopes	1.34	1.7%		Ille	77	57	71	
58E2	Douds loam, heavy loess, 14 to 18 percent slopes, moderately eroded	0.99	1.3%		Vle	34	18	57	
133	Colo silty clay loam, heavy till, 0 to 2 percent slopes, occasionally flooded	0.95	1.2%		Ilw	78	85	86	
179F	Gara loam, 18 to 25 percent slopes	0.17	0.2%		Vle	19	15	42	
Weighted Average						2.18	72.5	*-	*n 79.8

**IA has updated the CSR values for each county to CSR2.

*- CSR weighted average cannot be calculated on the current soils data, use prior data version for csr values.

*n: The aggregation method is "Weighted Average using all components"

*c: Using Capabilities Class Dominant Condition Aggregation Method

Soils data provided by USDA and NRCS.