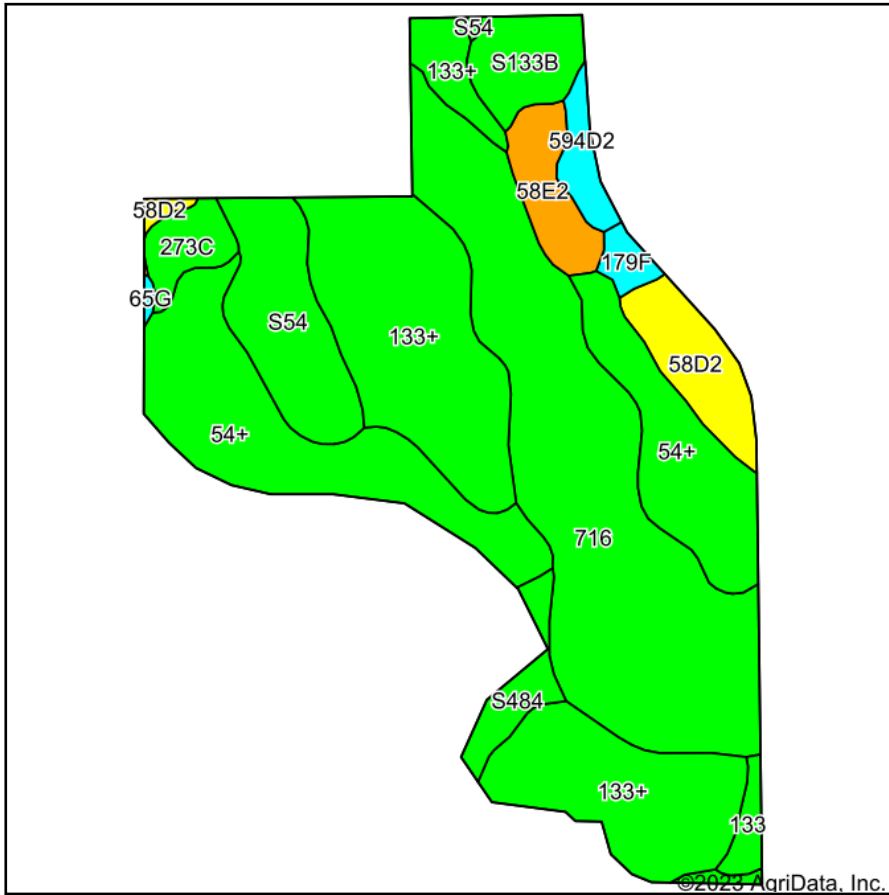
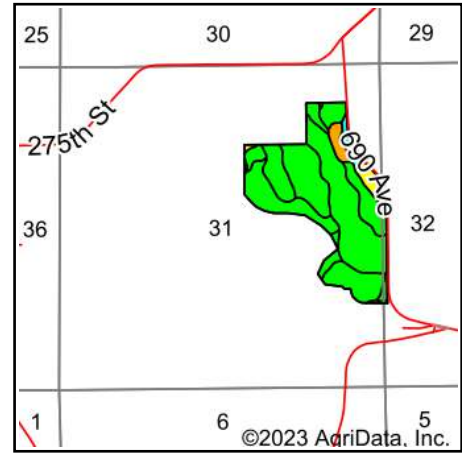


# Soils Map



Soils data provided by USDA and NRCS.



State: **Iowa**  
 County: **Monroe**  
 Location: **31-71N-16W**  
 Township: **Urbana**  
 Acres: **96**  
 Date: **1/27/2023**

**Hawkeye Farm Mgmt & Real Estate**

**United Country Real Estate**  
 22 N Main, Alto IA Phone: 515-952-7796  
 Cell: 515-952-7796  
 Fax: 515-952-7796  
 www.hawkeyefarm.com

Maps Provided By:

**surety**  
 CUSTOMIZED ONLINE MAPPING  
 © AgriData, Inc. 2021 www.AgriDataInc.com



Area Symbol: IA135, Soil Area Version: 30

Code	Soil Description	Acres	Percent of field	CSR2 Legend	Non-Irr Class *c	CSR2**	CSR	*n NCCPI Soybeans	
716	Lawson-Quiver-Nodaway complex, 0 to 2 percent slopes, occasionally flooded	27.80	29.0%		Ilw	78		86	
133+	Colo silt loam, overwash, 0 to 2 percent slopes	24.18	25.2%		Ilw	78	80	87	
54+	Zook silt loam, heavy till, 0 to 2 percent slopes, occasionally flooded, overwash	19.28	20.1%		Ilw	68	70	73	
S54	Zook silty clay loam, heavy till, 0 to 2 percent slopes, occasionally flooded	7.06	7.4%		Ilw	68		68	
58D2	Douds loam, heavy loess, 9 to 14 percent slopes, moderately eroded	4.11	4.3%		IVe	44	28	63	
S133B	Colo silty clay loam, heavy till, 2 to 5 percent slopes, rarely flooded	3.22	3.4%		Ilw	80		83	
58E2	Douds loam, heavy loess, 14 to 18 percent slopes, moderately eroded	2.94	3.1%		Vle	34	18	57	
S484	Lawson silt loam, heavy till, 0 to 2 percent slopes, occasionally flooded	2.01	2.1%		Ilw	86		93	
273C	Olmitz loam, heavy till, 5 to 9 percent slopes	1.97	2.1%		Ille	77	57	71	
594D2	Galland loam, heavy loess, 9 to 14 percent slopes, moderately eroded	1.51	1.6%		IVe	19	5	49	
133	Colo silty clay loam, heavy till, 0 to 2 percent slopes, occasionally flooded	0.92	1.0%		Ilw	78	85	86	
179F	Gara loam, 18 to 25 percent slopes	0.87	0.9%		Vle	19	15	42	
65G	Lindley loam, 18 to 40 percent slopes	0.13	0.1%		Vlle	6	5	12	
<b>Weighted Average</b>						<b>2.30</b>	<b>71.1</b>	<b>*-</b>	<b>*n 79.1</b>

\*\*IA has updated the CSR values for each county to CSR2.

\*- CSR weighted average cannot be calculated on the current soils data, use prior data version for csr values.

\*n: The aggregation method is "Weighted Average using all components"

\*c: Using Capabilities Class Dominant Condition Aggregation Method

Soils data provided by USDA and NRCS.