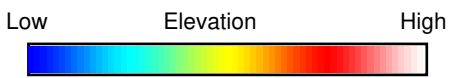
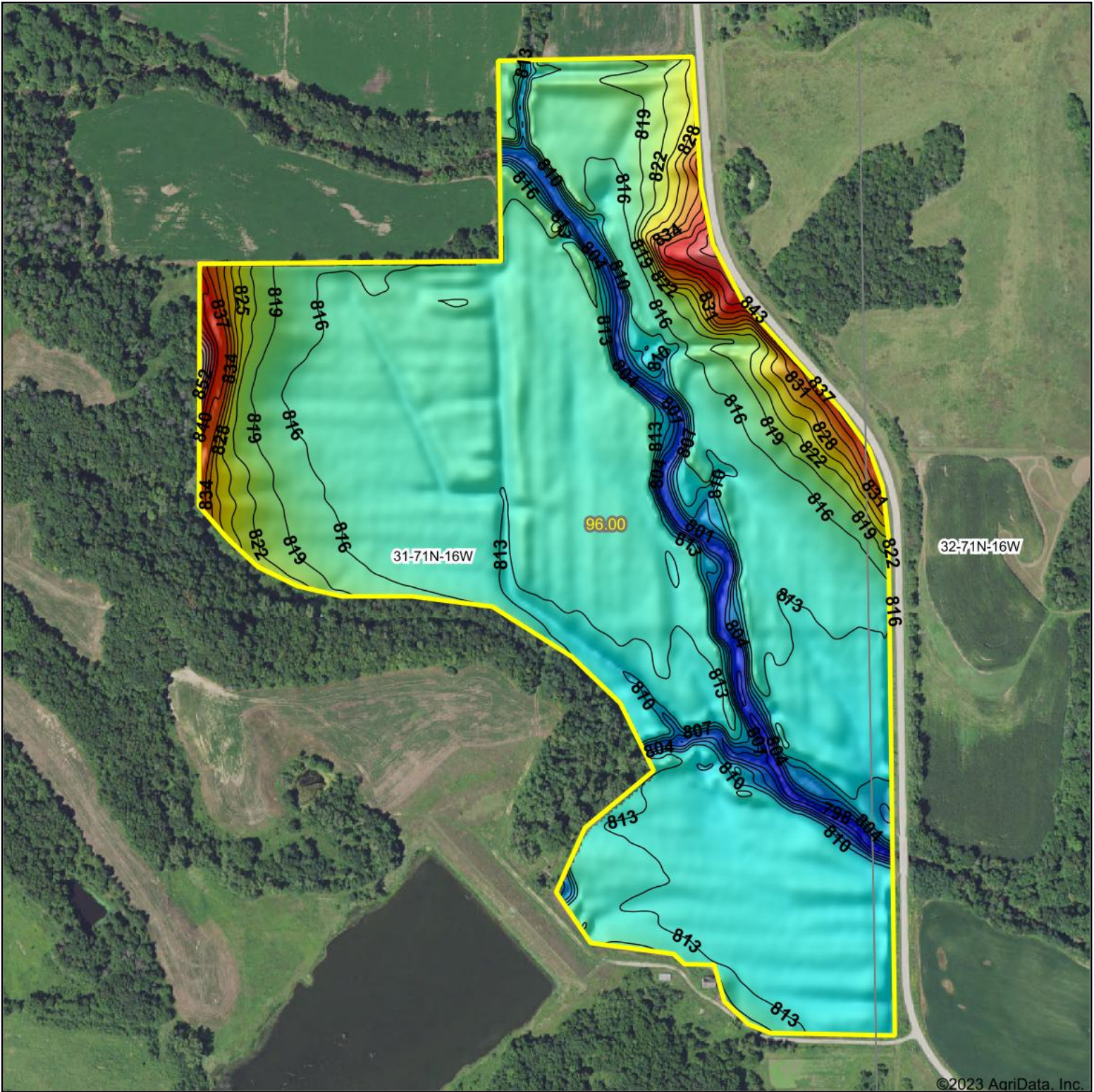


# Topography Hillshade



Source: USGS 3 meter dem

Interval(ft): 3

Min: 796.5

Max: 855.4

Range: 58.9

Average: 815.1

Standard Deviation: 6.5 ft



1/27/2023

**31-71N-16W**  
**Monroe County**  
**Iowa**

map center: 40° 54' 23.04, -92° 44' 22.04

**Hawkeye Farm Mgmt & Real Estate**

**United Country Real Estate**  
22 N Main, Albia IA Phone: 641-933-7796  
Email: hawkeye@ucireia.com  
On the web: www.ucireia.com  
www.lovewhiteriffarms.com

Maps Provided By:

**surety**  
CUSTOMIZED ONLINE MAPPING

© AgriData, Inc. 2021

www.AgriDataInc.com

©2023 AgriData, Inc.