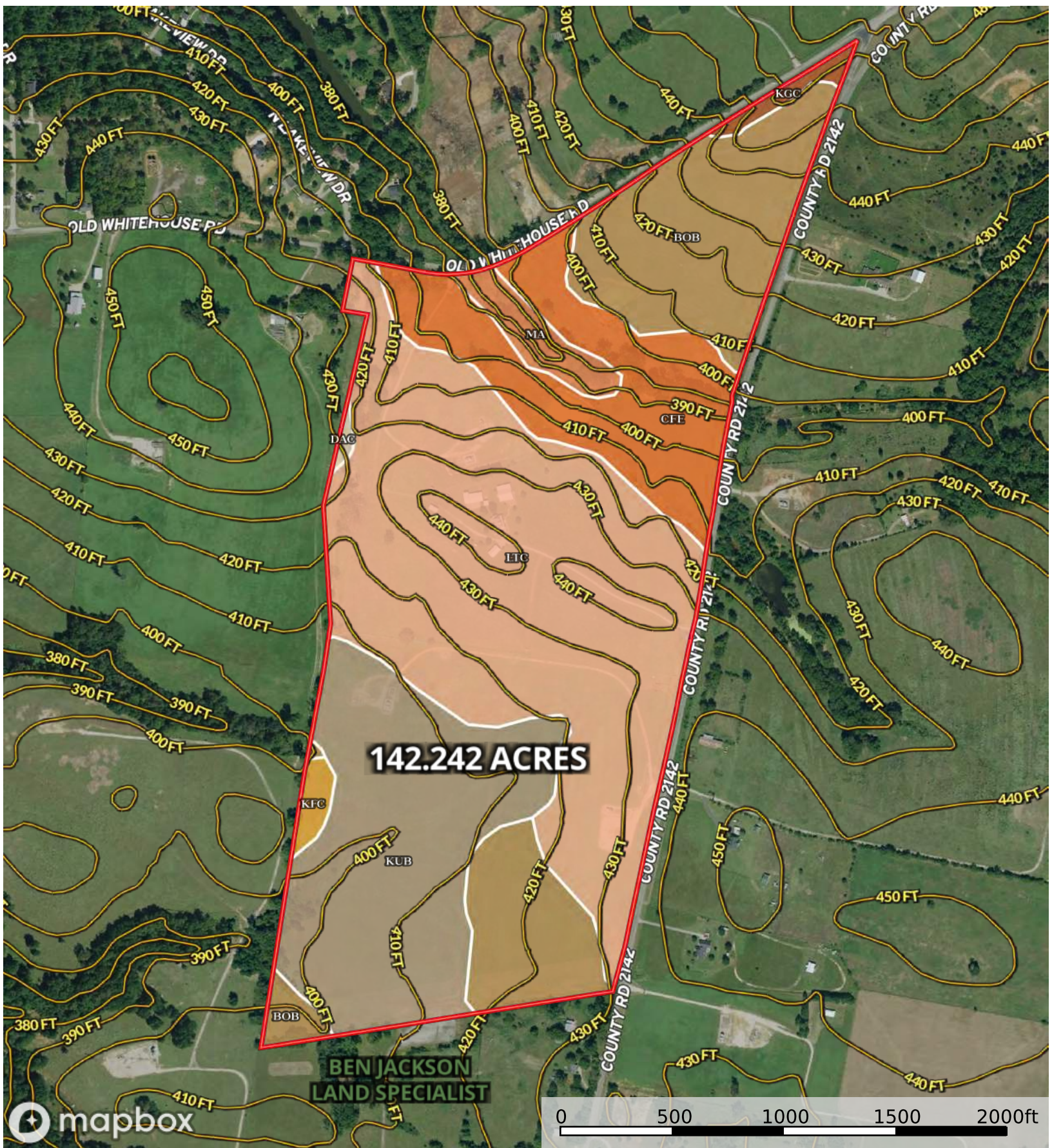


Griggs opinion of value
Smith County, Texas, 142.242 AC +/-



Boundary

Boundary 143.29 ac

SOIL CODE	SOIL DESCRIPTION	ACRES	%	CPI	NCCPI	CAP
LtC	Lilbert loamy fine sand, 1 to 6 percent slopes	58.43	40.78	0	38	3e
KuB	Kullit fine sandy loam, 1 to 3 percent slopes	30.67	21.41	0	79	2e
BoB	Bowie fine sandy loam, 1 to 5 percent slopes	28.68	20.02	0	80	3e
CfE	Cuthbert fine sandy loam, 5 to 20 percent slopes	19.45	13.57	0	59	6e
Ma	Mattex loam, 0 to 1 percent slopes, frequently flooded	3.3	2.3	0	66	5w
KgC	Kirvin gravelly fine sandy loam, 2 to 8 percent slopes	1.25	0.87	0	61	4e
KfC	Kirvin very fine sandy loam, 1 to 5 percent slopes	1.17	0.82	0	65	3e
DaC	Darco loamy fine sand, 1 to 6 percent slopes	0.34	0.24	0	40	3s
TOTALS		143.28(*)	100%	-	59.11	3.25

(*) Total acres may differ in the second decimal compared to the sum of each acreage soil. This is due to a round error because we only show the acres of each soil with two decimal.

