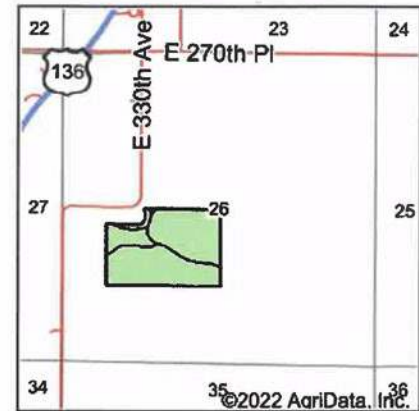
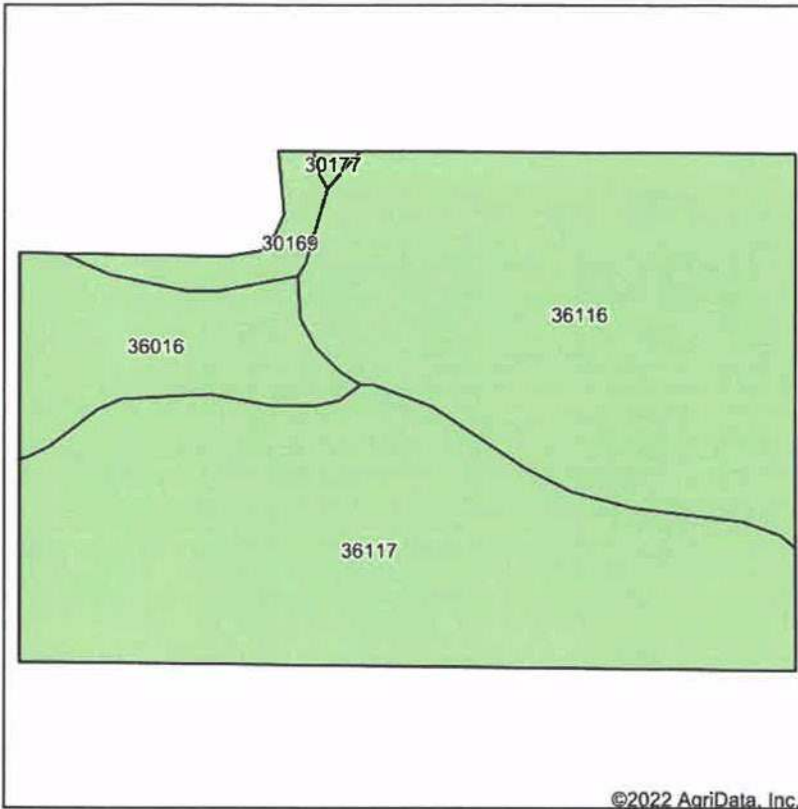


Soils Map



State: **Missouri**
 County: **Harrison**
 Location: **26-64N-26W**
 Township: **Trail Creek**
 Acres: **54.33**
 Date: **4/13/2022**

United Country
 NELSON REAL ESTATE

Maps Provided By:

surety
 CUSTOMIZED ONLINE MAPS
 © AgriData, Inc. 2021 www.AgriDataInc.com



Soils data provided by USDA and NRCS.

©2022 AgriData, Inc.

Area Symbol: MO081, Soil Area Version: 25

Code	Soil Description	Acres	Percent of field	Non-Irr Class *c	Caucasian bluestem Tons	Common bermudagrass Tons	Orchardgrass red clover Tons	Tall fescue Tons	Warm season grasses Tons
36117	Nodaway silt loam, heavy till, 0 to 2 percent slopes, occasionally flooded	25.01	46.0%	IIw					
36116	Zook silty clay loam, heavy till, 0 to 2 percent slopes, occasionally flooded	21.84	40.2%	IIw					
36016	Humeston silt loam, 0 to 2 percent slopes, occasionally flooded	5.83	10.7%	IIIw					
30169	Pershing silt loam, 5 to 9 percent slopes	1.51	2.8%	IIIe					
30177	Pershing silty clay loam, 5 to 9 percent slopes, severely eroded	0.14	0.3%	IVe	2	8	7	8	10
Weighted Average				2.14	*..	*..	*..	*..	*..

*c: Using Capabilities Class Dominant Condition Aggregation Method