




21.88 ac XXX Hwy24W TW  
Amite County, Mississippi, 21.88 AC +/-








21.88 ac XXX Hwy24W TW  
Amite County, Mississippi, 21.88 AC +/-



 Boundary

 Stream,  
Intermittent

 River/Creek

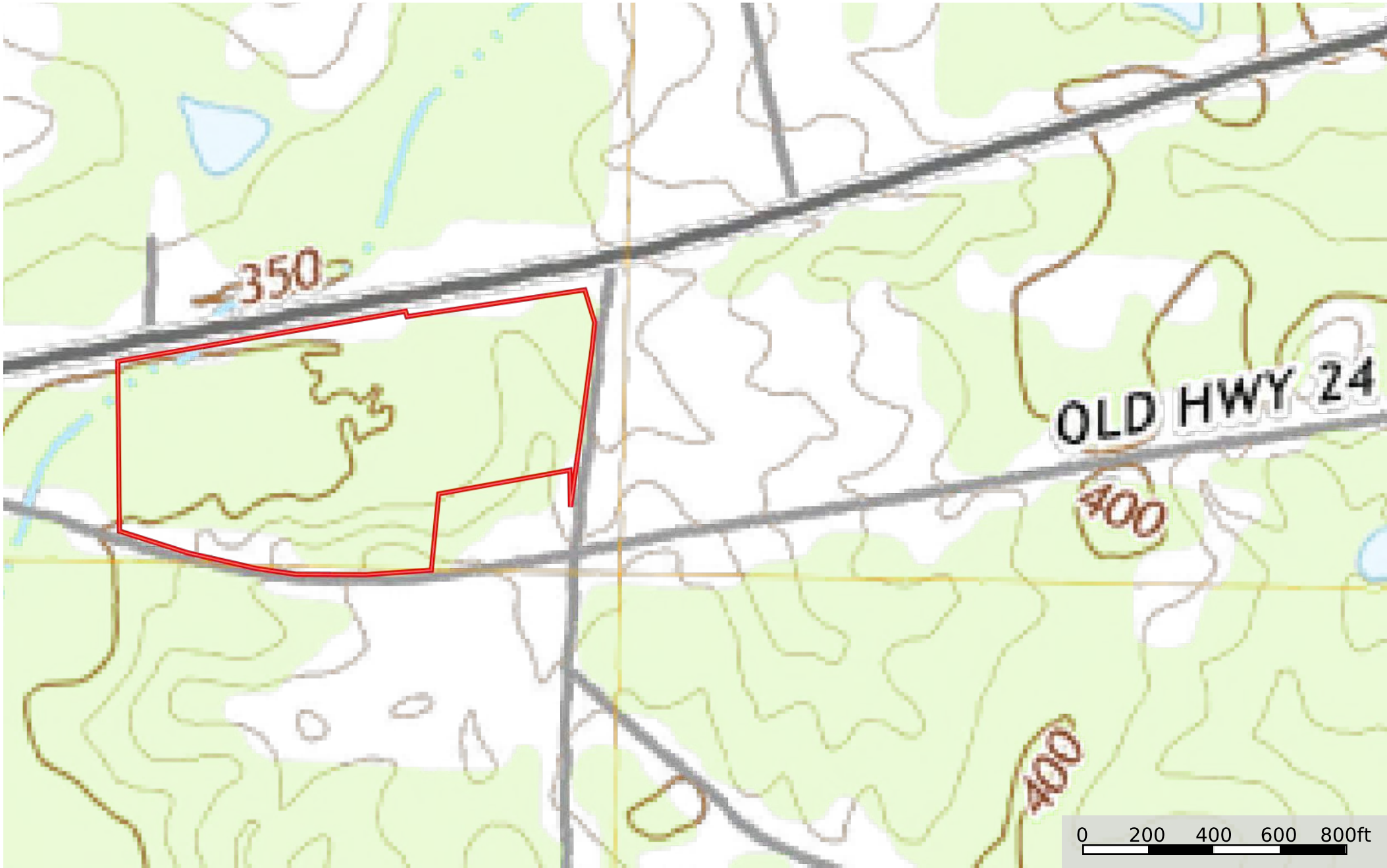
 Water Body







21.88 ac XXX Hwy24W TW  
Amite County, Mississippi, 21.88 AC +/-



 Boundary