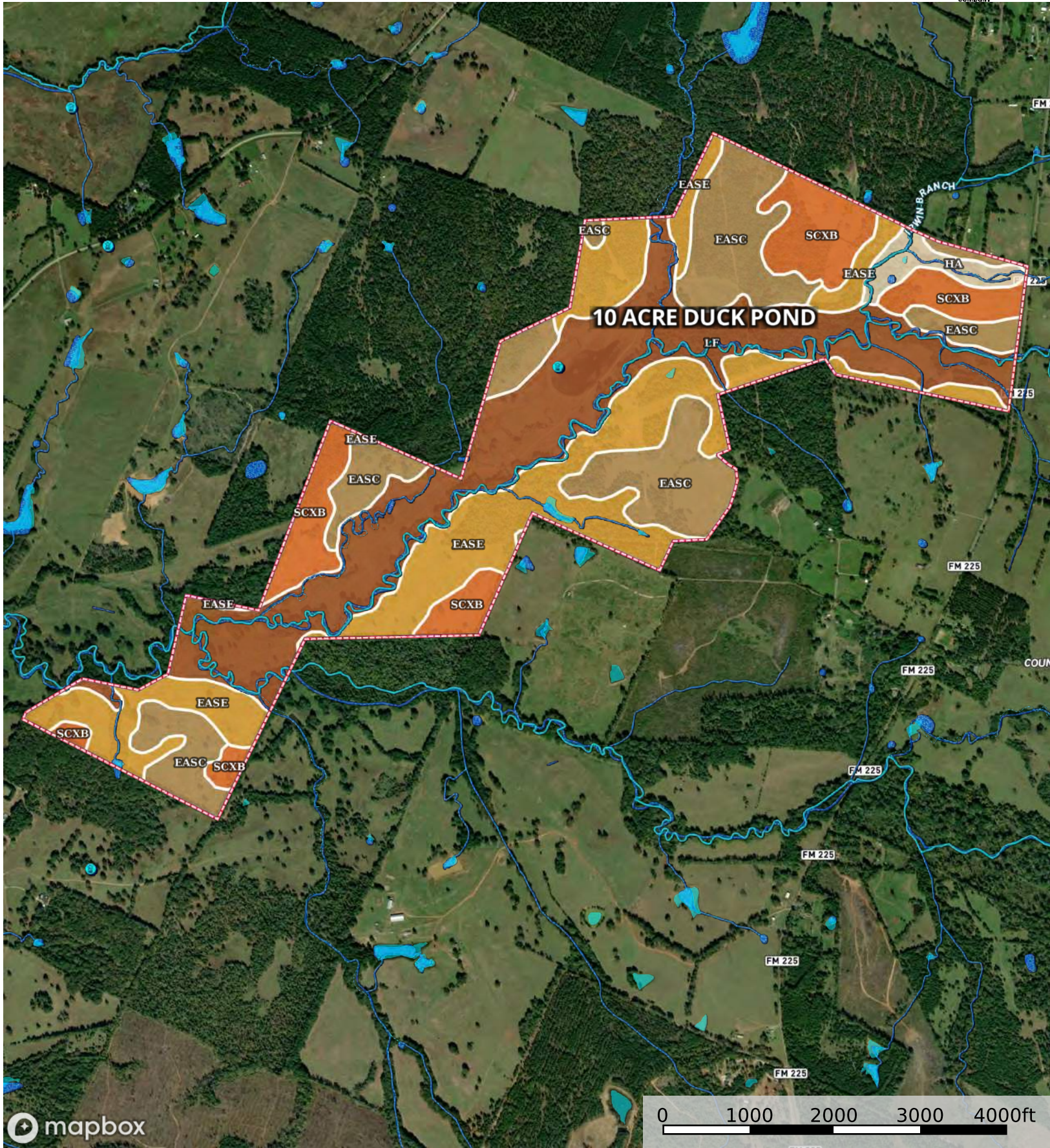


Running N Ranch for Sale Laneville TX Rusk County - Hunt
Rusk County, Texas, 602 AC +/-



- Boundary
- Wetlands
- Riparian
- Stream, Intermittent
- River/Creek
- Water Body
- Water Wells

| Boundary 597.56 ac

SOIL CODE	SOIL DESCRIPTION	ACRES	%	CPI	NCCPI	CAP
Lf	Laneville loam, 0 to 1 percent slopes, frequently flooded	199.8 2	33.44	0	56	5w
EasE	Eastwood very fine sandy loam, 5 to 20 percent slopes	163.4 4	27.35	0	61	6e
EasC	Eastwood very fine sandy loam, 1 to 5 percent slopes	139.5 2	23.35	0	73	4e
ScxB	Scottsville-Latex complex, 0 to 2 percent slopes	80.29	13.44	0	65	2w
Ha	Hannahatchee fine sandy loam, 0 to 1 percent slopes, occasionally flooded	14.49	2.42	0	81	2w
TOTALS		597.5 6(*)	100%	-	63.15	4.56









(*) Total acres may differ in the second decimal compared to the sum of each acreage soil. This is due to a round error because we only show the acres of each soil with two decimal.

Capability Legend

Increased Limitations and Hazards

Decreased Adaptability and Freedom of Choice Users

Land, Capability

								
	1	2	3	4	5	6	7	8
'Wild Life'	•	•	•	•	•	•	•	•
Forestry	•	•	•	•	•	•	•	
Limited	•	•	•	•	•	•	•	
Moderate	•	•	•	•	•	•		
Intense	•	•	•	•	•			
Limited	•	•	•	•				
Moderate	•	•	•					
Intense	•	•						
Very Intense	•							

Grazing Cultivation

(c) climatic limitations (e) susceptibility to erosion

(s) soil limitations within the rooting zone (w) excess of water