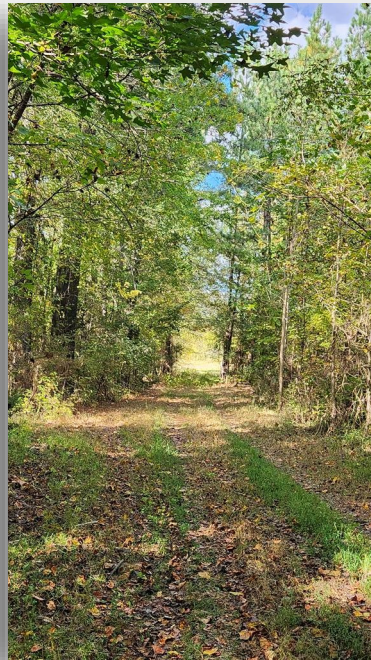


# Slice of Nature's Paradise Awaits



#6841-#68765-72±Acres-\$249,000.00 Welcome to 72 acres of enchanting planted pines nestled in the Crooked Creek area of North Whittles Mill Road in Lunenburg County, VA. Embrace the serenity of this gem, where the whispering pines tell tales of nature's beauty. Heightening pines, approximately 7 years old, adorn the landscape, creating a picturesque haven. Explore with ease! A drivable road winds through the property, offering convenient access for your viewing pleasure. Nature enthusiasts and hunters rejoice! Abundant evidence of deer, turkey, and bear make this property an excellent choice for those seeking a hunting retreat. Beyond its natural allure, envision the possibilities—whether it's creating your dream home, establishing a farm, or building a homestead, this canvas is ready for your vision. Less than 20 minutes away from the town of South Hill, VA, and I-85, where modern amenities await. Access to doctors' offices, hospitals, shopping, and dining is just a short drive away. This property isn't just land; it's an invitation to a lifestyle surrounded by nature's wonders. Your future home, farm, or hunting haven awaits! Call today because tomorrow may be too late!

United Country Virginia Realty

405 Virginia Avenue, PO Box 655

Clarksville, Virginia 23927

434-374-2011

[www.ucvirginiarealty.com](http://www.ucvirginiarealty.com)