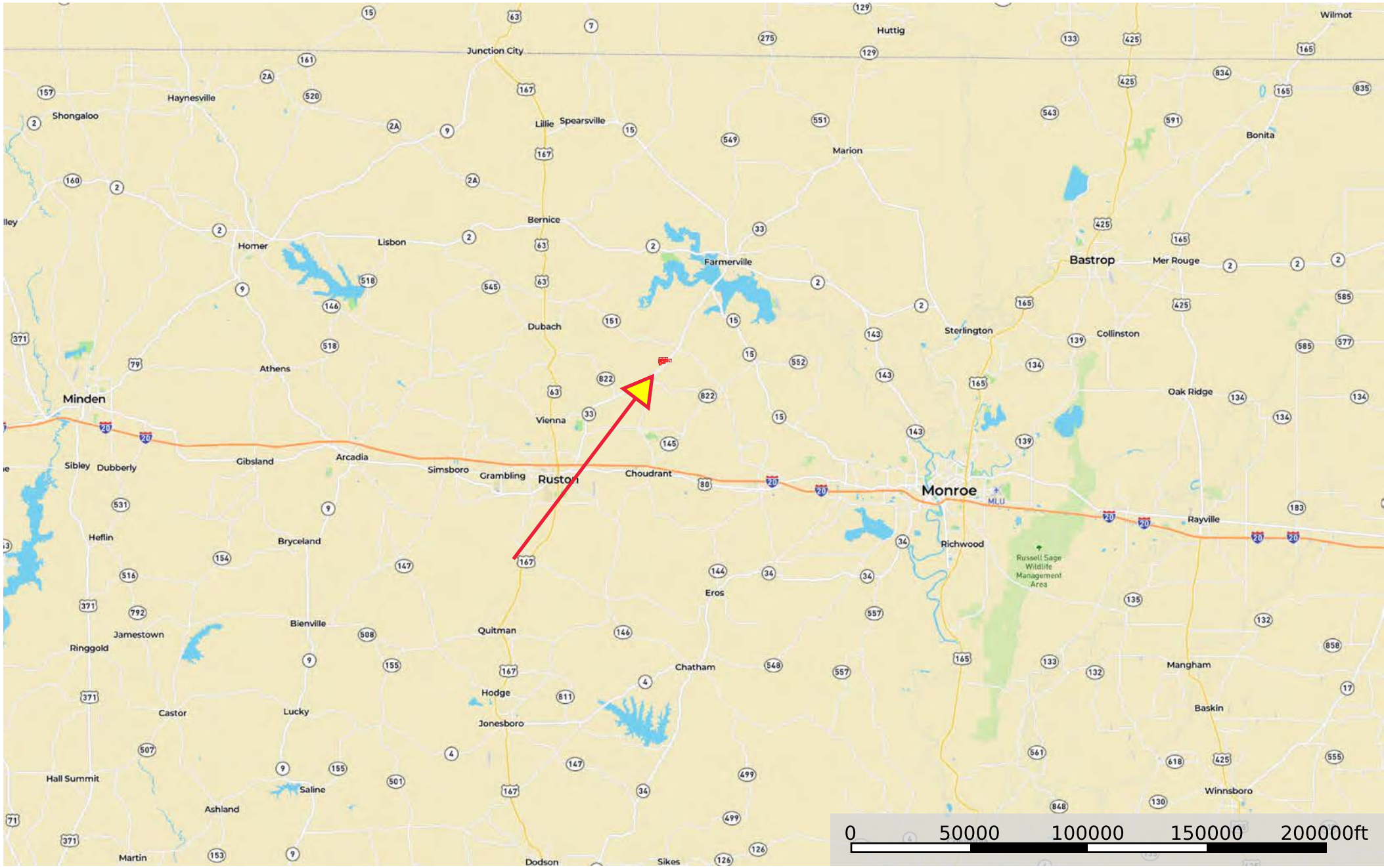



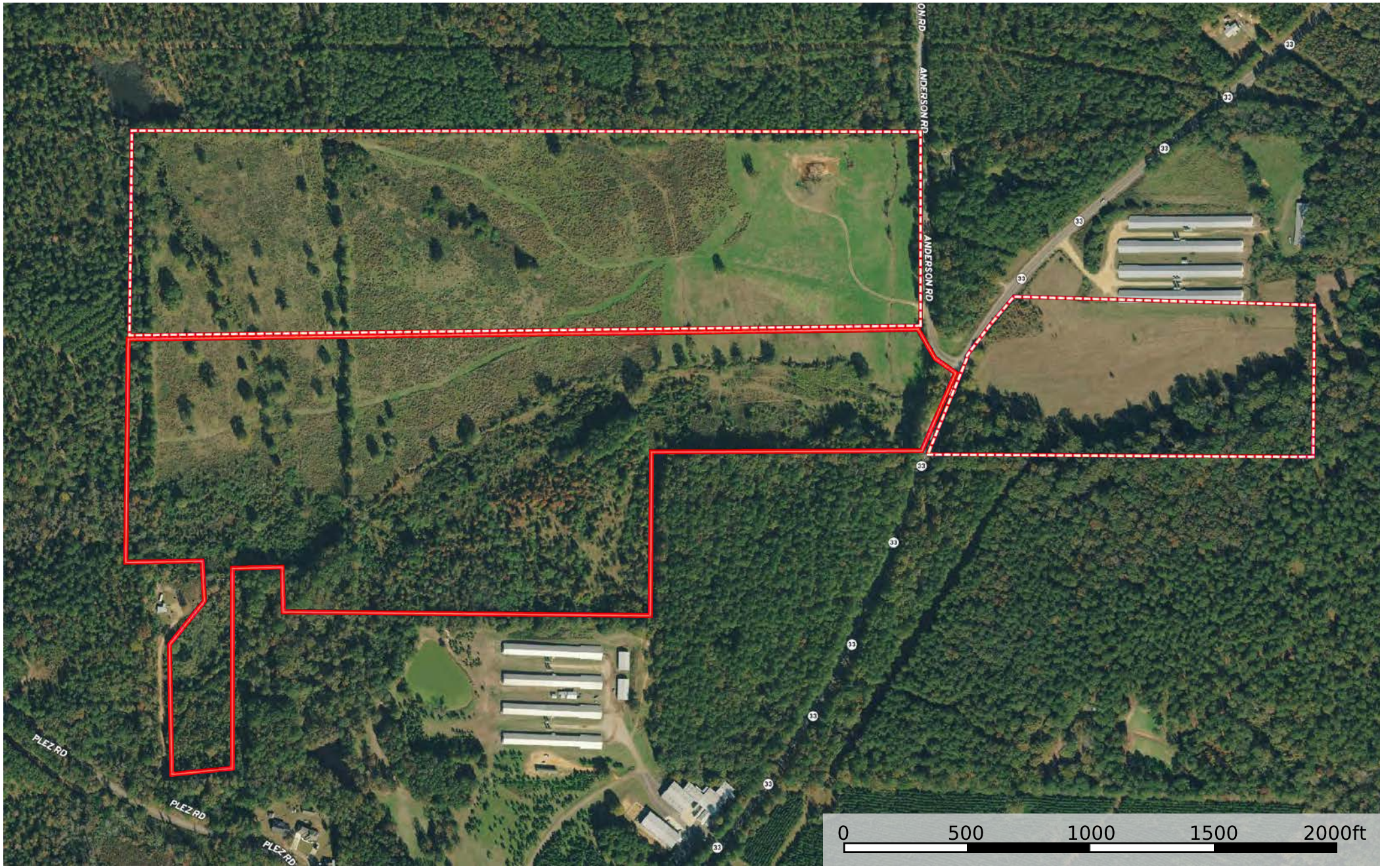
# Telford Cut Up Opt 3

Louisiana, AC +/-



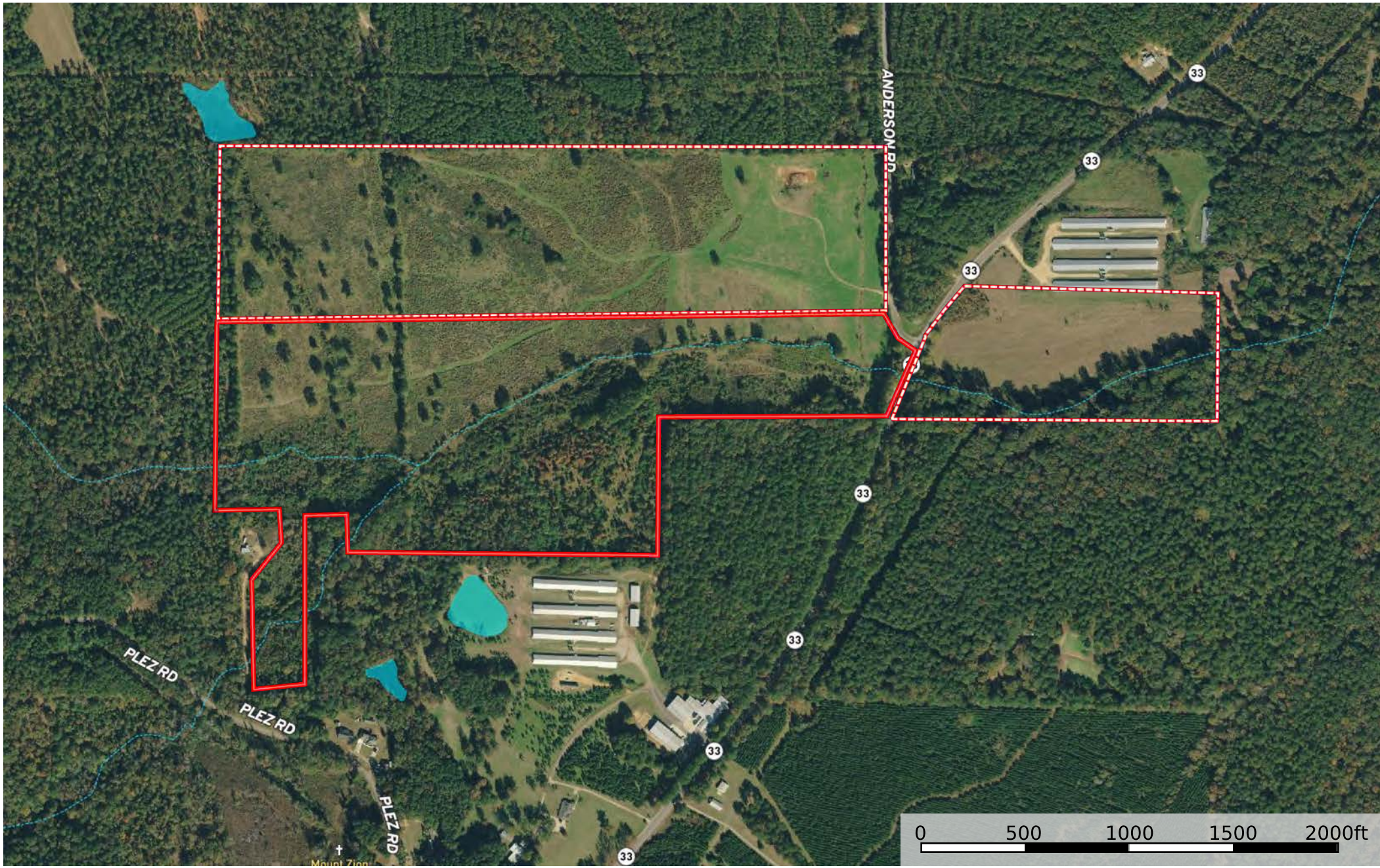
 Boundary  Boundary





 Boundary  Boundary

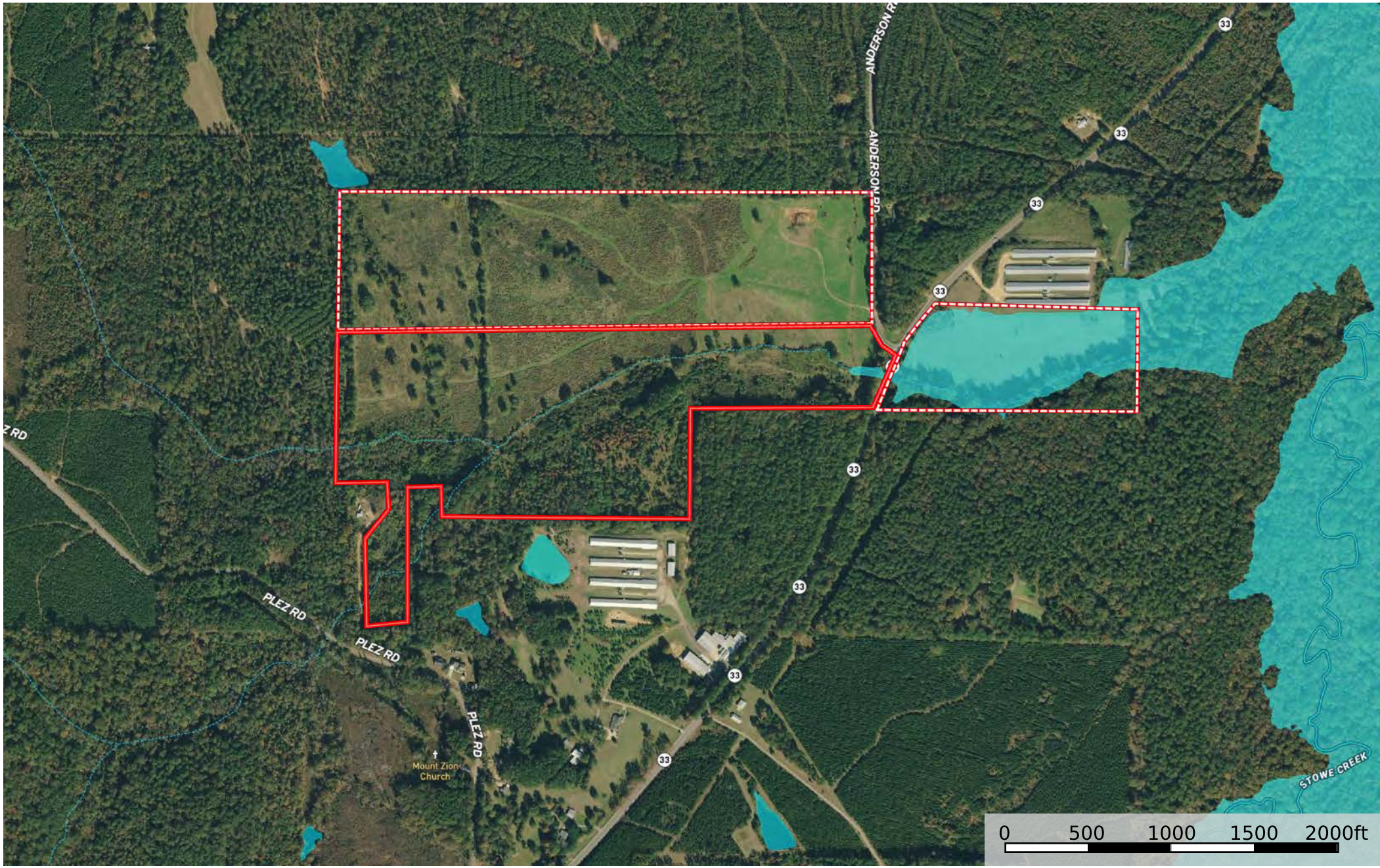






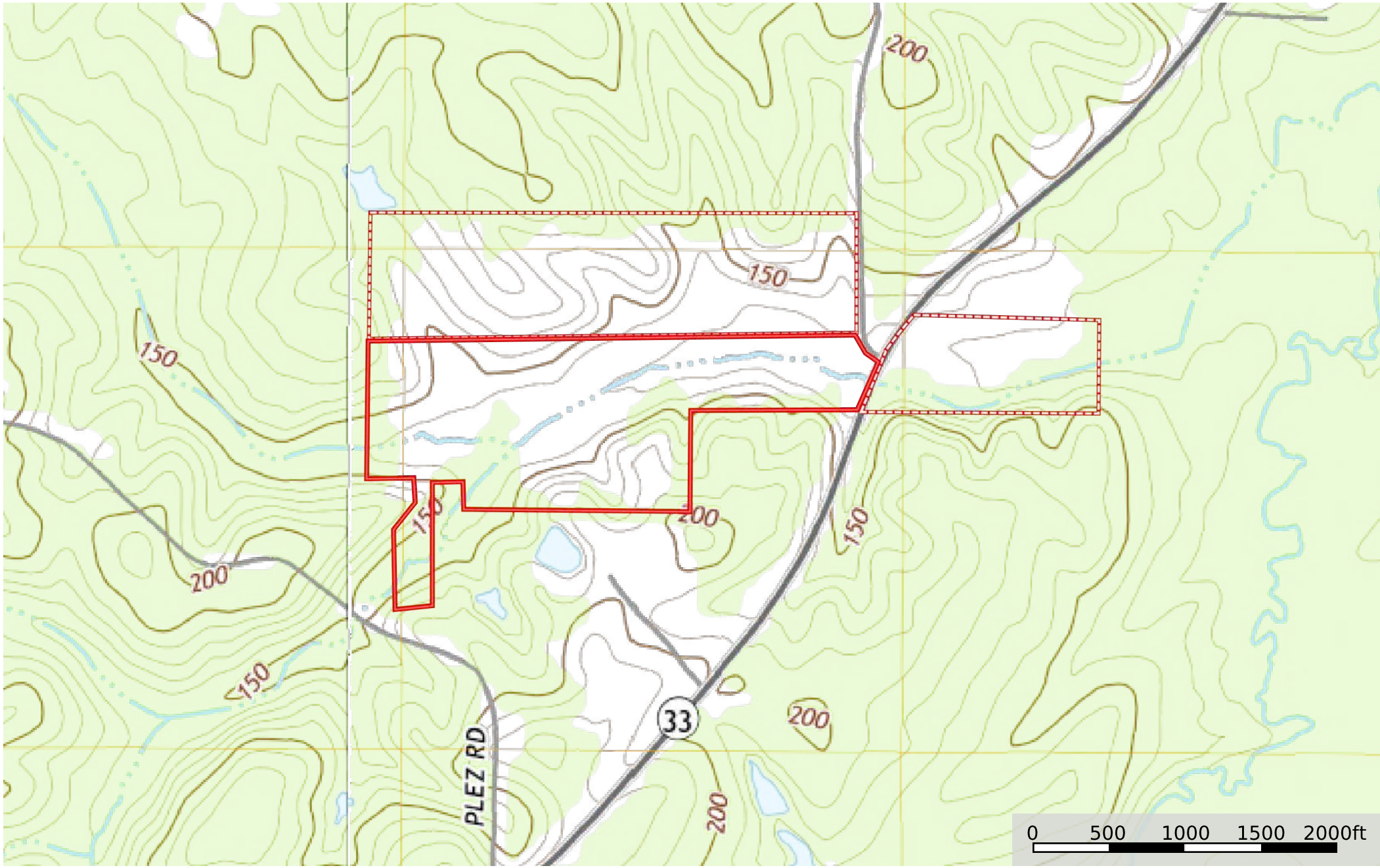
# Telford Cut Up Opt 3

Louisiana, AC +/-



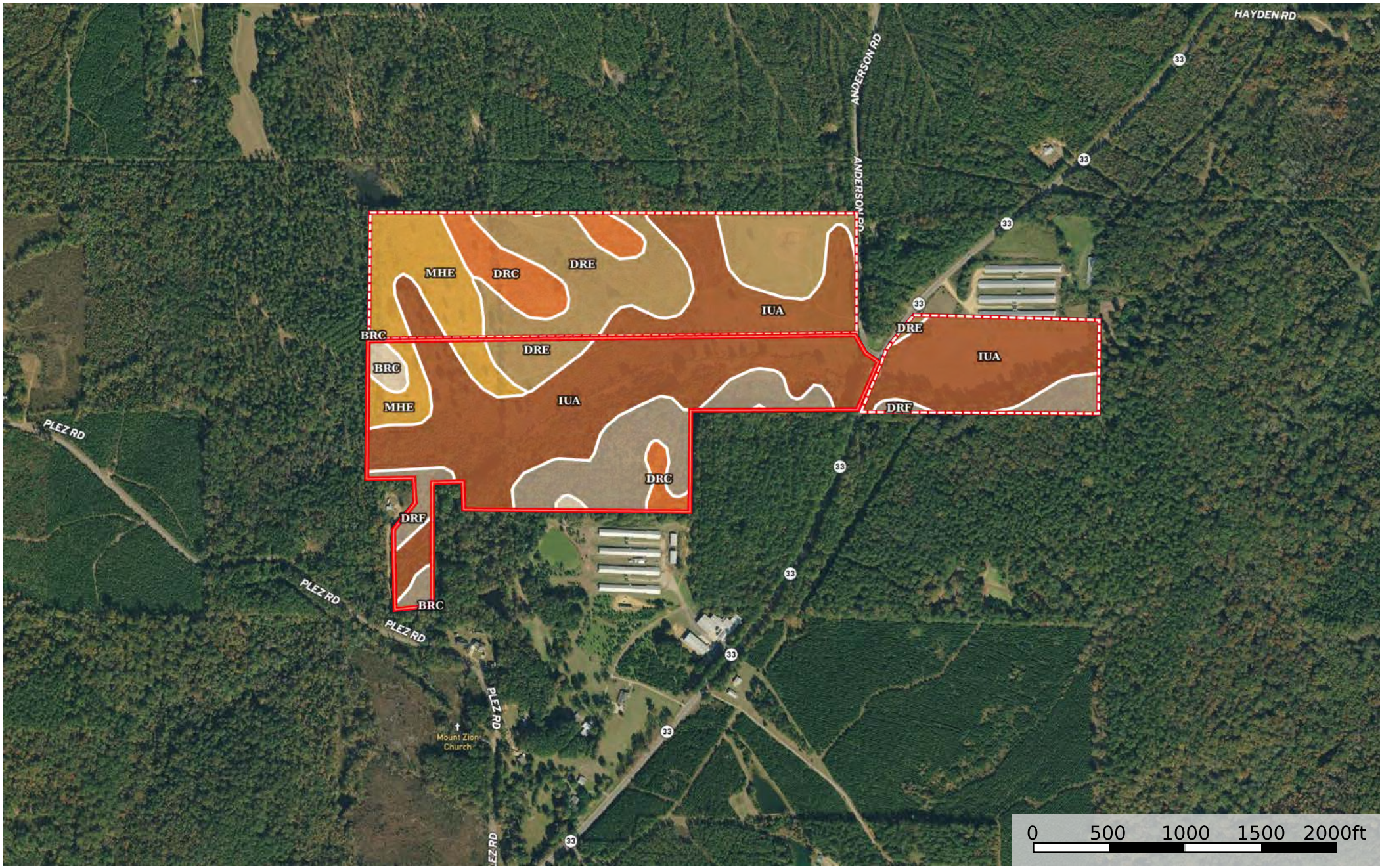
- Boundary
- Boundary
- 100 Year Floodplain
- 500 Year Floodplain
- Floodway
- Special
- Unmapped/ Not Included
- Stream, Intermittent
- River/Creek
- Water Body





□ Boundary □ Boundary





Boundary Boundary



|  All Polygons 148.53 ac

SOIL CODE	SOIL DESCRIPTION	ACRES	%	CPI	NCCPI	CAP
IUA	Iuka-Dela complex, 0 to 1 percent slopes, frequently flooded	72.64	48.91	0	65	2w
DRE	Darley gravelly fine sandy loam, 5 to 12 percent slopes	28.45	19.15	0	51	6e
DRF	Darley-Sacul association, 12 to 30 percent slopes	20.58	13.86	0	54	6e
MHE	Mahan fine sandy loam, 5 to 12 percent slopes	15.56	10.48	0	73	6e
DrC	Darley gravelly fine sandy loam, 1 to 5 percent slopes	9.41	6.34	0	52	3e
BrC	Briley loamy fine sand, 1 to 5 percent slopes	1.89	1.27	0	56	3e
TOTALS		148.53(*)	100%	-	60.69	3.82

(\*) Total acres may differ in the second decimal compared to the sum of each acreage soil. This is due to a round error because we only show the acres of each soil with two decimal.

|  Boundary 59.24 ac

SOIL CODE	SOIL DESCRIPTION	ACRES	%	CPI	NCCPI	CAP
DRE	Darley gravelly fine sandy loam, 5 to 12 percent slopes	24.67	41.64	0	51	6e
IUA	Iuka-Dela complex, 0 to 1 percent slopes, frequently flooded	16.43	27.73	0	65	2w
MHE	Mahan fine sandy loam, 5 to 12 percent slopes	10.35	17.47	0	73	6e
DrC	Darley gravelly fine sandy loam, 1 to 5 percent slopes	7.73	13.05	0	52	3e
BrC	Briley loamy fine sand, 1 to 5 percent slopes	0.06	0.1	0	56	3e
TOTALS		59.24(*)	100%	-	58.86	4.5

(\*) Total acres may differ in the second decimal compared to the sum of each acreage soil. This is due to a round error because we only show the acres of each soil with two decimal.

|  Boundary 68.84 ac

SOIL CODE	SOIL DESCRIPTION	ACRES	%	CPI	NCCPI	CAP
IUA	Iuka-Dela complex, 0 to 1 percent slopes, frequently flooded	38.96	56.6	0	65	2w
DRF	Darley-Sacul association, 12 to 30 percent slopes	17.71	25.73	0	54	6e
MHE	Mahan fine sandy loam, 5 to 12 percent slopes	5.21	7.57	0	73	6e
DRE	Darley gravelly fine sandy loam, 5 to 12 percent slopes	3.45	5.01	0	51	6e
BrC	Briley loamy fine sand, 1 to 5 percent slopes	1.83	2.66	0	56	3e
DrC	Darley gravelly fine sandy loam, 1 to 5 percent slopes	1.68	2.44	0	52	3e
TOTALS		68.84(*)	100%	-	61.52	3.58

(\*) Total acres may differ in the second decimal compared to the sum of each acreage soil. This is due to a round error because we only show the acres of each soil with two decimal.

|  Boundary 20.45 ac

SOIL CODE	SOIL DESCRIPTION	ACRES	%	CPI	NCCPI	CAP
-----------	------------------	-------	---	-----	-------	-----

IUA	Iuka-Dela complex, 0 to 1 percent slopes, frequently flooded	17.25	84.35	0	65	2w
DRF	Darley-Sacul association, 12 to 30 percent slopes	2.87	14.03	0	54	6e
DRE	Darley gravelly fine sandy loam, 5 to 12 percent slopes	0.33	1.61	0	51	6e
TOTALS		20.45(*)	100%	-	63.23	2.63

(\*) Total acres may differ in the second decimal compared to the sum of each acreage soil. This is due to a round error because we only show the acres of each soil with two decimal.

