



# Monroe County Rec Land with Building Sites

1914 515th Avenue, Albia, IA 52531

**Hawkeye Farm  
Mgmt & Real Estate**

**Price:** \$420,000

**Acres:** 54 +/-







## PROPERTY DETAILS

- Desirable Setting & Stunning Views
- Hay Ground, Timber & Pond with Concrete Dock
- Diverse Layout & Developed Trail System
- Great Building Sites
- Near Highway 34
- Annual Taxes 1,450

## CONTACT US



**Hawkeye  
Farm Mgmt &  
Real Estate**

 (641) 932-7796  
 [Hawkeye@UClowa.com](mailto:Hawkeye@UClowa.com)  
 [www.UClowa.com](http://www.UClowa.com)  
 1010 S Clinton  
 Albia, IA 52531



**RYAN AMMONS**  
(641) 777- 2955

[Ryan@UClowa.com](mailto:Ryan@UClowa.com)



**NATE AMMONS**  
(641) 777-2861

[Nate@UClowa.com](mailto:Nate@UClowa.com)

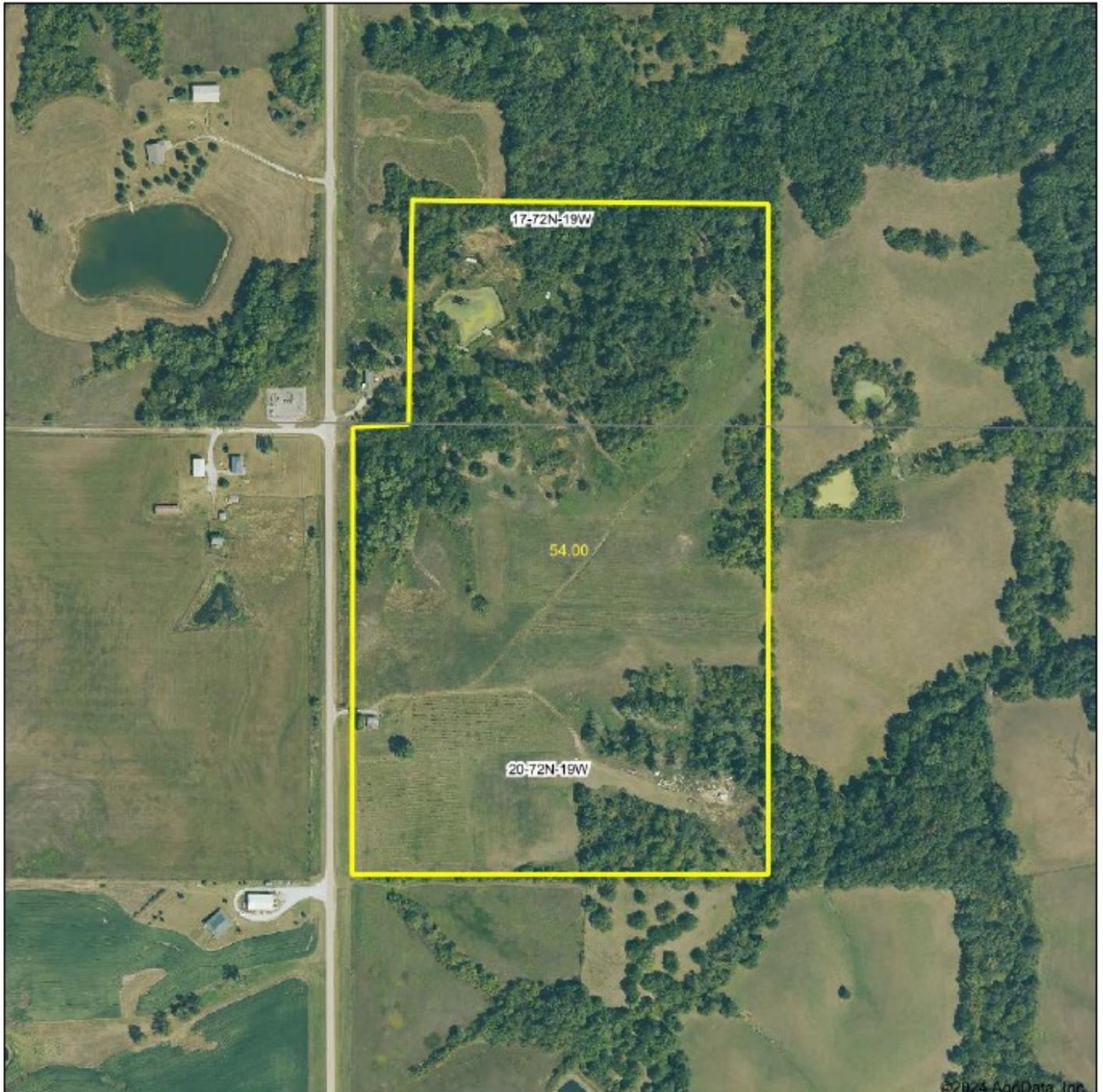
Alan Ammons, Broker, Licensed in Iowa & Missouri. All Agents Licensed in Iowa. The above information, although believed to be accurate, is not warranted or guaranteed by the owner, listing firm, or listing agent.

# PROPERTY MAP



Hawkeye  
Farm Mgmt &  
Real Estate

Aerial Map  
Boundary Lines Are Approximate



© 2024 AgriData, Inc.

Hawkeye Farm Mgmt & Real Estate

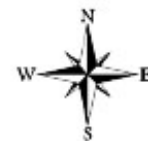


22 N Main, Albia IA Phone: 641-832-7796  
Email: [Hawkeye@hawkeye.com](mailto:Hawkeye@hawkeye.com)  
On the web: [www.uccare.com](http://www.uccare.com)  
[www.hawkeyefarm.com](http://www.hawkeyefarm.com)

Boundary Center: 41° 1' 45.47", -93° 4' 3.5"

0ft 483ft 926ft

20-72N-19W  
Monroe County  
Iowa



Maps Provided By:



© AgriData, Inc. 2023 [www.AgriDataInc.com](http://www.AgriDataInc.com)

3/11/2024