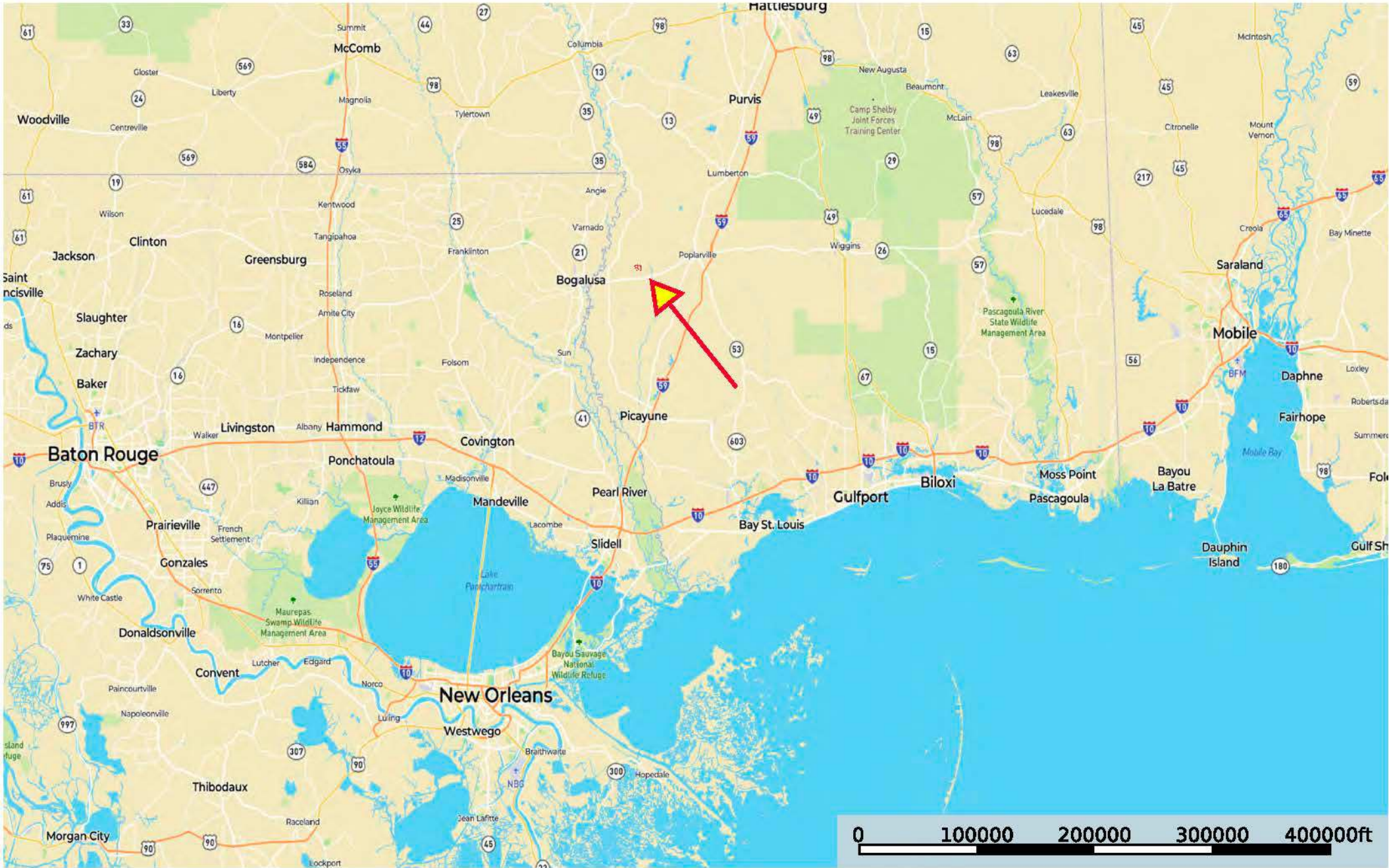


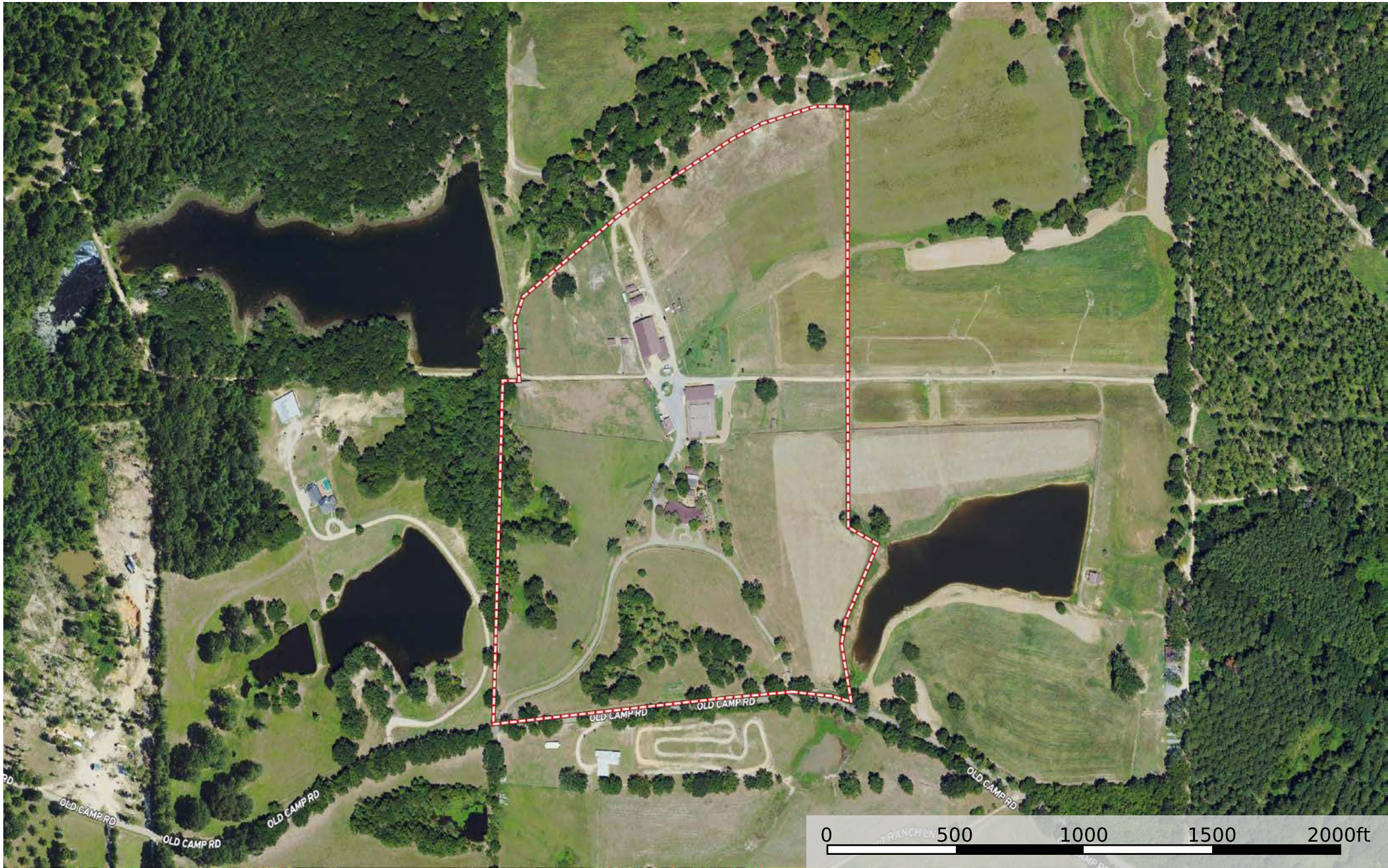
**Running Creek Ranch - 228.8 Acres**  
Pearl River County, Mississippi, 228.8 AC +/-



Boundary

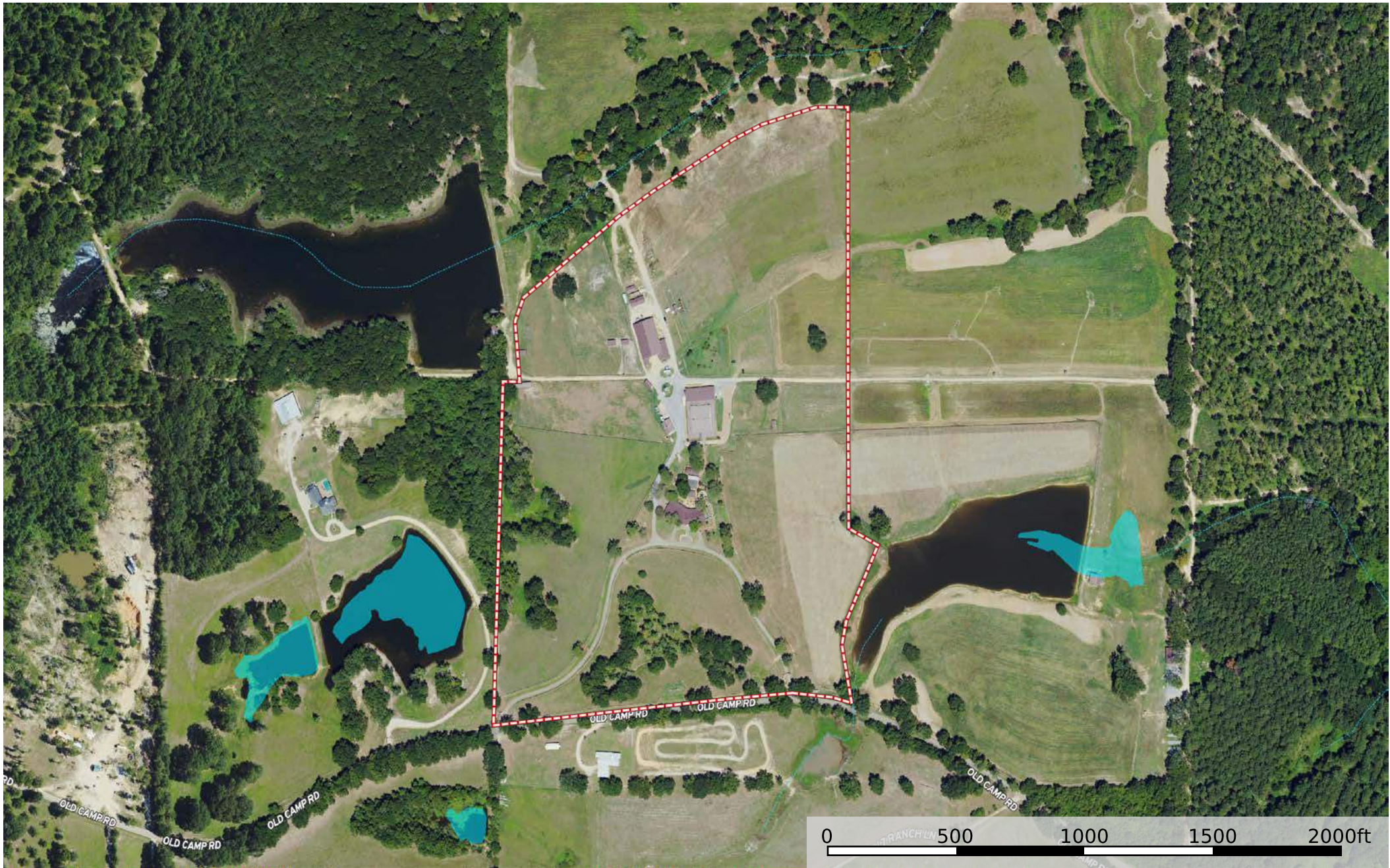



Running Creek Ranch - 53 Acres  
Pearl River County, Mississippi, 53 AC +/-




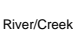



Running Creek Ranch - 53 Acres  
Pearl River County, Mississippi, 53 AC +/-



 Boundary

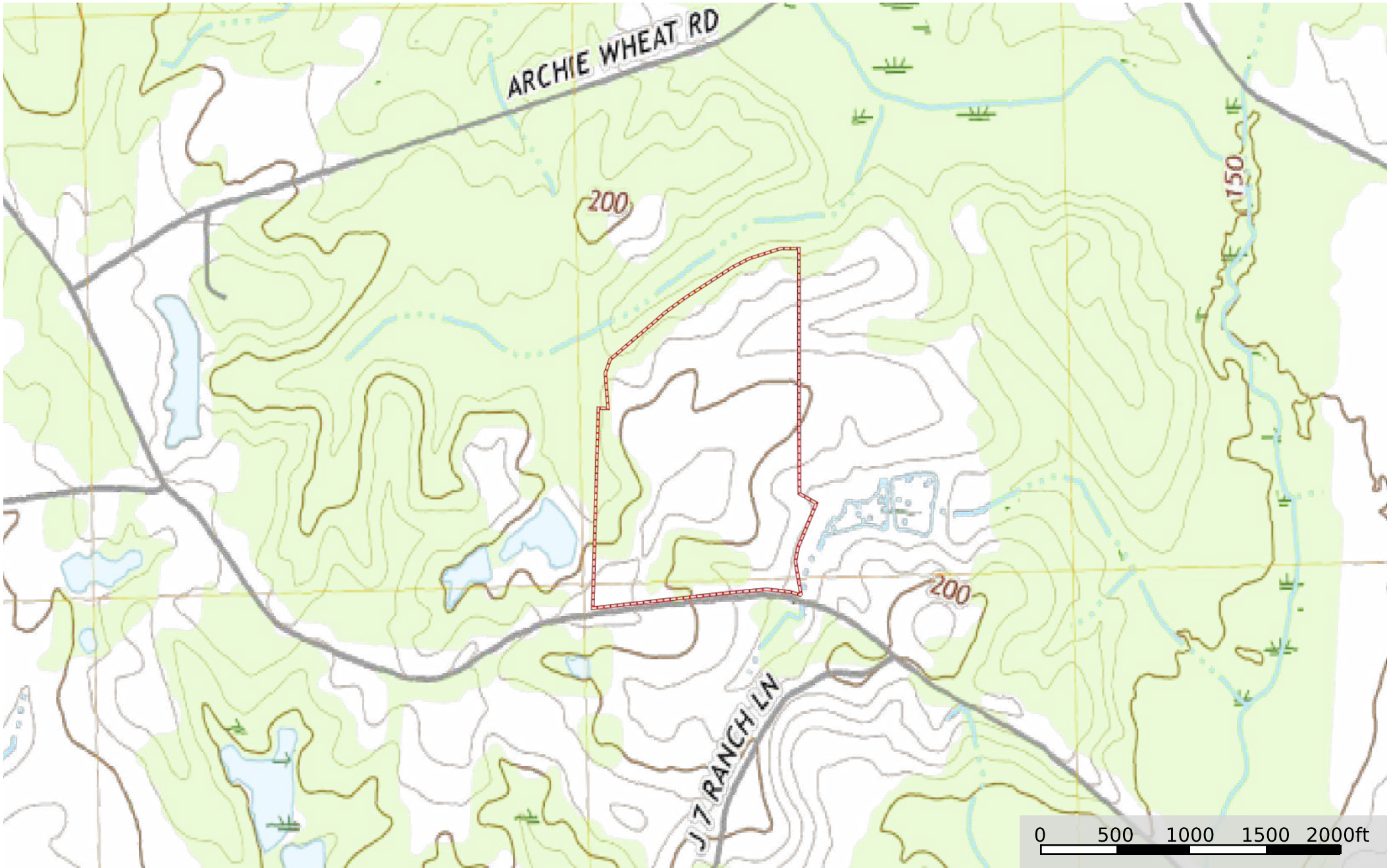
 Stream,  
Intermittent


 River/Creek

 Water Body



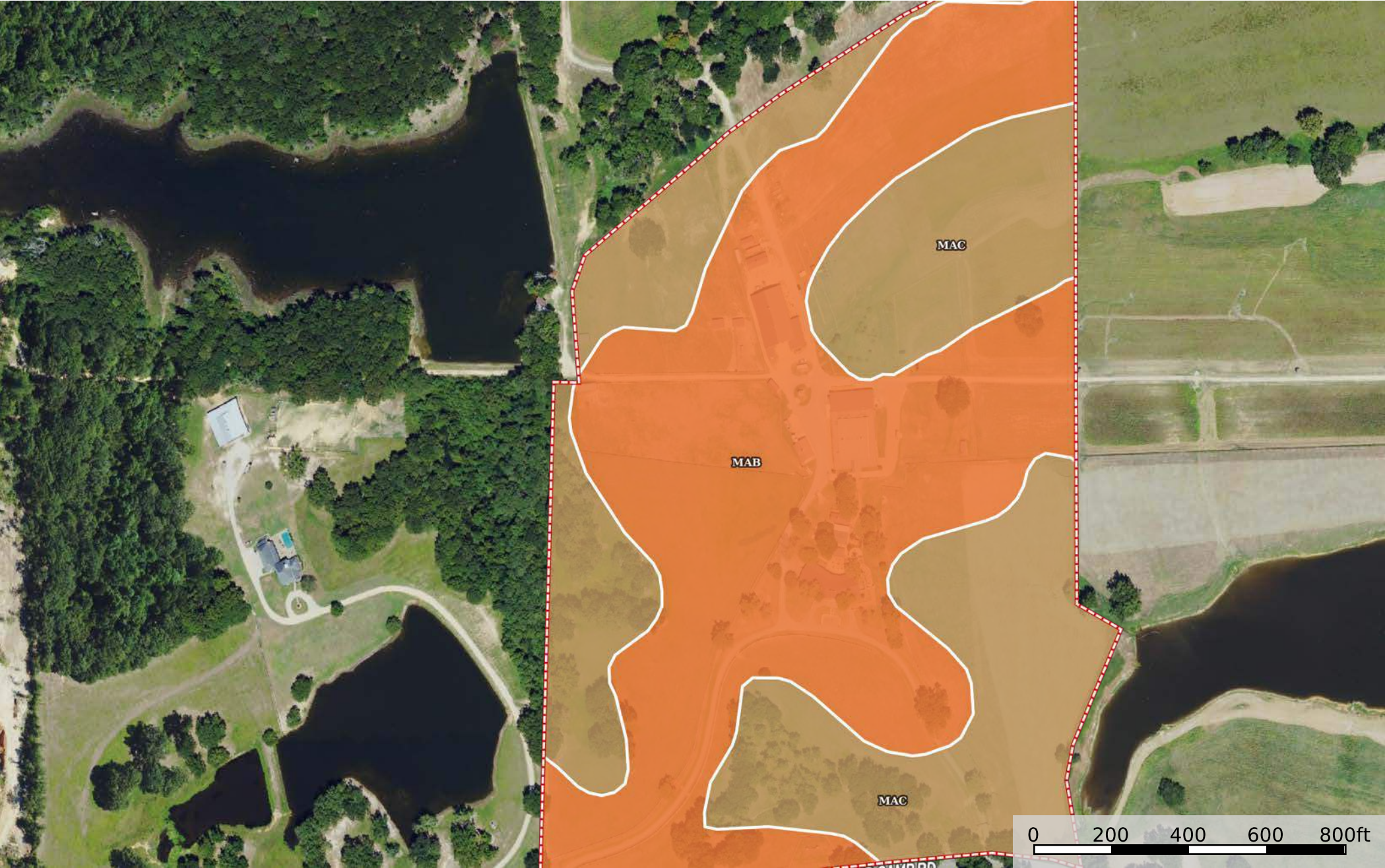
**Running Creek Ranch - 53 Acres**  
Pearl River County, Mississippi, 53 AC +/-



 Boundary



Running Creek Ranch - 53 Acres  
Pearl River County, Mississippi, 53 AC +/-



Boundary

|  Boundary 53.05 ac

SOIL CODE	SOIL DESCRIPTION	ACRES	%	CPI	NCCPI	CAP
MaB	Malbis fine sandy loam, 2 to 5 percent slopes	29.33	55.3	0	59	2e
MaC	Malbis fine sandy loam, 5 to 8 percent slopes	23.72	44.72	0	62	3e
TOTALS		53.05(*)	100%	-	60.35	2.45

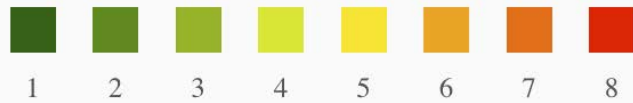
(\*) Total acres may differ in the second decimal compared to the sum of each acreage soil. This is due to a round error because we only show the acres of each soil with two decimal.

## Capability Legend

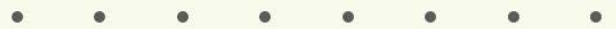
Increased Limitations and Hazards

Decreased Adaptability and Freedom of Choice Users

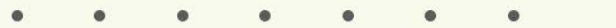
Land, Capability



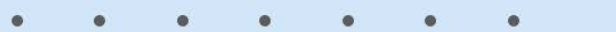
'Wild Life'



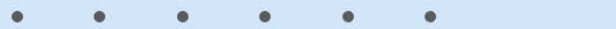
Forestry



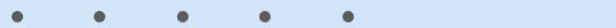
Limited



Moderate



Intense



Limited



Moderate



Intense



Very Intense



## Grazing Cultivation

(c) climatic limitations (e) susceptibility to erosion

(s) soil limitations within the rooting zone (w) excess of water