



Wapello County Row Crop & Investment Land

142nd Street & Compentine Road, Hedrick, IA 52563

**Hawkeye Farm
Mgmt & Real Estate**

Price: \$420,000

Acres: 57 +/-

Price/Acre: \$7,368







PROPERTY DETAILS

- 46 +/- Tillable Acres
- Adair, Otley-Nira & Coly-Ely Soils
- 58.8 CSR2
- 16 CRP Acres Earning \$3,950 through 9/2024
- Access from 2 Roads
- Potential Building Sites
- Recreational Benefits
- Annual Taxes \$1,148

CONTACT US



**Hawkeye
Farm Mgmt &
Real Estate**

 (641) 932-7796
 Hawkeye@UClowa.com
 www.UClowa.com
 1010 S Clinton
 Albia, IA 52531



RYAN AMMONS
(641) 777- 2955

Ryan@UClowa.com



NATE AMMONS
(641) 777-2861

Nate@UClowa.com



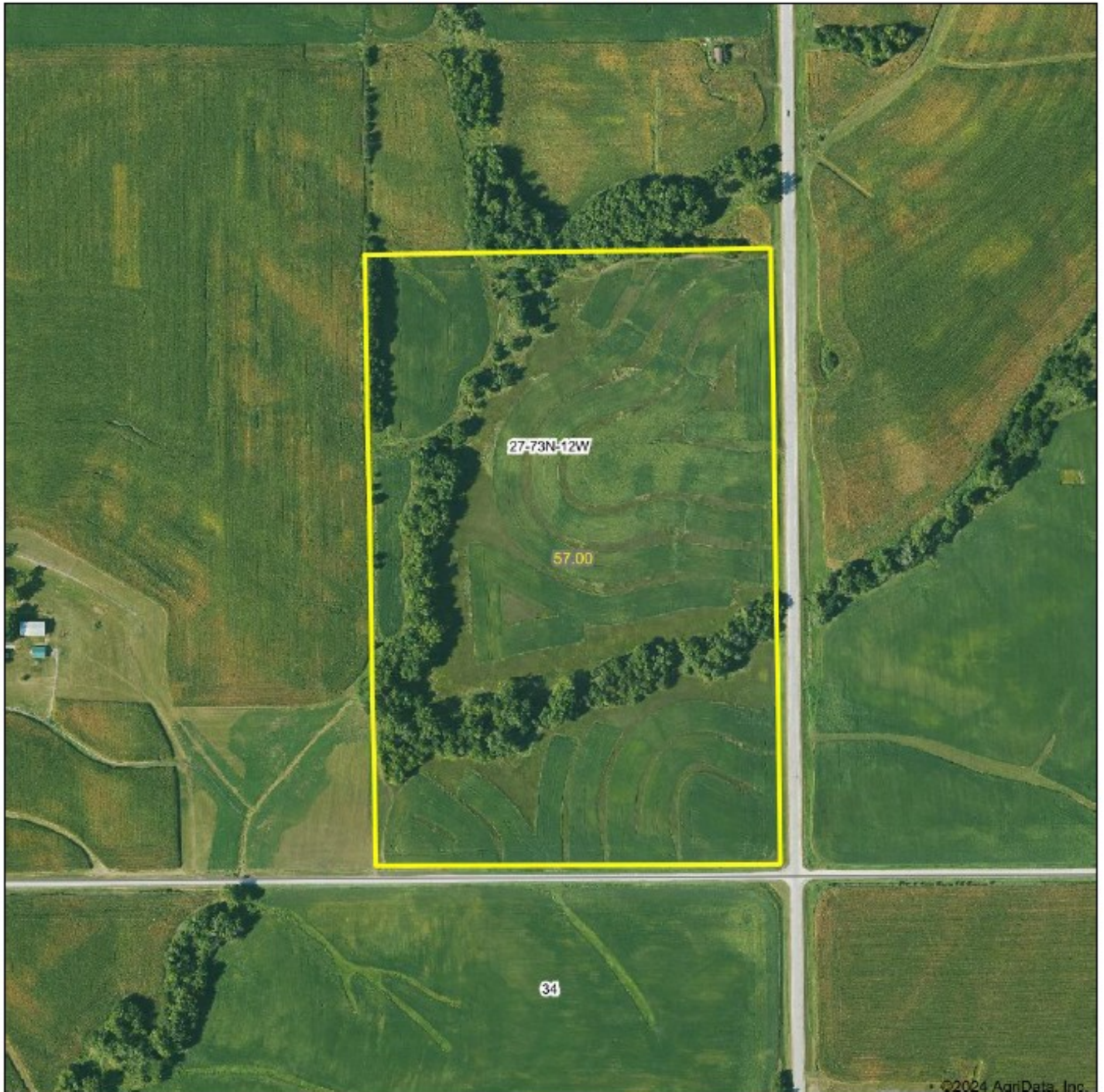
Alan Ammons, Broker, Licensed in Iowa & Missouri. All Agents Licensed in Iowa. The above information, although believed to be accurate, is not warranted or guaranteed by the owner, listing firm, or listing agent.

PROPERTY MAP



**Hawkeye
Farm Mgmt &
Real Estate**

Aerial Map
Boundary Lines Are Approximate



© 2024 AgriData, Inc.

Hawkeye Farm Mgmt & Real Estate



22 N Main, Alta IA Phone: 641-652-7796
Email: hawkeye@ucire.com
On the web: www.ucire.com
www.hawkeyefarm.com

Boundary Center: 41° 5' 35.74, -92° 13' 48.15

0ft 492ft 984ft

Maps Provided By



© AgriData, Inc. 2023

www.AgriDataInc.com

27-73N-12W
Wapello County
Iowa



6/18/2024