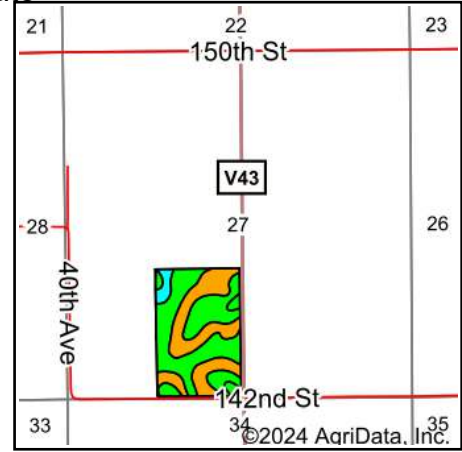
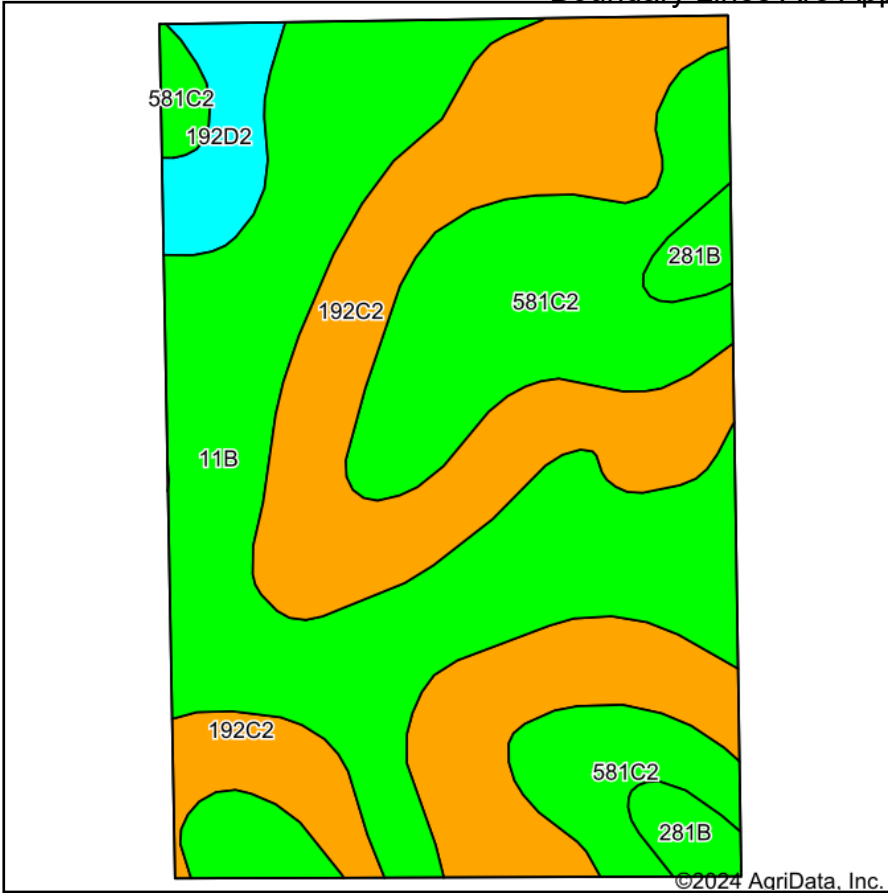


# Soils Map

Boundary Lines Are Approximate



State: **Iowa**  
 County: **Wapello**  
 Location: **27-73N-12W**  
 Township: **Competine**  
 Acres: **57**  
 Date: **6/18/2024**



Soils data provided by USDA and NRCS.

Area Symbol: IA179, Soil Area Version: 32

Code	Soil Description	Acres	Percent of field	CSR2 Legend	Non-Irr Class *c	CSR2**	CSR	*n NCCPI Corn	*n NCCPI Soybeans	
192C2	Adair clay loam, 5 to 9 percent slopes, moderately eroded	20.85	36.6%		IIIe	35	31	61	45	
11B	Colo-Ely complex, 0 to 5 percent slopes	18.99	33.3%		IIw	86	68	92	76	
581C2	Otley-Nira silty clay loams, 5 to 9 percent slopes, moderately eroded	13.36	23.4%		IIIe	77	68	79	69	
192D2	Adair clay loam, 9 to 14 percent slopes, moderately eroded	2.16	3.8%		IVe	14	15	61	44	
281B	Otley silty clay loam, 2 to 5 percent slopes	1.64	2.9%		IIe	91	90	89	77	
<b>Weighted Average</b>						<b>2.68</b>	<b>62.7</b>	<b>53.1</b>	<b>*n 76.4</b>	<b>*n 61.8</b>

\*\*IA has updated the CSR values for each county to CSR2.

\*n: The aggregation method is "Weighted Average using all components"

\*c: Using Capabilities Class Dominant Condition Aggregation Method

Soils data provided by USDA and NRCS.