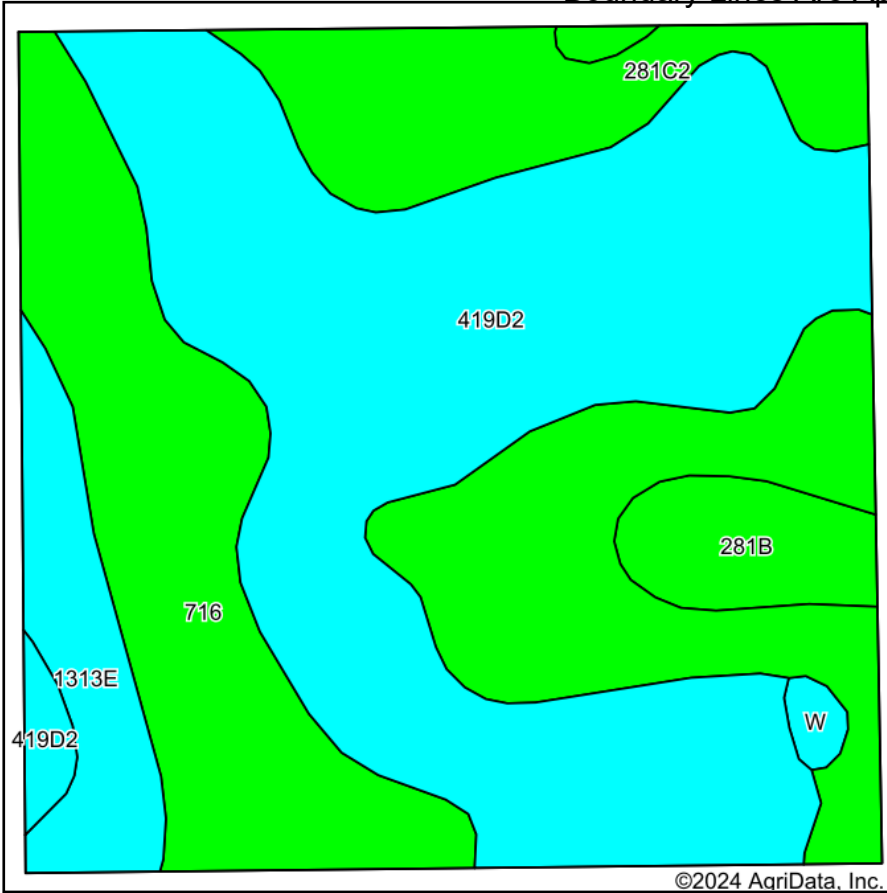
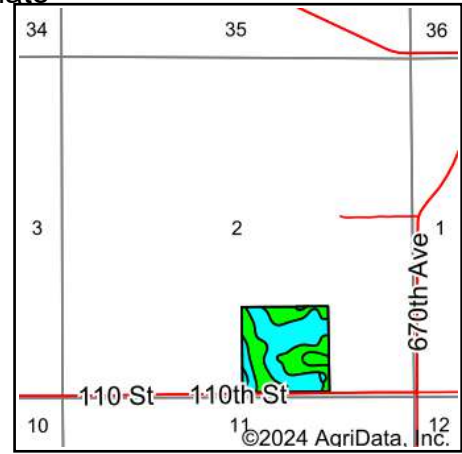


Soils Map

Boundary Lines Are Approximate



Soils data provided by USDA and NRCS.



State: **Iowa**
 County: **Monroe**
 Location: **2-73N-17W**
 Township: **Bluff Creek**
 Acres: **39**
 Date: **6/18/2024**

Hawkeye Farm Mgmt & Real Estate

 22 N Main, Alto IA Phone: 562-952-7796
 Email: hawkeye@hrciowa.com
 Cell: 562-660-1000 www.iaawhitehillfarms.com

Maps Provided By:
surety[®]
 CUSTOMIZED ONLINE MAPPING
 © AgriData, Inc. 2023 www.AgriDataInc.com



Area Symbol: IA135, Soil Area Version: 31

Code	Soil Description	Acres	Percent of field	CSR2 Legend	Non-Irr Class *c	CSR2**	CSR	*n NCCPI Corn	*n NCCPI Soybeans	
419D2	Vanmeter silty clay loam, 9 to 14 percent slopes, moderately eroded	17.70	45.4%		Vle	5	15	38	30	
281C2	Otley silty clay loam, 5 to 9 percent slopes, eroded	9.88	25.3%		Ille	82	70	83	65	
716	Lawson-Quiver-Nodaway complex, 0 to 2 percent slopes, occasionally flooded	7.14	18.3%		Ilw	78		79	86	
1313E	Munterville silt loam, 14 to 18 percent slopes	2.29	5.9%		Vlle	25	10	53	43	
281B	Otley silty clay loam, 2 to 5 percent slopes	1.75	4.5%		Ile	91	90	89	77	
W	Water	0.24	0.6%			0	0			
Weighted Average						*-	42.9	*-	*n 59.8	*n 51.8

**IA has updated the CSR values for each county to CSR2.

*- CSR weighted average cannot be calculated on the current soils data, use prior data version for csr values.

*n: The aggregation method is "Weighted Average using all components"

*c: Using Capabilities Class Dominant Condition Aggregation Method

*- Non Irr Class weighted average cannot be calculated on the current soils data due to missing data.