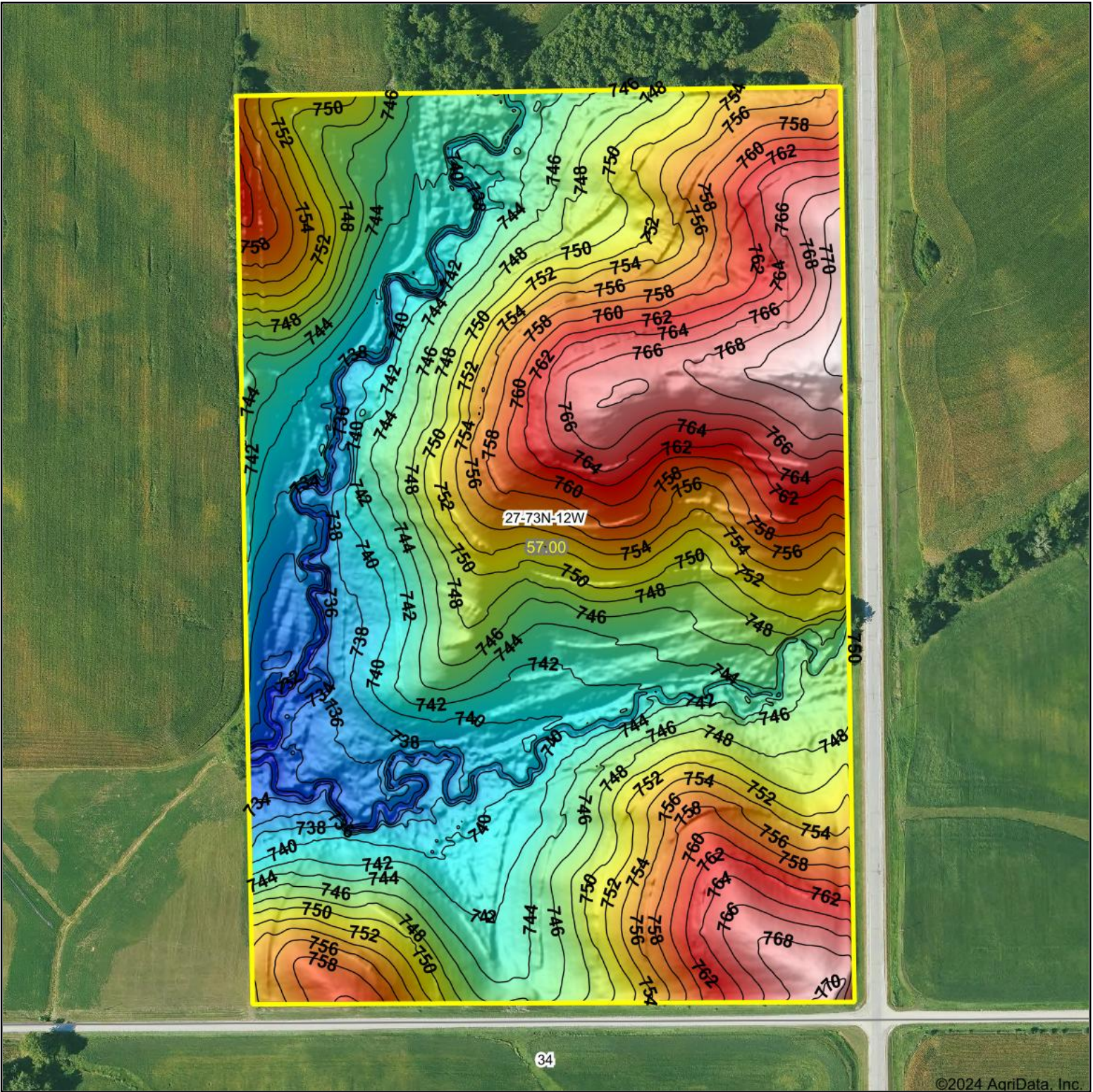


# Topography Hillshade

Boundary Lines Are Approximate



Low	Elevation	High	Source: USGS 1 meter dem	0ft	330ft	661ft
			Interval(ft): 2			
			Min: 729.5	<p>27-73N-12W Wapello County Iowa</p> <p>6/18/2024</p> <p>Boundary Center: 41° 5' 35.74, -92° 13' 48.15</p>		
			Max: 772.9			
			Range: 43.4			
			Average: 750.2			
			Standard Deviation: 9.58 ft			