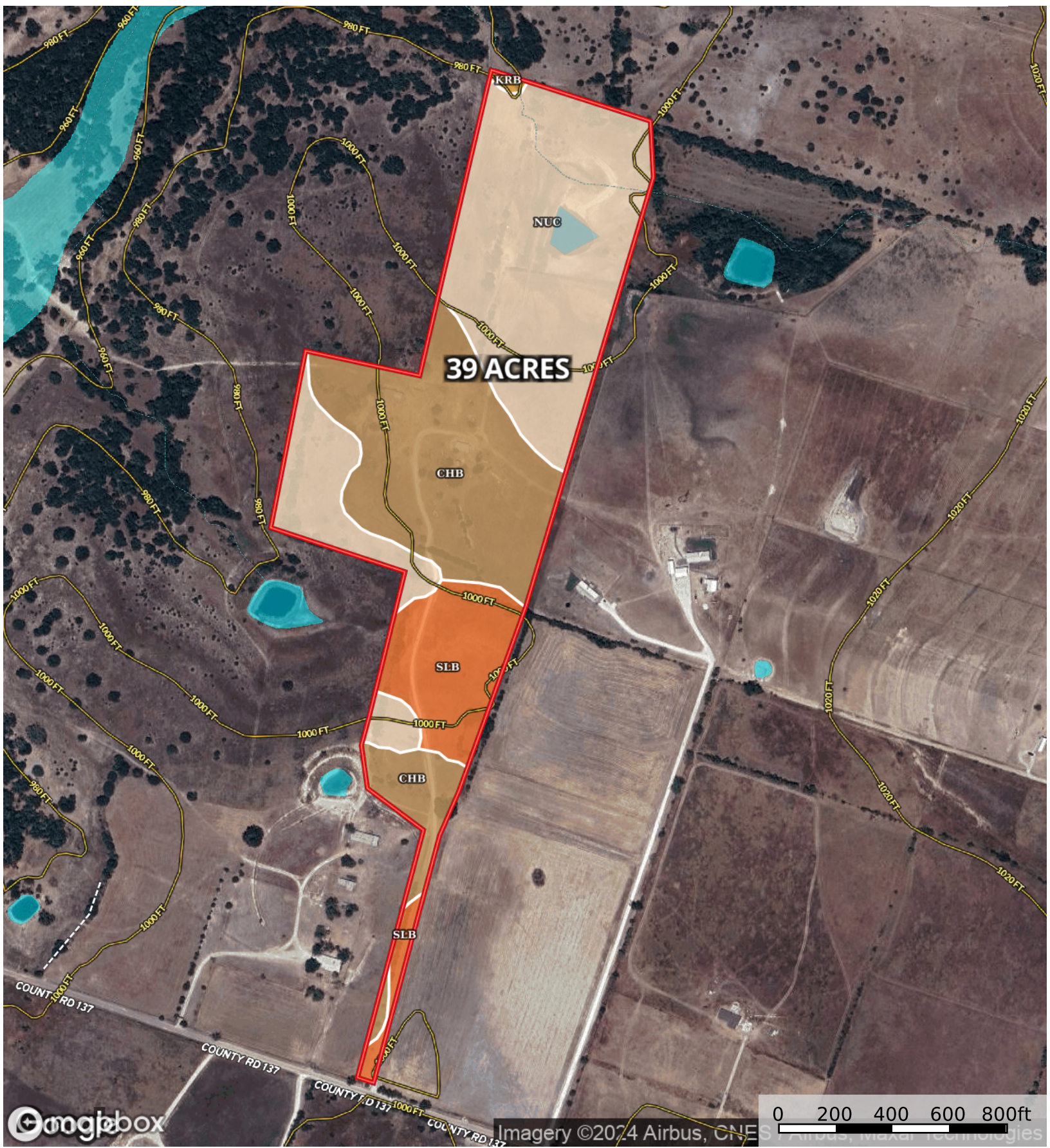


Coston - CR 137
Texas, AC +/-



Googlebox

Imagery ©2024 Airbus, CNES, Airbus, Maxar Technologies

- Fence
- Pond / Tank
- Boundary
- 100 Year Floodplain
- 500 Year Floodplain
- Floodway
- Special
- Unmapped/ Not Included
- Stream, Intermittent
- River/Creek
- Water Body
- Water Wells

|  Boundary 38.93 ac

SOIL CODE	SOIL DESCRIPTION	ACRES	%	CPI	NCCPI	CAP
NuC	Nuff very stony silty clay loam, 2 to 6 percent slopes	19.3	49.56	0	28	6s
ChB	Cho clay loam, 1 to 3 percent slopes	13.9	35.7	0	20	4s
SIB	Slidell silty clay, 0 to 2 percent slopes	5.59	14.36	0	42	3e
KrB	Krum silty clay, cool, 1 to 3 percent slopes	0.14	0.36	0	47	3e
TOTALS		38.93(*)	100%	-	27.22	4.84

(*) Total acres may differ in the second decimal compared to the sum of each acreage soil. This is due to a round error because we only show the acres of each soil with two decimal.

