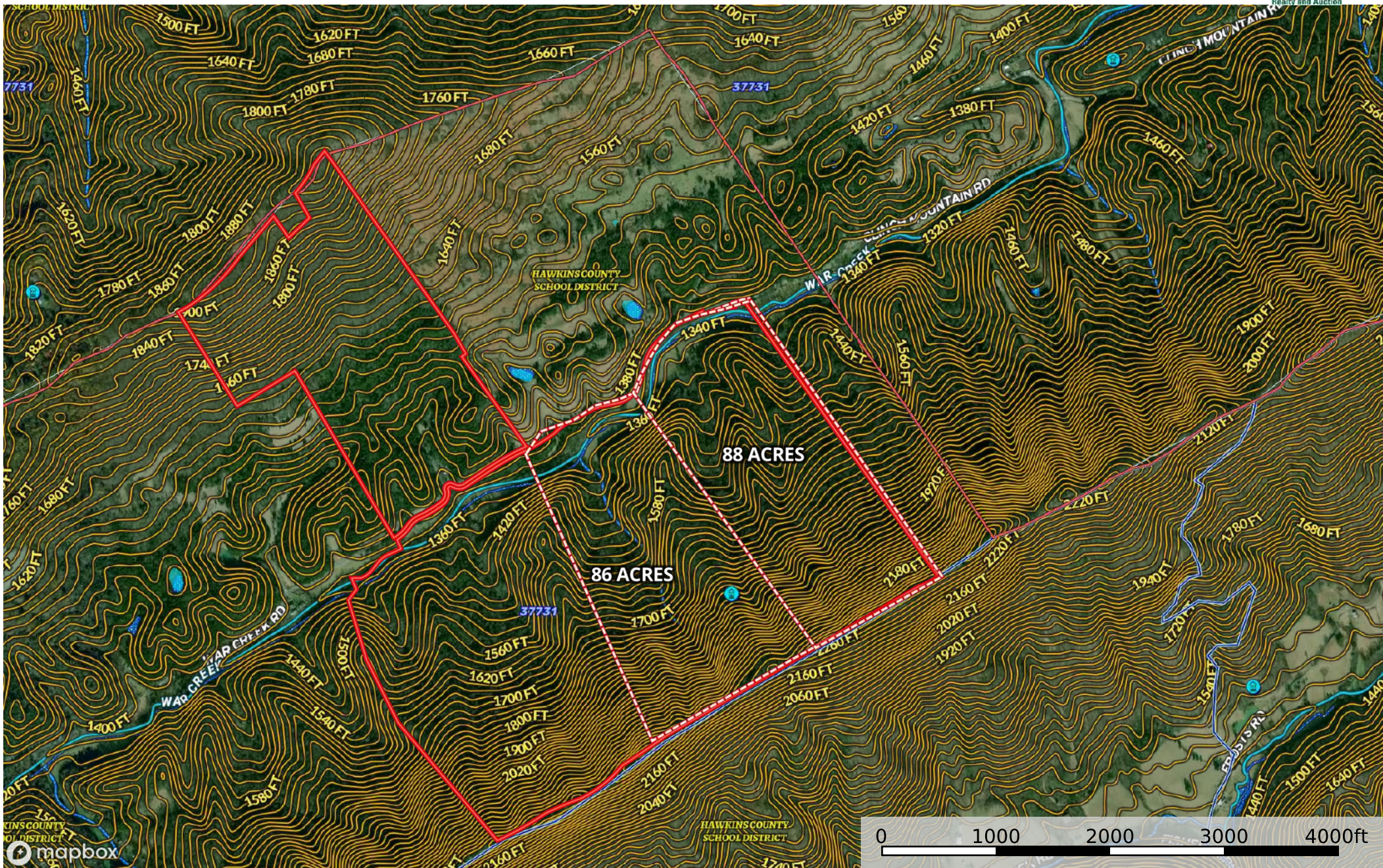


398 Acres War Creek Road Eidson TN 37731
Hawkins County, Tennessee, 398 AC +/-



- Boundary

Boundary

Wind Farms

100 Year Floodplain

500 Year Floodplain

Floodway

Special

Unmapped/Not Included

Wetlands

Riparian

Stream, Intermittent

River/Creek

Water Body

Unified Sch. Dist.
- Secondary Sch. Dist.

Elementary Sch. Dist.

Water Wells

Substations

Aerodrome

Heliport

Seaport

Glider Port

Ultra Light

Ballon Port

Wind Turbines

Joey Haun
P: 423-748-7181

www.ucclinchmountainrealty.com

HWY 25E Bean Station TN 37708



The information contained herein was obtained from sources deemed to be reliable. Land id™ Services makes no warranties or guarantees as to the completeness or accuracy thereof.