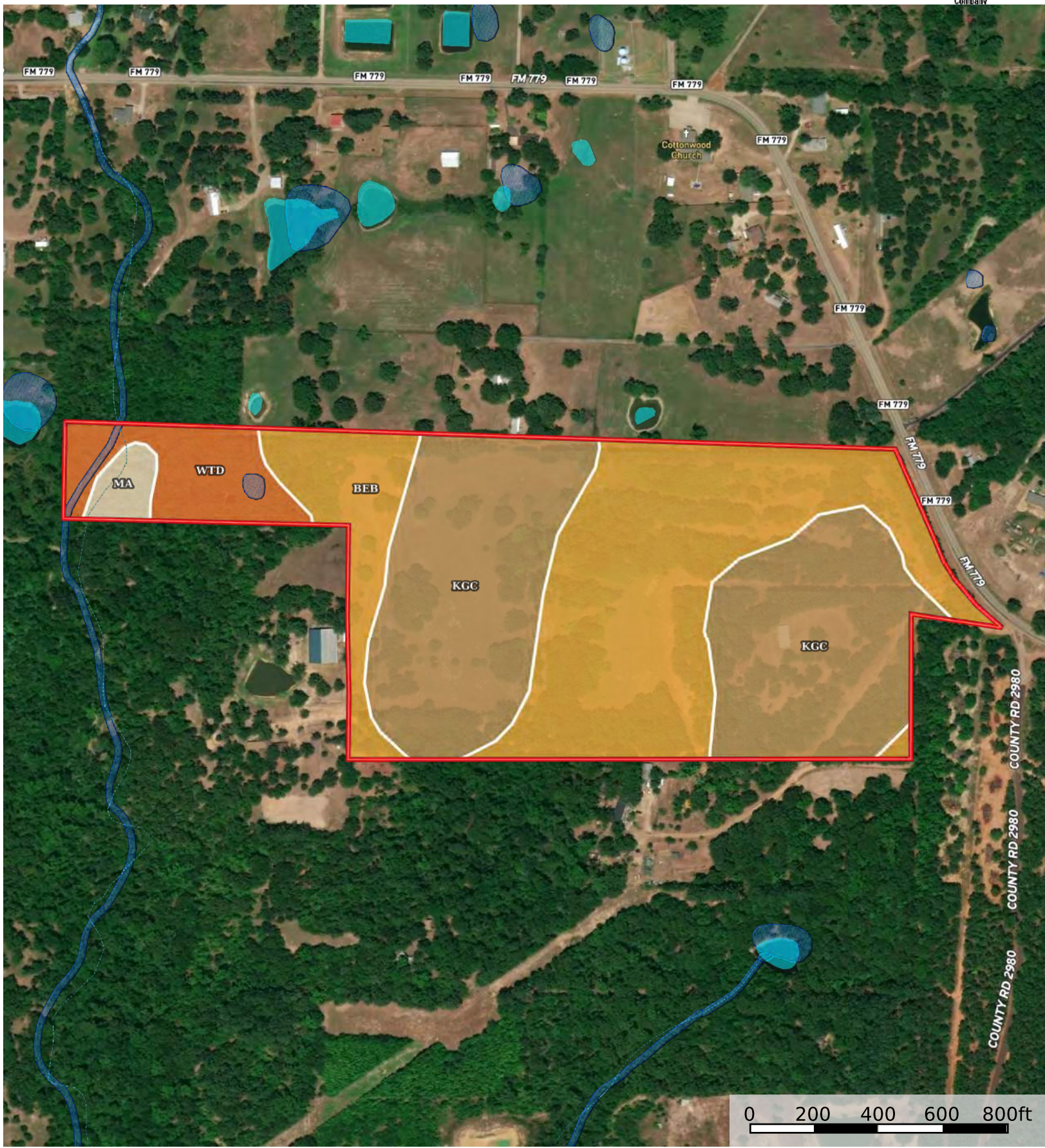


Recreational Land for Sale in East Texas 140 Private Road

Wood County, Texas, 47 AC +/-



|  Boundary 47.05 ac

SOIL CODE	SOIL DESCRIPTION	ACRES	%	CPI	NCCPI	CAP
KgC	Kirvin gravelly fine sandy loam, 2 to 8 percent slopes	21.47	45.64	0	61	4e
BeB	Bernaldo fine sandy loam, 1 to 3 percent slopes	20.96	44.56	0	71	2e
WtD	Woodtell loam, 5 to 15 percent slopes	3.71	7.89	0	61	6e
Ma	Manco loam, frequently flooded	0.91	1.93	0	37	5w
TOTALS		47.05(*)	100%	-	65.0	3.29

(*) Total acres may differ in the second decimal compared to the sum of each acreage soil. This is due to a round error because we only show the acres of each soil with two decimal.

