



**Hawkeye Farm
Mgmt & Real Estate**

Recreational & Hunting Tract with Investment Potential

18292 200th Avenue, Centerville, IA 52544

Price: \$333,500

Acres: 58 +/-

Price/Acre: \$5,750



PROPERTY DETAILS

- Prime Hunting Habitat
- Approximately 30 Open Acres with a CSR2 Rating of 50
- Potential for Conversion to Cash Crops, Alfalfa Hay, or Large Food Plots
- Building & Investment Opportunities
- Ideal for a Hobby Farm, Start-Up Piece, or Pasture
- Annual Taxes \$864

CONTACT US



**Hawkeye
Farm Mgmt &
Real Estate**



(641) 932-7796



Hawkeye@UCIowa.com



www.UCIowa.com



1010 S Clinton, Albia, IA 52531



STEVE HANSON

Realtor ®

(641) 799-2449

IowaSCH@Gmail.com

Ryan Ammons, Broker, Licensed in Iowa. Alan Ammons, Broker Associate, Licensed in Iowa & Missouri. All Agents Licensed in Iowa. The above information, although believed to be accurate, is not warranted or guaranteed by the owner, listing firm, or listing agent.



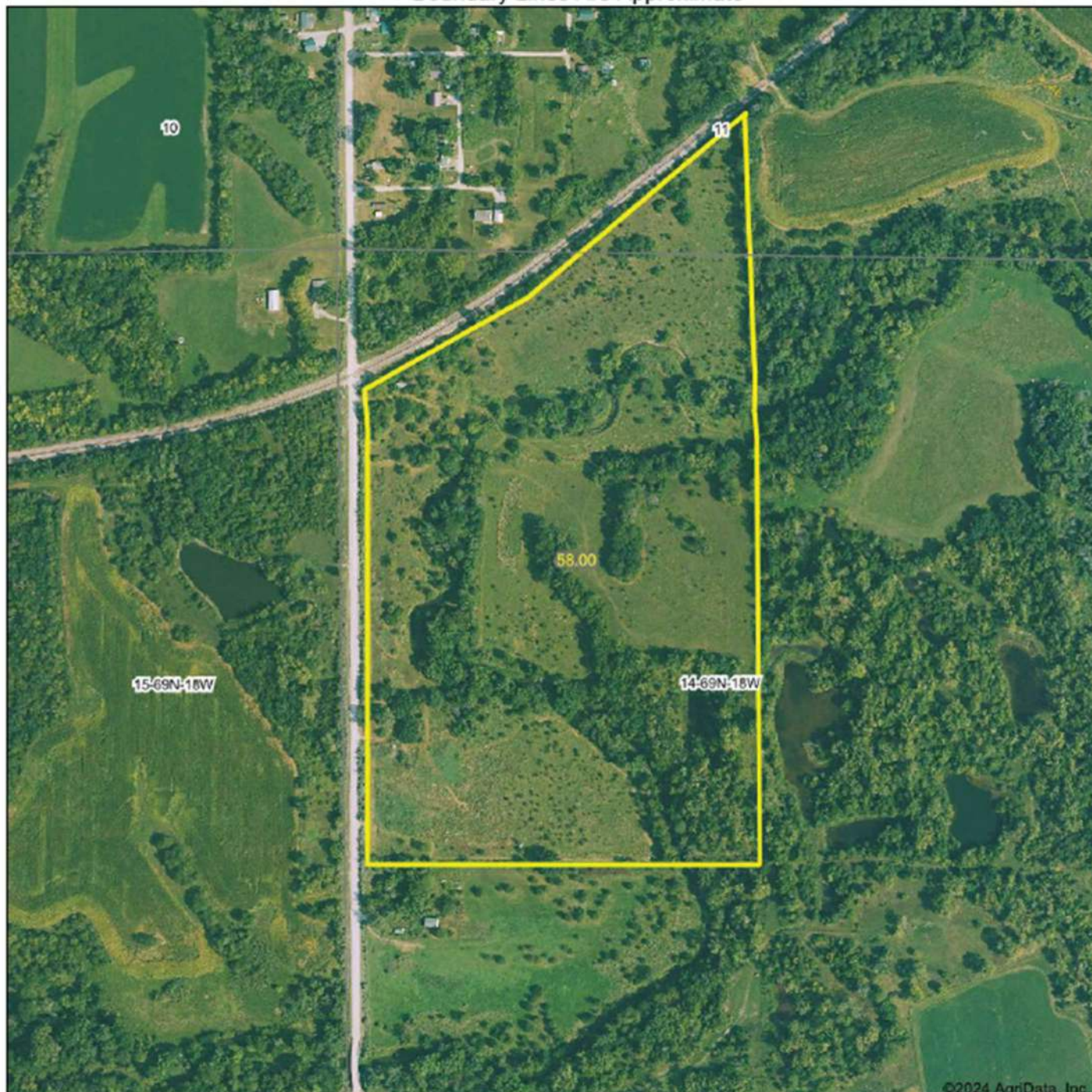
PROPERTY MAP



**Hawkeye
Farm Mgmt &
Real Estate**

Aerial Map

Boundary Lines Are Approximate



©2024 AgriData, Inc.

Hawkeye Farm Mgmt & Real Estate



Boundary Center: 40° 46' 52.45, -92° 54' 13.88

0ft 511ft 1021ft

**14-69N-18W
Appanoose County
Iowa**



Maps Provided By:
surety
CUSTOMER-ONLINE MAPPING
© AgriData, Inc. 2023 www.AgriDataInc.com

8/13/2024