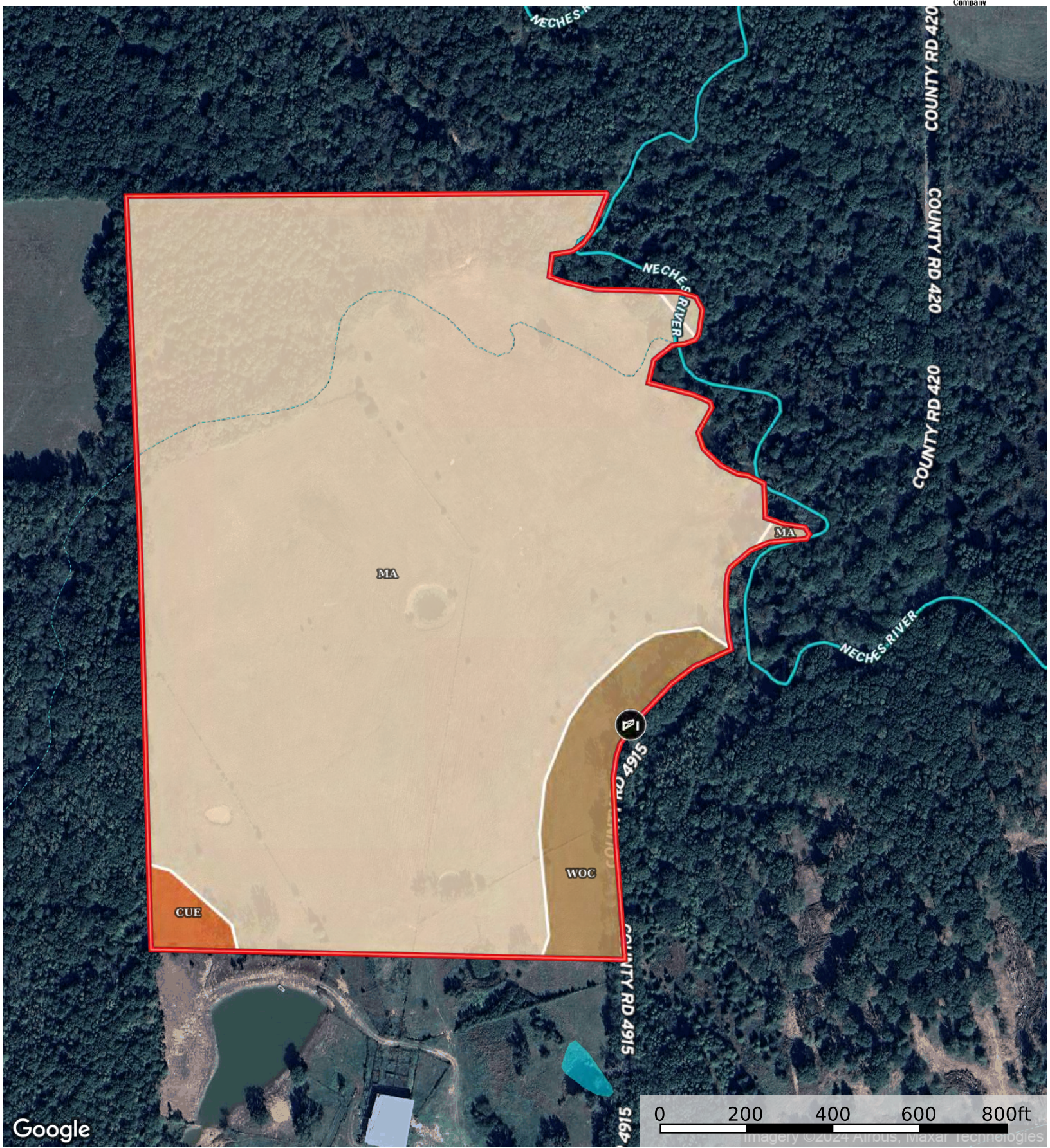


Neches Riverfront Land for Sale near Ben Wheeler TX

Van Zandt County, Texas, 49.285 AC +/-



Google

- Gate
- Boundary
- Stream, Intermittent
- River/Creek
- Water Body

Boundary 49.27 ac

SOIL CODE	SOIL DESCRIPTION	ACRES	%	CPI	NCCPI	CAP
Ma	Mattex loam, 0 to 1 percent slopes, frequently flooded	45.69	92.75	0	66	5w
WoC	Wolfpen loamy fine sand, 1 to 5 percent slopes	2.96	6.01	0	55	3e
CuE	Cuthbert fine sandy loam, 8 to 20 percent slopes	0.62	1.26	0	59	6e
TOTALS		49.27(*)	100%	-	65.26	4.89

(*) Total acres may differ in the second decimal compared to the sum of each acreage soil. This is due to a round error because we only show the acres of each soil with two decimal.

