



# Monroe County Hunting & Recreational Land

219th Trail, Albia, IA 52531

**Hawkeye Farm  
Mgmt & Real Estate**

**Price:** \$795,000

**Acres:** 150 +/-

**Price/Acre:** \$5,300







## PROPERTY DETAILS

- Diverse Habitat & Sprawling Timber
- 58 CRP Acres Earning \$12,688 Annually
- CRP Contract Expires in 2032
- Great Hunting Opportunities
- Located in an area known for Whitetail Hunting
- Annual Taxes \$1,640 Estimated

## CONTACT US



**Hawkeye  
Farm Mgmt &  
Real Estate**

 (641) 932-7796  
 [Hawkeye@UClowa.com](mailto:Hawkeye@UClowa.com)  
 [www.UClowa.com](http://www.UClowa.com)  
 1010 S Clinton  
 Albia, IA 52531



**RYAN AMMONS**  
(641) 777- 2955

[Ryan@UClowa.com](mailto:Ryan@UClowa.com)



**NATE AMMONS**  
(641) 777-2861

[Nate@UClowa.com](mailto:Nate@UClowa.com)

Alan Ammons, Broker, Licensed in Iowa & Missouri. All Agents Licensed in Iowa. The above information, although believed to be accurate, is not warranted or guaranteed by the owner, listing firm, or listing agent.

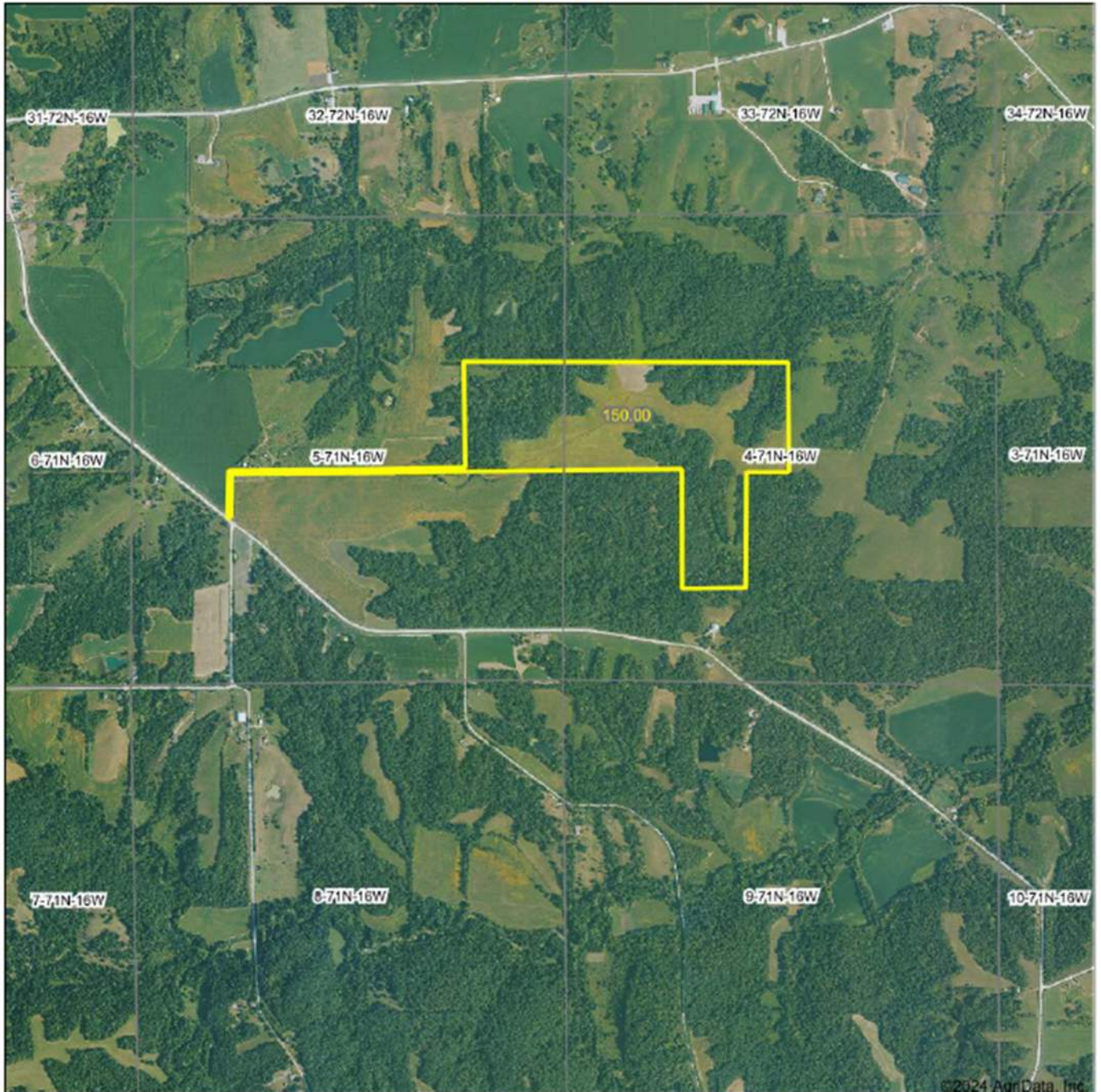


# PROPERTY MAP



Hawkeye Farm Mgmt & Real Estate

Aerial Map  
Boundary Lines Are Approximate



©2024 AgriData, Inc.

Hawkeye Farm Mgmt & Real Estate



22 N Main, Alto IA Phone: 646-850-7796  
Email: hawkeye@hawkeye.com  
Or visit: www.acewa.com  
www.hawkeyefarm.com

Boundary Center: 40° 58' 41.85, -92° 43' 7.73

0ft 1904ft 3808ft

5-71N-16W  
Monroe County  
Iowa



Maps Provided By:



© AgriData, Inc. 2023 www.AgriData.com

9/30/2024