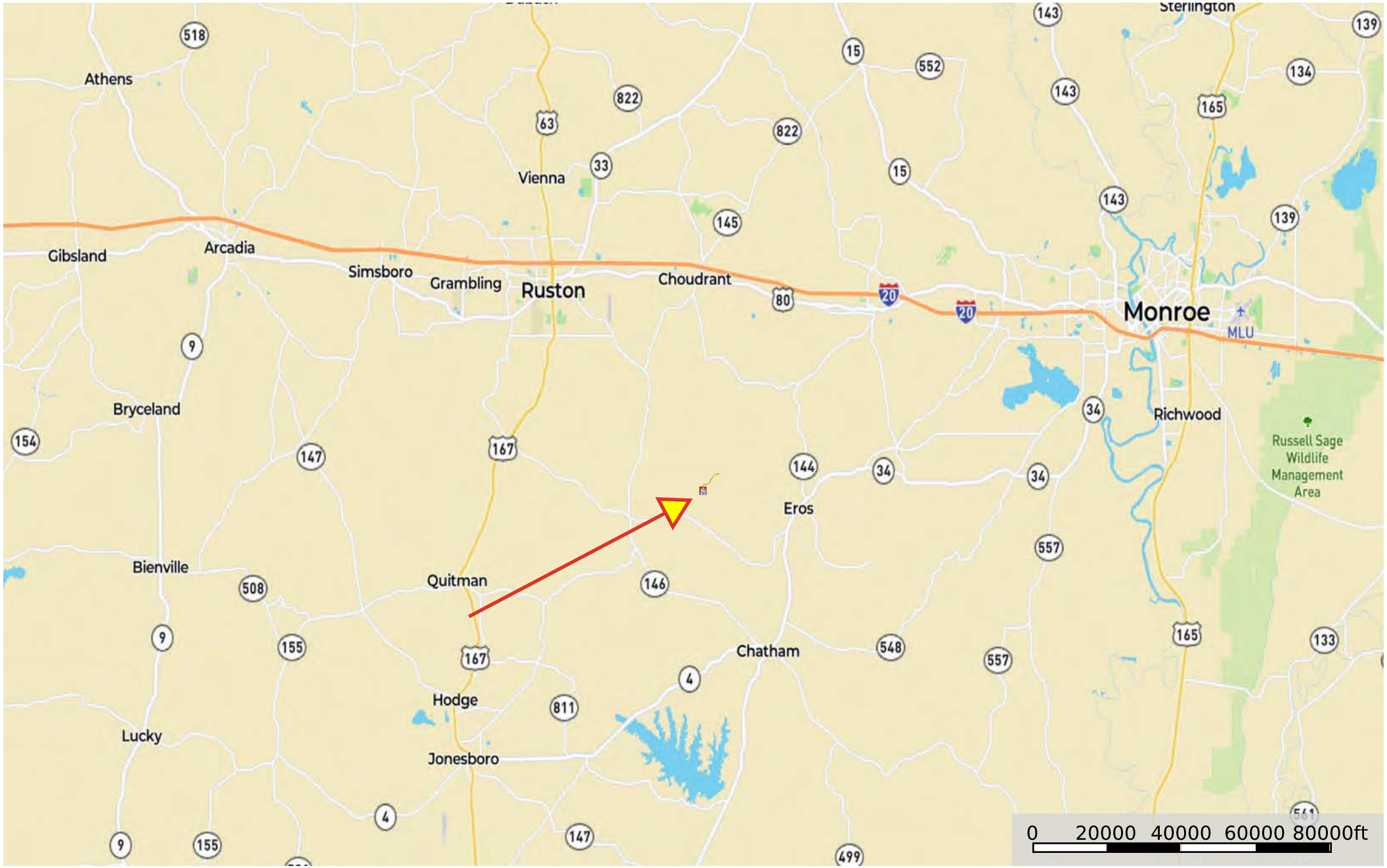
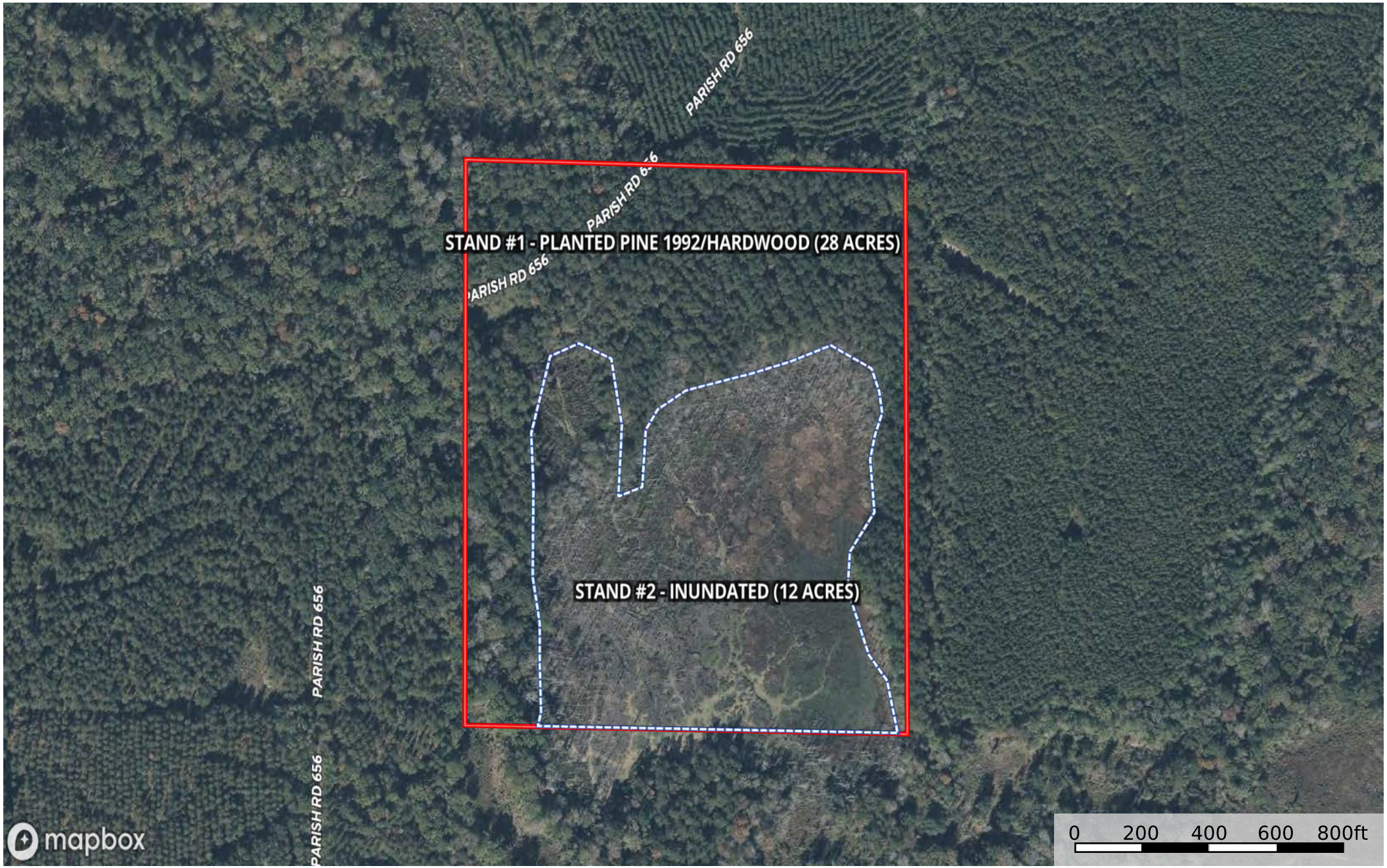


AOE Tract 3

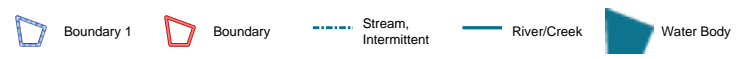
Jackson Parish, Louisiana, 40 AC +/-

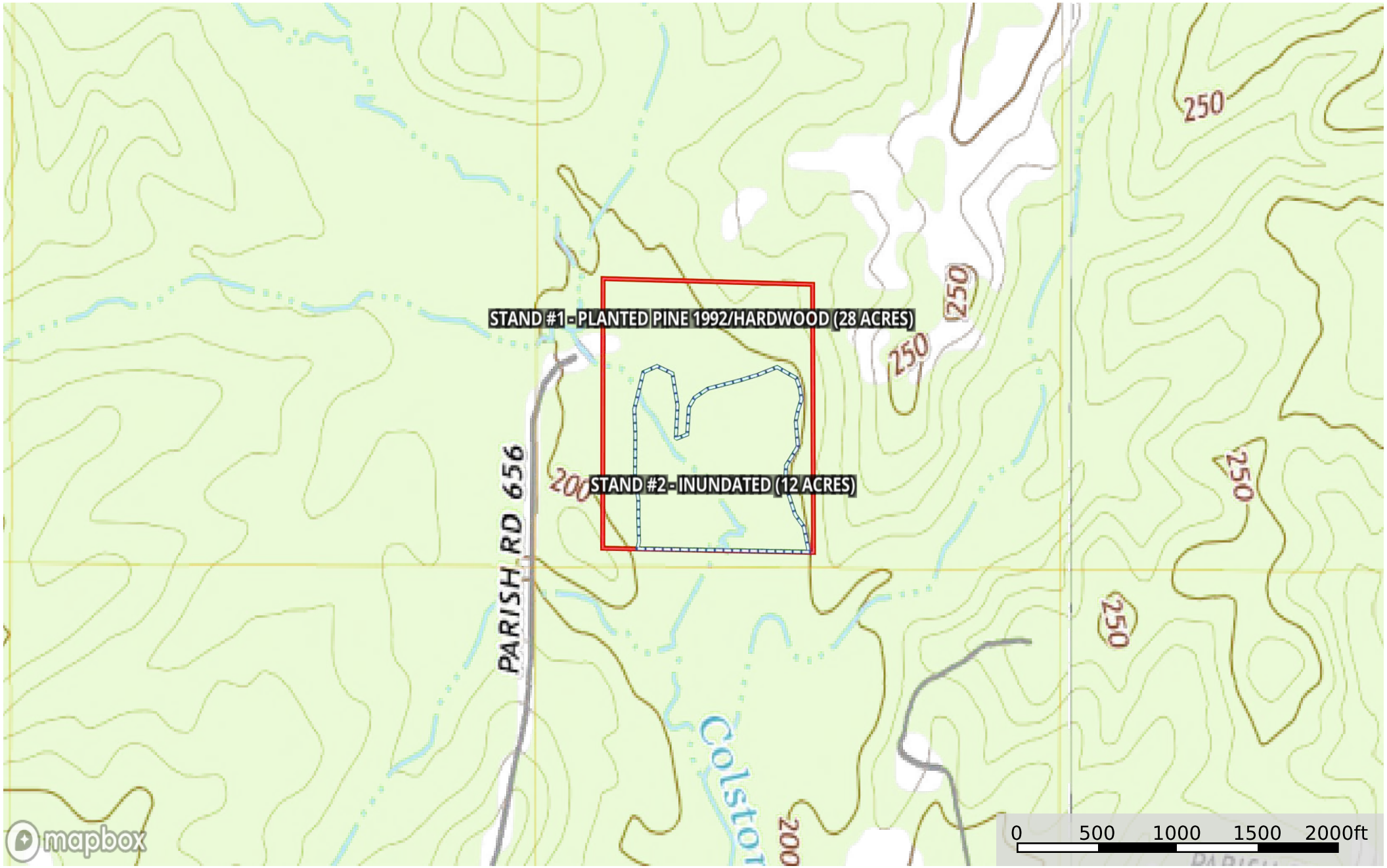


- Stream
- Road / Trail
- Boundary 1
- Pond / Tank
- Boundary



 Boundary 1  Boundary





Boundary 1 Boundary

|  Boundary 41.3 ac

| SOIL CODE | SOIL DESCRIPTION | ACRES | % | CPI | NCCPI | CAP |
|-----------|---|---------|-------|-----|-------|------|
| GYA | Guyton-Ouachita-Ochlockonee association, frequently flooded | 39.54 | 95.74 | 0 | 46 | 5w |
| BRE | Briley loamy fine sand, 5 to 12 percent slopes | 1.14 | 2.76 | 0 | 54 | 4e |
| ChB | Cahaba fine sandy loam, 1 to 3 percent slopes | 0.62 | 1.5 | 0 | 66 | 2e |
| TOTALS | | 41.3(*) | 100% | - | 46.52 | 4.93 |

(*) Total acres may differ in the second decimal compared to the sum of each acreage soil. This is due to a round error because we only show the acres of each soil with two decimal.

