



## Wapello County Hunting & Income-Producing Farm

194th Avenue, Ottumwa, IA 52501

**Hawkeye Farm  
Mgmt & Real Estate**

**Price:** \$868,250

**Acres:** 151 +/-

**Price/Acre:** \$5,750







## PROPERTY DETAILS

- Strong Agricultural Income
- Quality Hunting Land
- Potential Building Site
- Diverse Habitat
- Mature Brush, Thickets & Timbered Draws
- Pasture & Pond
- Recreational Opportunities
- Annual Taxes \$1,728

## CONTACT US



**Hawkeye  
Farm Mgmt &  
Real Estate**

 (641) 932-7796  
 [Hawkeye@UCIowa.com](mailto:Hawkeye@UCIowa.com)  
 [www.UCIowa.com](http://www.UCIowa.com)  
 1010 S Clinton  
Albia, IA 52531



**RYAN AMMONS**  
(641) 777- 2955

[Ryan@UCIowa.com](mailto:Ryan@UCIowa.com)



**NATE AMMONS**  
(641) 777-2861

[Nate@UCIowa.com](mailto:Nate@UCIowa.com)



Ryan Ammons, Broker, Licensed in Iowa. Alan Ammons, Broker Associate, Licensed in Iowa & Missouri. All Agents Licensed in Iowa. The above information, although believed to be accurate, is not warranted or guaranteed by the owner, listing firm, or listing agent.

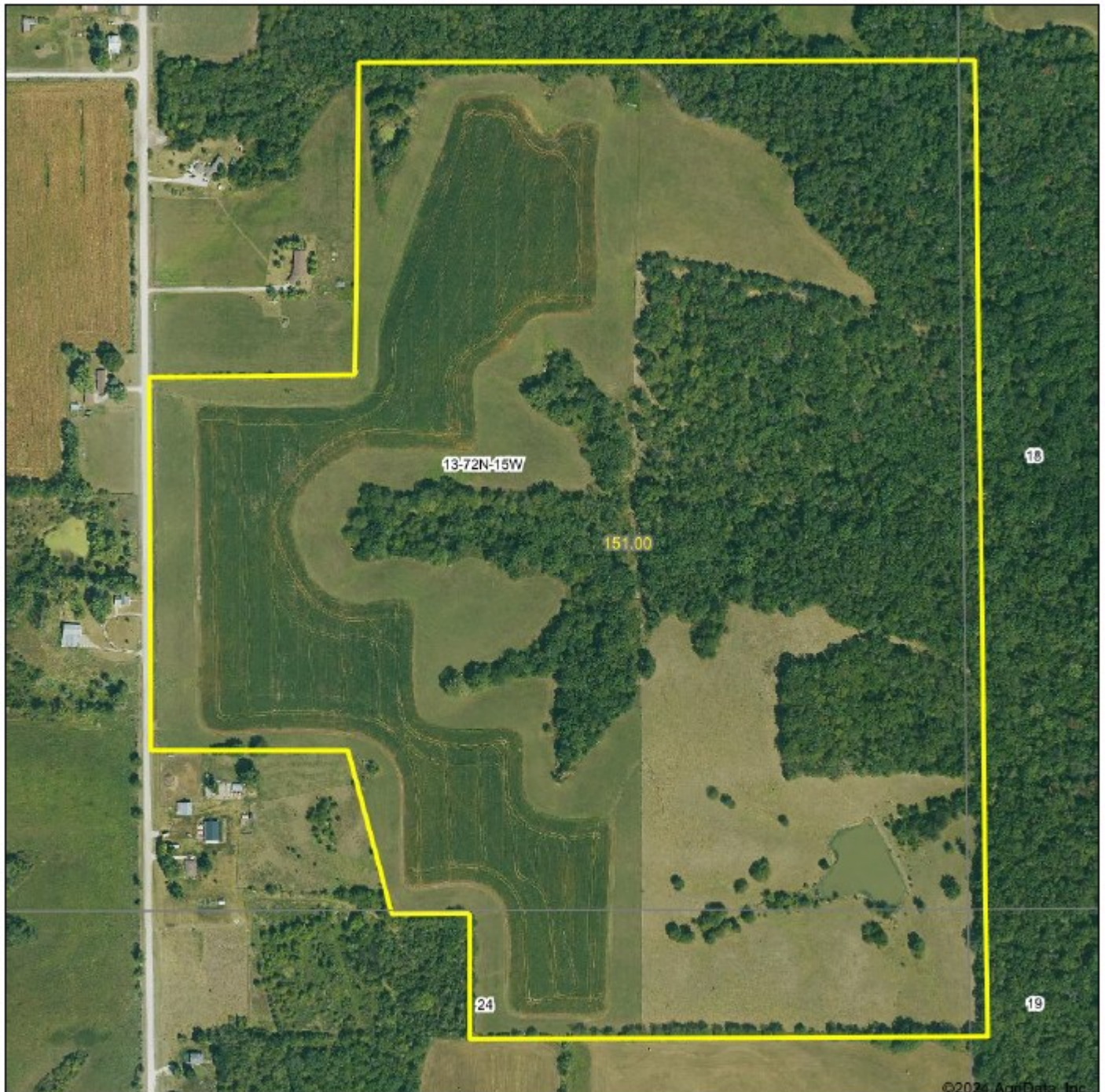


# PROPERTY MAP



**Hawkeye  
Farm Mgmt &  
Real Estate**

**Aerial Map**  
Boundary Lines Are Approximate



©2024 AgriData, Inc.

**Hawkeye Farm Mgmt & Real Estate**



22 N Main, Albia IA Phone: 681-933-7799  
Email: hawkeye@hawkeye.com  
On the web: www.hawkeye.com  
www.hawkeyefarm.com

Boundary Center: 41° 2' 1.76, -92° 31' 46.29

0ft 488ft 975ft

**13-72N-15W**  
**Wapello County**  
**Iowa**



Maps Provided By:  
 **surety**  
CUSTOMER ONLINE MAPPING  
© AgriData, Inc. 2023 www.AgriDataInc.com

12/26/2024