



Scott Campbell
scottcampbell050@gmail.com
Office: (601) 250-0017
Cell: (601) 248-4595
SouthernStatesRealty.com



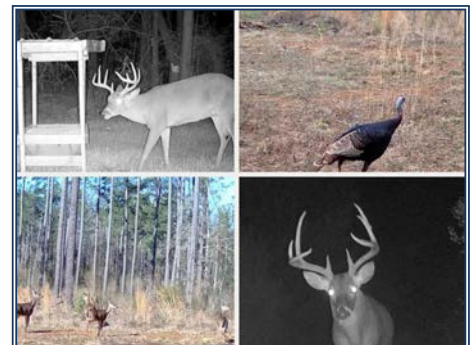
Southern States Realty



80 acres of prime hunting land for sale in NW Amite County MS. on a small low traffic paved road. It has about 1400 feet of paved road frontage and is a great hunting and recreational land tract with interior roads, food plots, mature timber, hardwood bottom and box stands. Property has a great stand of 17 year old row planted pine covering approximately 70 acres and there is also about 10 acres of big mature hardwood bottomland. This premier hunting tract is located in Amite County MS, which is known for its mature whitetail deer population, big rack bucks, and low property taxes is ready and set up to hunt. For the turkey hunter, the property also has a great turkey population with mature gobblers. If you are looking for a nice recreational land tract with significant timber value and hunting, call us today. Its located approximately 10 miles west of McComb, MS and is an easy drive from Interstate 55. McComb is a medium size town with many restaurants, grocery stores and nightlife. Would make a great location for a family hunting camp or recreational location. The property is also perfect for ATV riding, hiking or just enjoying the outdoor life. The small low traffic paved road offers quiet and peaceful seclusion both day and night. The boundaries have been surveyed and well marked and the acreage has been verified. There are 4 wheeler trails throughout and around the property lines. Call today for a private viewing of one of the nicest tracts you will find on the market today!!

Burris Road, Smithdale, MS

31.274580, -90.663049 GPS



\$399,000

80± Acres
MLS #144330

