



Marion County Pasture Farm with Home

950 Virginia Street, Columbia, IA 50057

**Hawkeye Farm
Mgmt & Real Estate**

Price: \$550,000

Bedrooms: 3

Acres: 73 +/-

Bathrooms: 1 3/4



CONTACT US



**Hawkeye
Farm Mgmt &
Real Estate**



(641) 932-7796



Hawkeye@UClowa.com



www.UClowa.com



1010 S Clinton
Albia, IA 52531



RYAN AMMONS

(641) 777- 2955

Ryan@UClowa.com



NATE AMMONS

(641) 777-2861

Nate@UClowa.com

Alan Ammons, Broker, Licensed in Iowa & Missouri. All Agents Licensed in Iowa. The above information, although believed to be accurate, is not warranted or guaranteed by the owner, listing firm, or listing agent.

PROPERTY DETAILS & PICTURES



**Hawkeye
Farm Mgmt &
Real Estate**

- Well Maintained and Established Combination Farm
- Turn-Key Opportunity - Quality Acreage with a Beautifully Remodeled Home
 - ⇒ 3 Bedrooms (1 Main Level, 2 Upper)
 - ⇒ 2 Bathrooms (Full Main Level, 3/4 Upper Level)
 - ⇒ Formal Dining Room
 - ⇒ 4 Seasons Nook with Laundry & Fireplace
 - ⇒ Elegant Kitchen with Stainless Steel Appliances, Granite Countertops, Custom Tile Backsplash & Maple Soft-Close Cabinets
 - ⇒ Hardwood & Tile Flooring
 - ⇒ 3/4 Tongue & Groove Wainscott / Wall Covering
- Located just off Paved Highway 14 - Multiple Access Points
- Top-Notch Grazing Conditions
- Separate Paddocks for Rotational Grazing & Timbered Pasture Opinions
- Ample Water - 2 Ponds
- Functional Sorting Facilities & Fencing
- Mid American Energy Average Electric \$44
- 1,000 Gallon Propane Tank
- Septic System & Rural Water
- Annual Taxes \$2,066

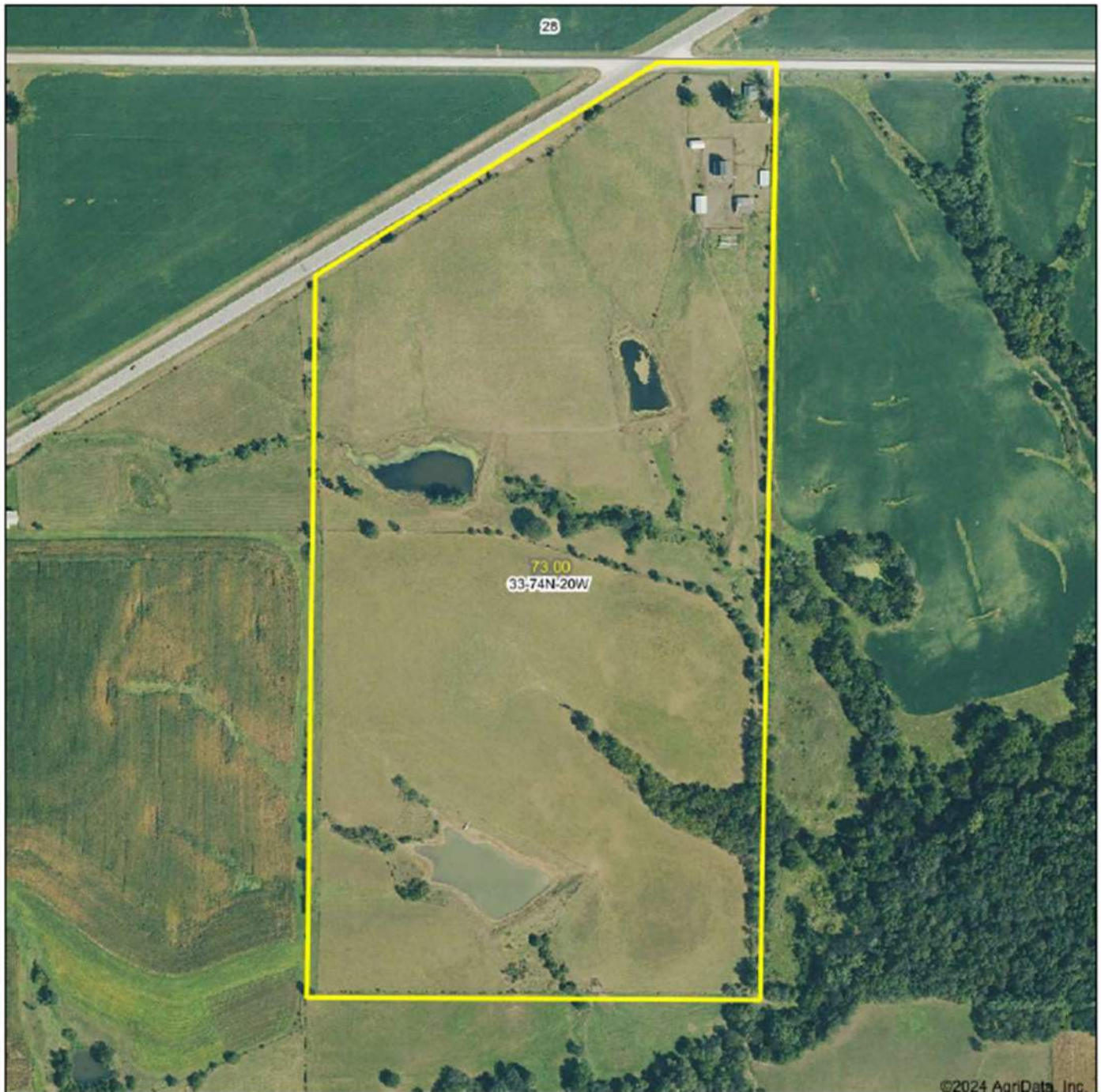


PROPERTY MAP



**Hawkeye
Farm Mgmt &
Real Estate**

Aerial Map
Boundary Lines Are Approximate



©2024 AgriData, Inc.

Hawkeye Farm Mgmt & Real Estate



Boundary Center: 41° 10' 18.69, -93° 10' 5.93

0ft 444ft 888ft

33-74N-20W
Marion County
Iowa



Maps Provided By:
 surety
CUSTOMER ONLINE MAPPING
© AgriData, Inc. 2023 www.AgrIDataInc.com

10/29/2024