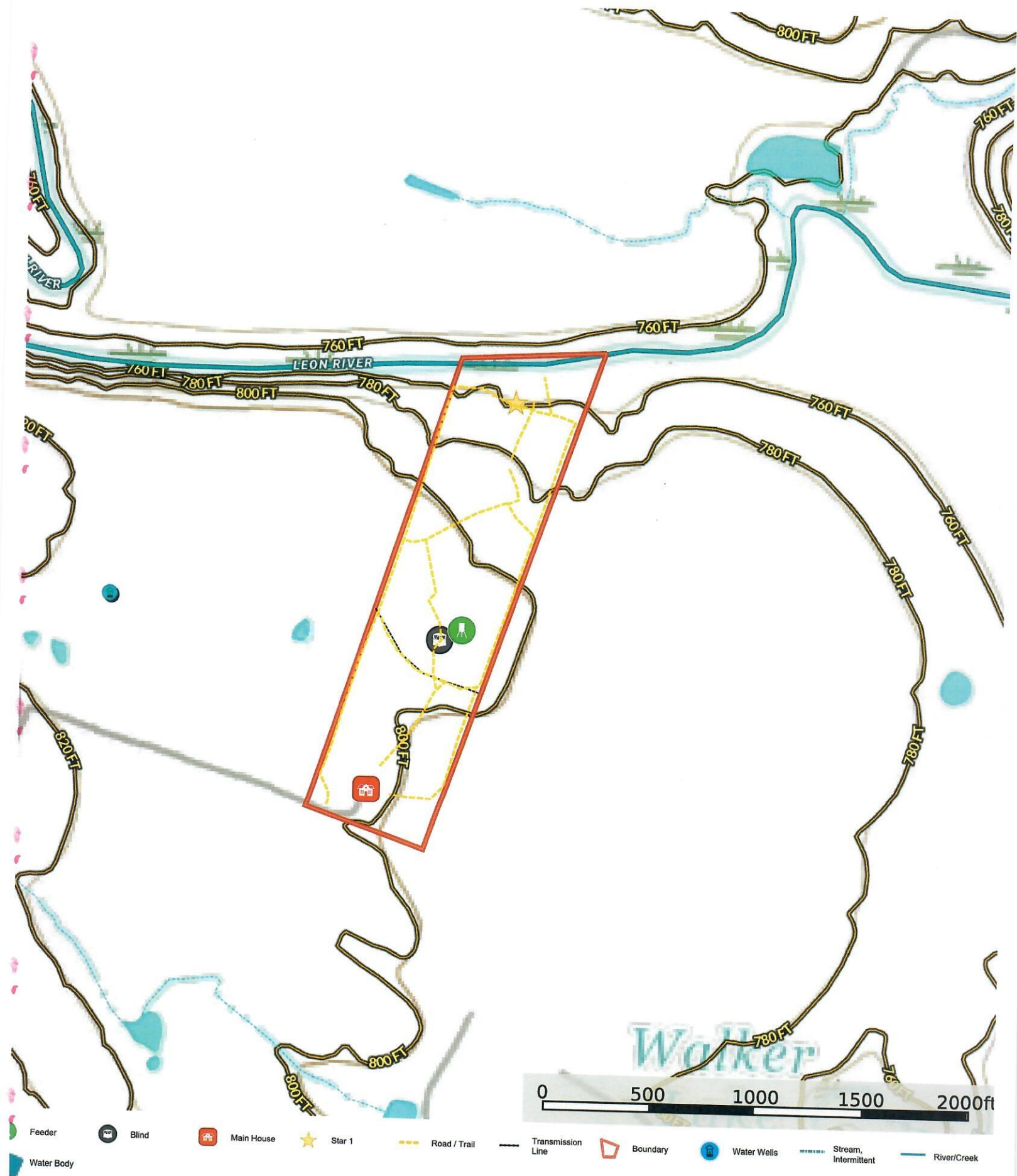


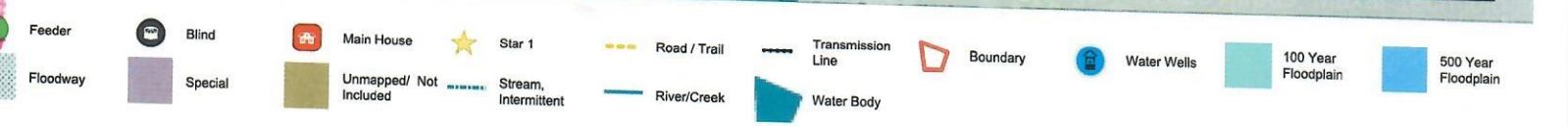
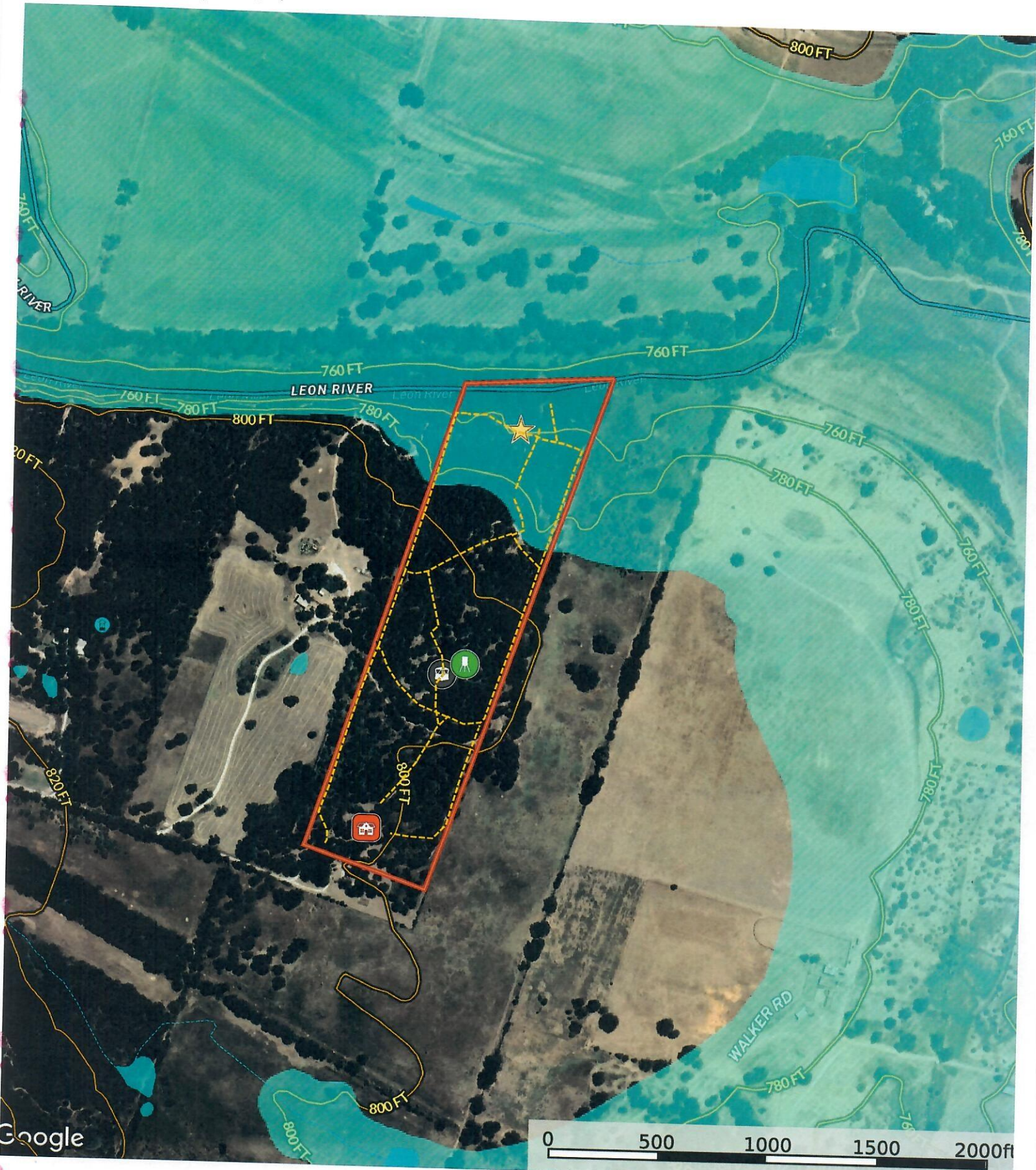


- Feeder
- Blind
- Main House
- Star 1
- Road / Trail
- Transmission Line
- Boundary
- Water Wells
- Stream, Intermittent
- River/Creek
- Water Body













Google

- Feeder
- Blind
- Main House
- Star 1
- Road / Trail
- Transmission Line
- Boundary
- Water Wells
- Stream, Intermittent
- River/Creek
- Water Body



## Boundary 33.18 ac

SOIL CODE	SOIL DESCRIPTION	ACRES	%	CPI	NCCPI	CAP
DnB	Desan fine sand, 1 to 3 percent slopes	20.91	63.02	0	27	3s
BaB	Bastsil fine sandy loam, 1 to 3 percent slopes	6.68	20.13	0	51	2e
MnB	Minwells fine sandy loam, warm, 1 to 3 percent slopes	3.29	9.92	0	48	3e
Bs	Bosque clay loam, 0 to 1 percent slopes, occasionally flooded	2.3	6.93	0	59	2w
TOTALS		33.18(*)	100%	-	36.13	2.73

(\*) Total acres may differ in the second decimal compared to the sum of each acreage soil. This is due to a round error because we only show the acres of each soil with two decimal.

### Capability Legend

Increased Limitations and Hazards

Decreased Adaptability and Freedom of Choice Users

Land, Capability

	1	2	3	4	5	6	7	8
'Wild Life'	•	•	•	•	•	•	•	•
Forestry	•	•	•	•	•	•	•	
Limited	•	•	•	•	•	•	•	
Moderate	•	•	•	•	•	•		
Intense	•	•	•	•	•			
Limited	•	•	•	•				
Moderate	•	•	•					
Intense	•	•						
Very Intense	•							

### Grazing Cultivation

(c) climatic limitations (e) susceptibility to erosion

(s) soil limitations within the rooting zone (w) excess of water