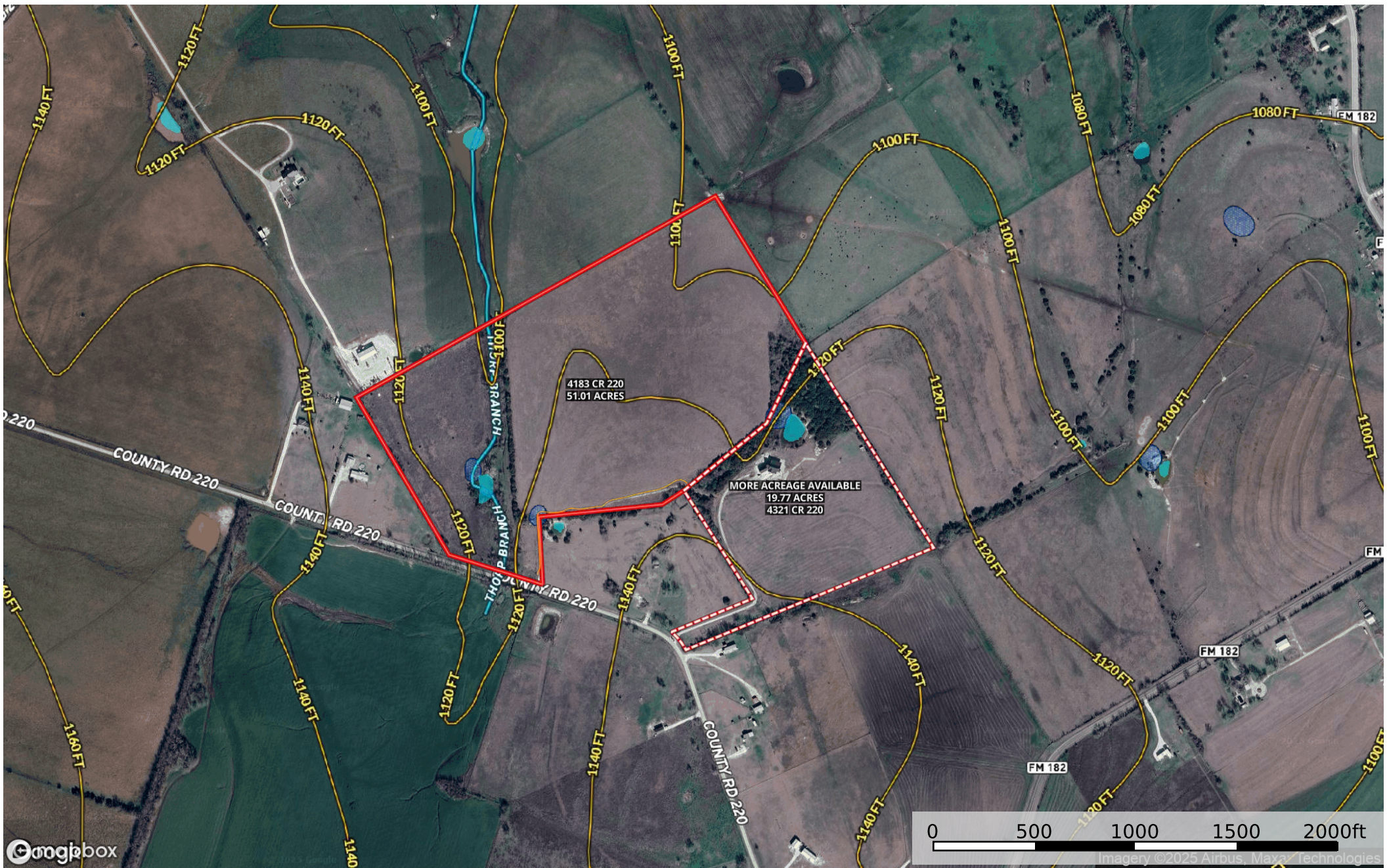


Roberts 4183 CR 220 (51.01 Acres)  
Coryell County, Texas, 51.01 AC +/-



- Track
- Boundary
- Boundary
- 100 Year Floodplain
- 500 Year Floodplain
- Floodway
- Special
- Unmapped/ Not Included
- Wetlands
- Riparian
- Stream, Intermittent
- River/Creek
- Water Body