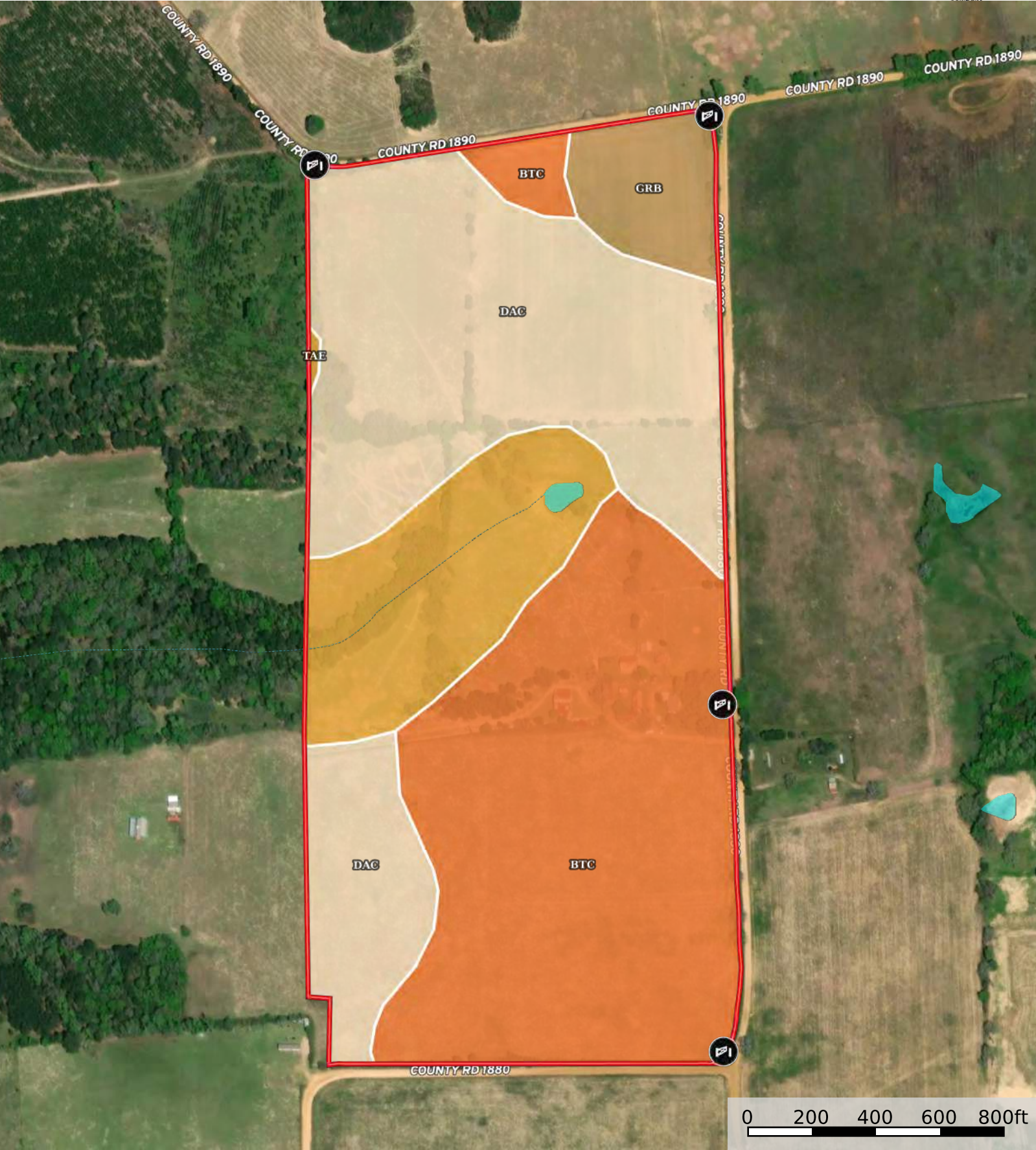


Grapeland TX Ranch for Sale Houston County 78 acres

Houston County, Texas, 78 AC +/-



- Gate
- Boundary
- Stream, Intermittent
- River/Creek
- Water Body

Benjamin Jackson

P: 903-941-3390 <https://investintexasbuyland.com/>

The information contained herein was obtained from sources deemed to be reliable. Land id™ Services makes no warranties or guarantees as to the completeness or accuracy thereof.

|  Boundary 87.51 ac

SOIL CODE	SOIL DESCRIPTION	ACRES	%	CPI	NCCPI	CAP
BtC	Betis loamy fine sand, 1 to 5 percent slopes	36.48	41.69	0	27	4e
DaC	Darco loamy fine sand, 1 to 8 percent slopes	34.08	38.94	0	32	3s
TaE	Tenaha loamy fine sand, 5 to 15 percent slopes	12.39	14.16	0	52	6e
GrB	Grapeland fine sand, 1 to 4 percent slopes	4.56	5.21	0	33	3s
TOTALS		87.51(*)	100%	-	32.8	3.84









(*) Total acres may differ in the second decimal compared to the sum of each acreage soil. This is due to a round error because we only show the acres of each soil with two decimal.

Capability Legend

Increased Limitations and Hazards

Decreased Adaptability and Freedom of Choice Users

Land, Capability

								
	1	2	3	4	5	6	7	8
'Wild Life'	•	•	•	•	•	•	•	•
Forestry	•	•	•	•	•	•	•	
Limited	•	•	•	•	•	•	•	
Moderate	•	•	•	•	•	•		
Intense	•	•	•	•	•			
Limited	•	•	•	•				
Moderate	•	•	•					
Intense	•	•						
Very Intense	•							

Grazing Cultivation

(c) climatic limitations (e) susceptibility to erosion

(s) soil limitations within the rooting zone (w) excess of water