



Slade Priest
 sladepriest1@gmail.com
 Office: (601) 250-0017
 Cell: (601) 888-0094
 SouthernStatesRealty.com



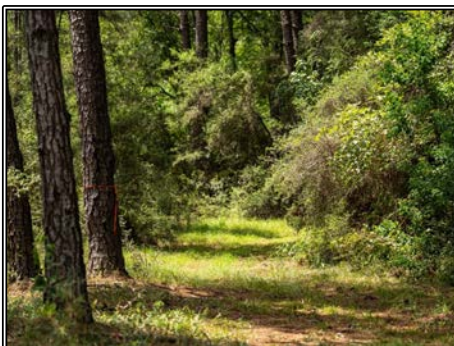
**Southern
States Realty**



Welcome to Clear Lake. Clear Lake is 96+- acres in East Feliciana Parish on highway 960, just 20 minutes from downtown Clinton. Featuring two large lakes and Amite River frontage, Clear Lake is the ultimate waterfront property. Upon pulling in the gate, you are greeted with a gorgeous homesite that overlooks Lake One. There is already a large shop with living quarters up top that would be the perfect place to store large equipment. The living quarters would make for a great guest home for overflow or serve as a great camp if you are not interested in building a home. There is a great trail system in place to easily navigate everywhere on the property. When heading toward the river, you will pass Lake Two. Both lakes are beautiful in their own respects. The current owners have enjoyed fishing and duck hunting on these lakes. The fish beds are abundant and the water activity was constant. When you reach the river on the eastern end of the property, you're greeted with a gorgeous beach bank on the river that would be a great place to spend the day. There are deer tracks everywhere on the property as well as hog tracks. Hunting here would be a cherry on top of some great water recreation. Very few tracts we have ever seen have this much water appeal. If you're interested in a great waterfront property just outside of downtown Clinton, LA, then you need to give Clear Lake a look. Call your favorite realtor today!

1157 LA 960, Clinton, LA

30.769393, -90.853899 GPS



\$625,000

**96± Acres
MLS #144895**



#HUNTINGLANDMAN