

--- Road / Trail

■ Pond / Tank

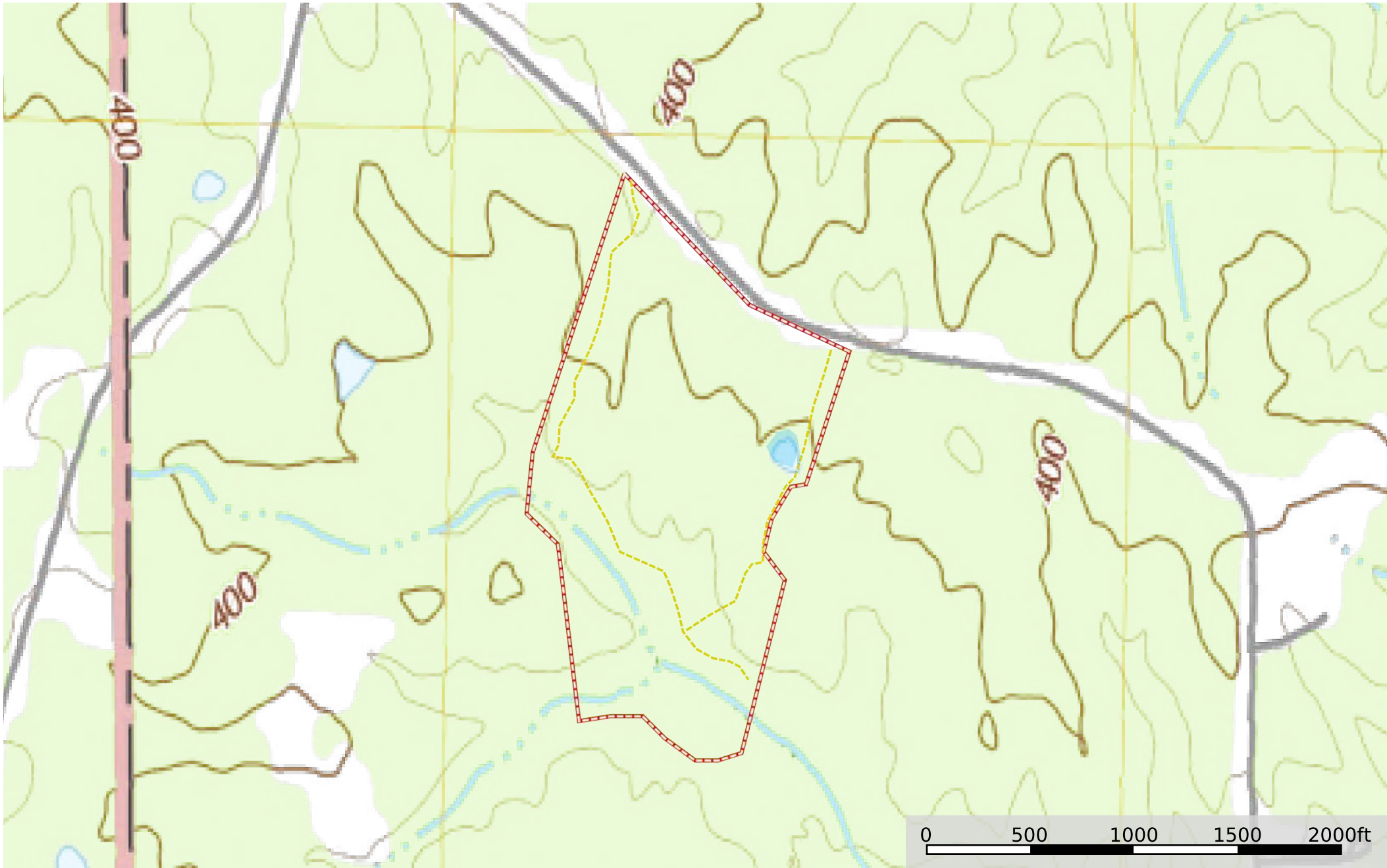
□ Boundary



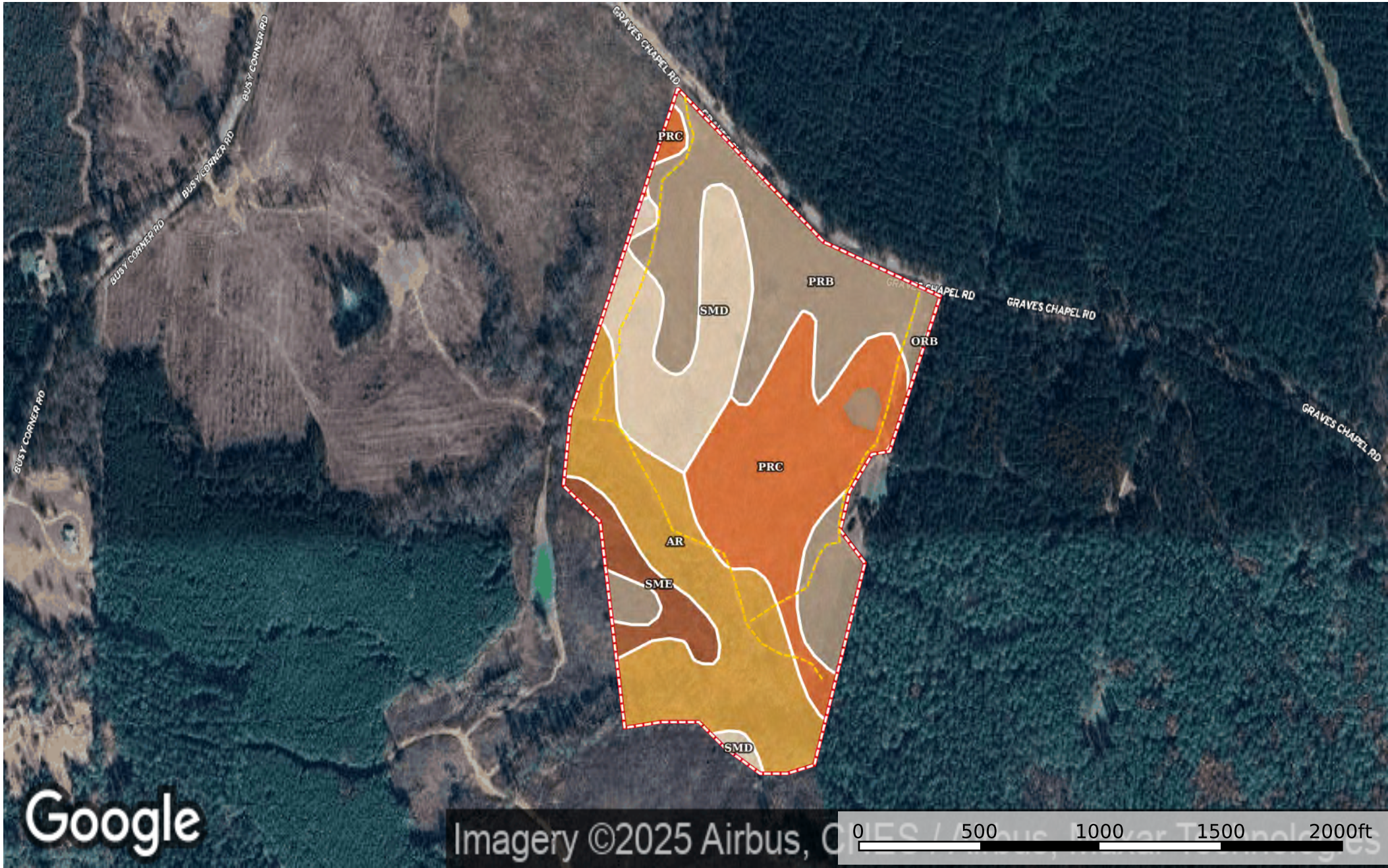




- Road / Trail
- Pond / Tank
- Boundary
- Stream,
Intermittent
- River/Creek
- Water Body



--- Road / Trail Pond / Tank Boundary



--- Road / Trail Pond / Tank Boundary

|  Boundary 48.94 ac

SOIL CODE	SOIL DESCRIPTION	ACRES	%	CPI	NCCPI	CAP
PrB	Providence silt loam, 2 to 5 percent slopes	14.55	29.73	0	49	2e
Ar	Ariel silt loam, 0 to 2 percent slopes, occasionally flooded	12.36	25.26	0	53	2w
PrC	Providence silt loam, 5 to 8 percent slopes	11.9	24.32	0	47	3e
SmD	Smithdale sandy loam, 8 to 12 percent slopes	7.64	15.61	0	53	4e
SmE	Smithdale sandy loam, 12 to 35 percent slopes	2.48	5.07	0	27	7e
OrB	Ora loam, 2 to 5 percent slopes	0.01	0.02	0	41	2e
TOTALS		48.94(*)	100%	-	49.03	2.81









(*) Total acres may differ in the second decimal compared to the sum of each acreage soil. This is due to a round error because we only show the acres of each soil with two decimal.

Capability Legend

Increased Limitations and Hazards

Decreased Adaptability and Freedom of Choice Users

Land, Capability

								
	1	2	3	4	5	6	7	8
'Wild Life'	•	•	•	•	•	•	•	•
Forestry	•	•	•	•	•	•	•	
Limited	•	•	•	•	•	•	•	
Moderate	•	•	•	•	•	•		
Intense	•	•	•	•	•			
Limited	•	•	•	•				
Moderate	•	•	•					
Intense	•	•						
Very Intense	•							

Grazing Cultivation

(c) climatic limitations (e) susceptibility to erosion

(s) soil limitations within the rooting zone (w) excess of water