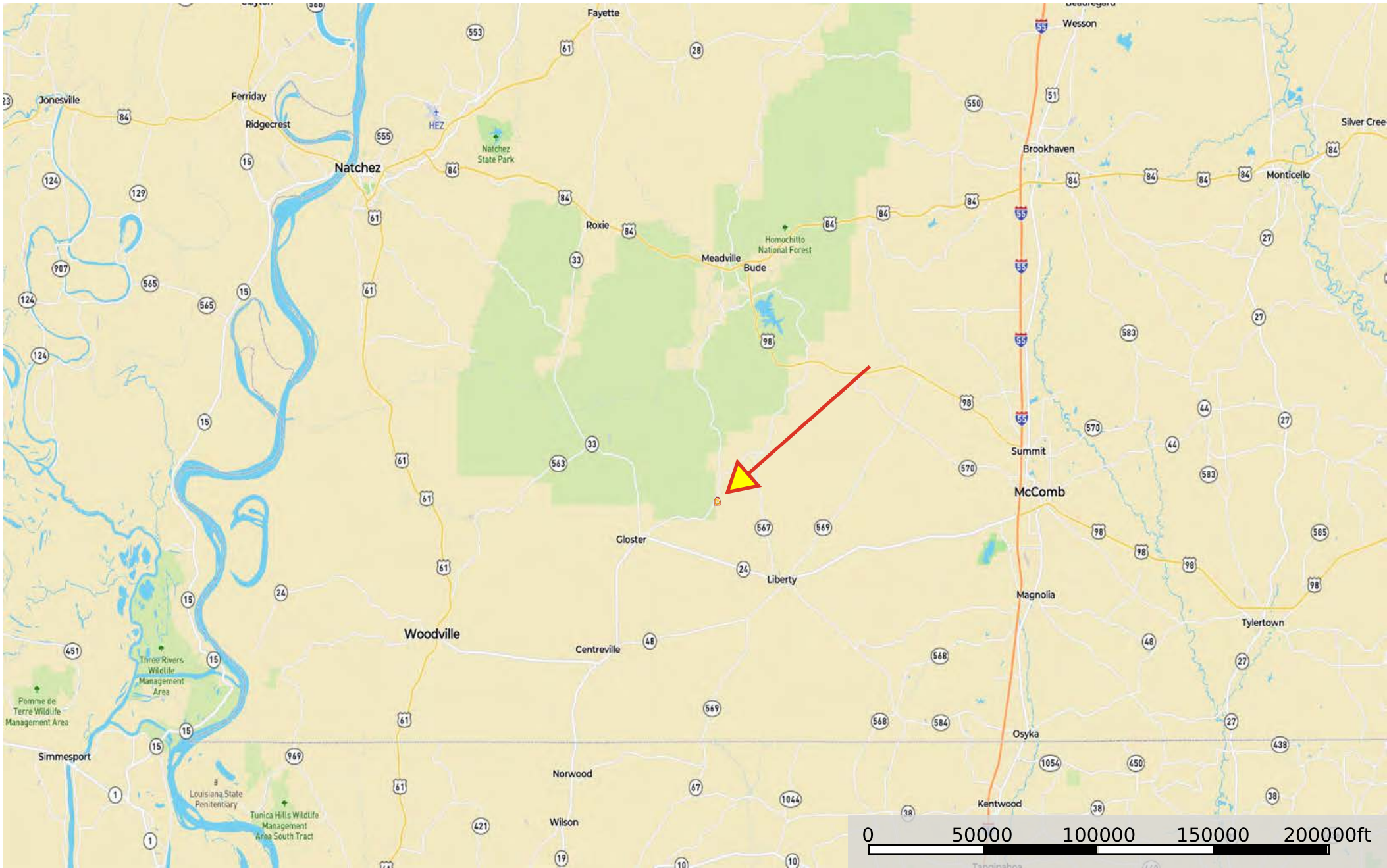


rd 100 ac. Amite County
Mississippi, AC +/-



--- Road / Trail

■ Pond / Tank 1

□ Boundary

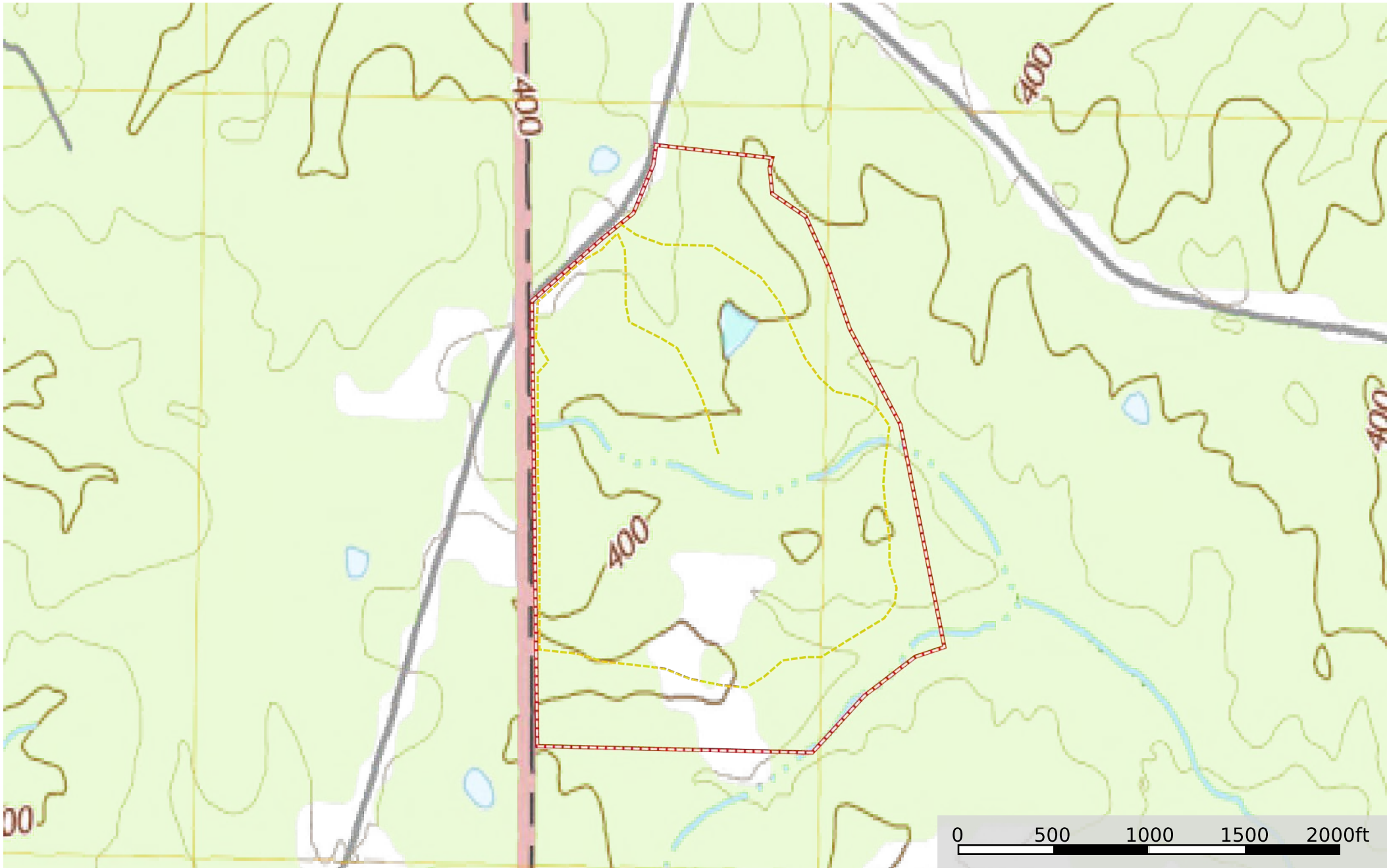




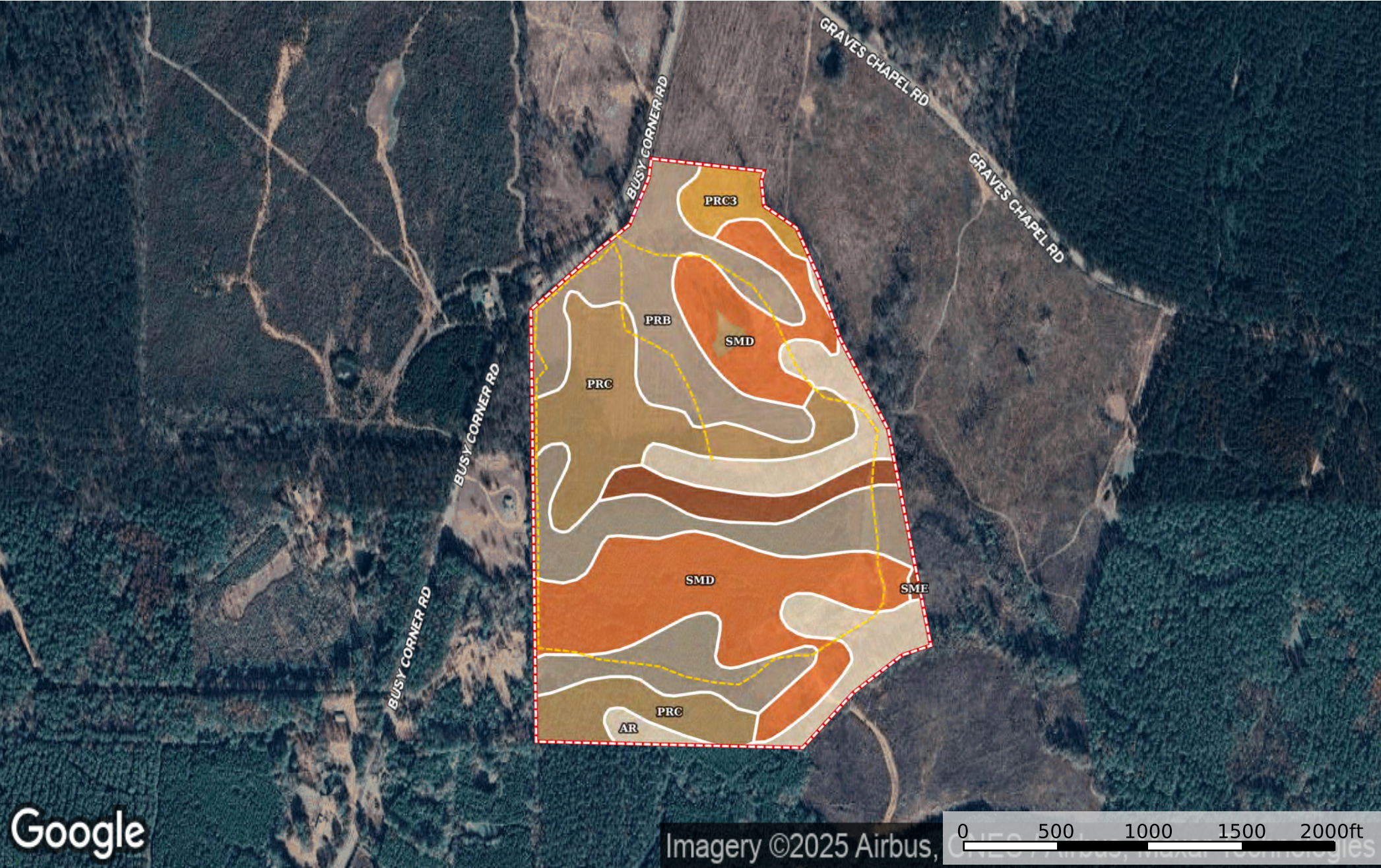
--- Road / Trail Pond / Tank 1 Boundary



- Road / Trail
- Pond / Tank 1
- Boundary
- Stream, Intermittent
- River/Creek
- Water Body



--- Road / Trail Pond / Tank 1 Boundary



--- Road / Trail
Pond / Tank 1
Boundary

|  Boundary 98.52 ac

SOIL CODE	SOIL DESCRIPTION	ACRES	%	CPI	NCCPI	CAP
PrB	Providence silt loam, 2 to 5 percent slopes	32.26	32.74	0	49	2e
SmD	Smithdale sandy loam, 8 to 12 percent slopes	27.43	27.84	0	53	4e
PrC	Providence silt loam, 5 to 8 percent slopes	18.39	18.67	0	47	3e
Ar	Ariel silt loam, 0 to 2 percent slopes, occasionally flooded	12.9	13.09	0	53	2w
SmE	Smithdale sandy loam, 12 to 35 percent slopes	4.49	4.56	0	27	7e
PrC3	Providence silt loam, 5 to 8 percent slopes, severely eroded	3.05	3.1	0	25	4e
TOTALS		98.52(*)	100%	-	48.52	3.03









(*) Total acres may differ in the second decimal compared to the sum of each acreage soil. This is due to a round error because we only show the acres of each soil with two decimal.

Capability Legend

Increased Limitations and Hazards

Decreased Adaptability and Freedom of Choice Users

Land, Capability

								
	1	2	3	4	5	6	7	8
'Wild Life'	•	•	•	•	•	•	•	•
Forestry	•	•	•	•	•	•	•	
Limited	•	•	•	•	•	•	•	
Moderate	•	•	•	•	•	•		
Intense	•	•	•	•	•			
Limited	•	•	•	•				
Moderate	•	•	•					
Intense	•	•						
Very Intense	•							

Grazing Cultivation

(c) climatic limitations (e) susceptibility to erosion

(s) soil limitations within the rooting zone (w) excess of water