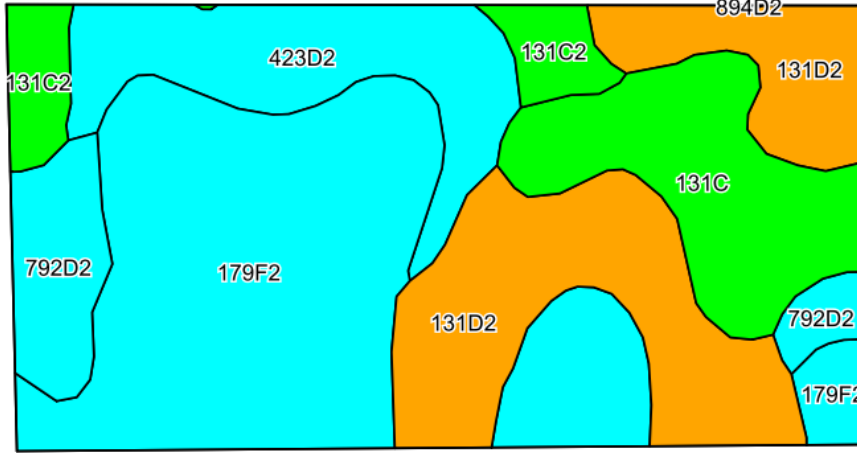


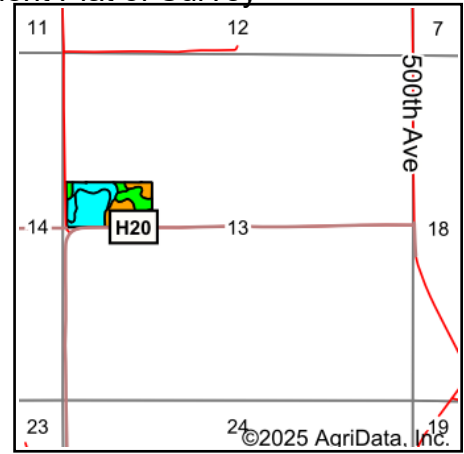
# Soils Map

Boundary Lines Are Approximate - See Retracement Plat of Survey



©2025 AgriData, Inc.

Soils data provided by USDA and NRCS.



State: **Iowa**  
 County: **Lucas**  
 Location: **13-73N-20W**  
 Township: **Pleasant**  
 Acres: **20**  
 Date: **7/15/2025**

**Hawkeye Farm Mgmt & Real Estate**



22 N Main, Albion IA Phone: 641-932-7796  
 Email: [hawkeye@uciowa.com](mailto:hawkeye@uciowa.com)  
 On the web: [www.uciowa.com](http://www.uciowa.com)  
[www.iowawhitetailfarms.com](http://www.iowawhitetailfarms.com)

Maps Provided By:



© AgriData, Inc. 2023

[www.AgriDataInc.com](http://www.AgriDataInc.com)



Area Symbol: IA117, Soil Area Version: 33

Code	Soil Description	Acres	Percent of field	CSR2 Legend	Non-Irr Class *c	CSR2**	CSR	*n NCCPI Corn	*n NCCPI Soybeans
179F2	Gara clay loam, 18 to 25 percent slopes, moderately eroded	7.60	37.9%		Ive	11	13	52	34
131D2	Pershing silty clay loam, 9 to 14 percent slopes, moderately eroded	4.74	23.7%		Ive	38	31	63	53
131C	Pershing silt loam, 5 to 9 percent slopes	2.71	13.6%		Ille	65	49	72	58
423D2	Bucknell silty clay loam, 9 to 14 percent slopes, moderately eroded	2.57	12.8%		Ive	6	13	62	48
792D2	Armstrong clay loam, 9 to 14 percent slopes, moderately eroded	1.39	7.0%		Ive	5	13	58	42
131C2	Pershing silty clay loam, 5 to 9 percent slopes, moderately eroded	0.99	5.0%		Ille	62	45	68	56
Weighted Average					3.82	26.2	23.7	*n 59.8	*n 45.2

\*\*IA has updated the CSR values for each county to CSR2.

\*n: The aggregation method is "Weighted Average using all components"

\*c: Using Capabilities Class Dominant Condition Aggregation Method

Soils data provided by USDA and NRCS.