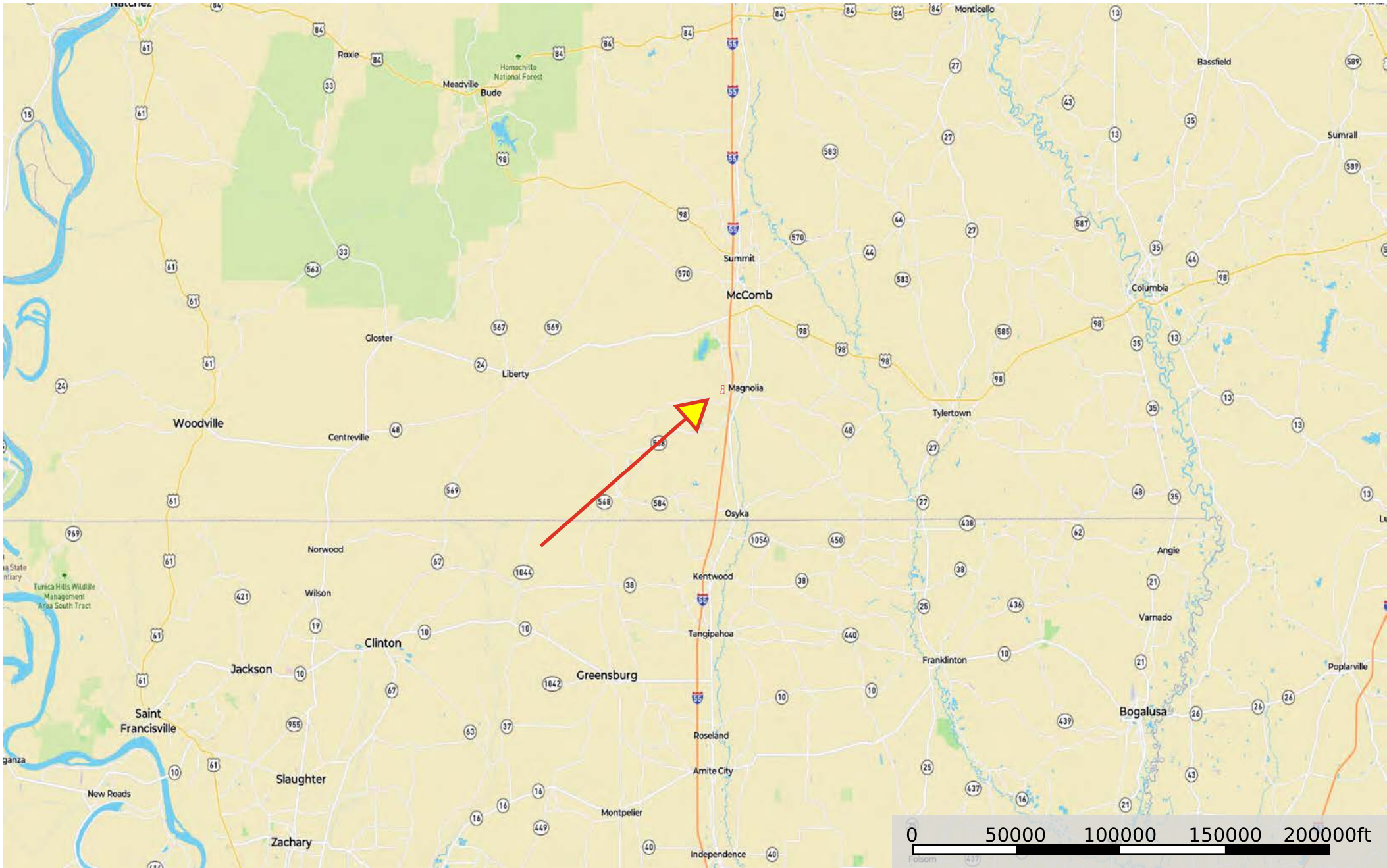



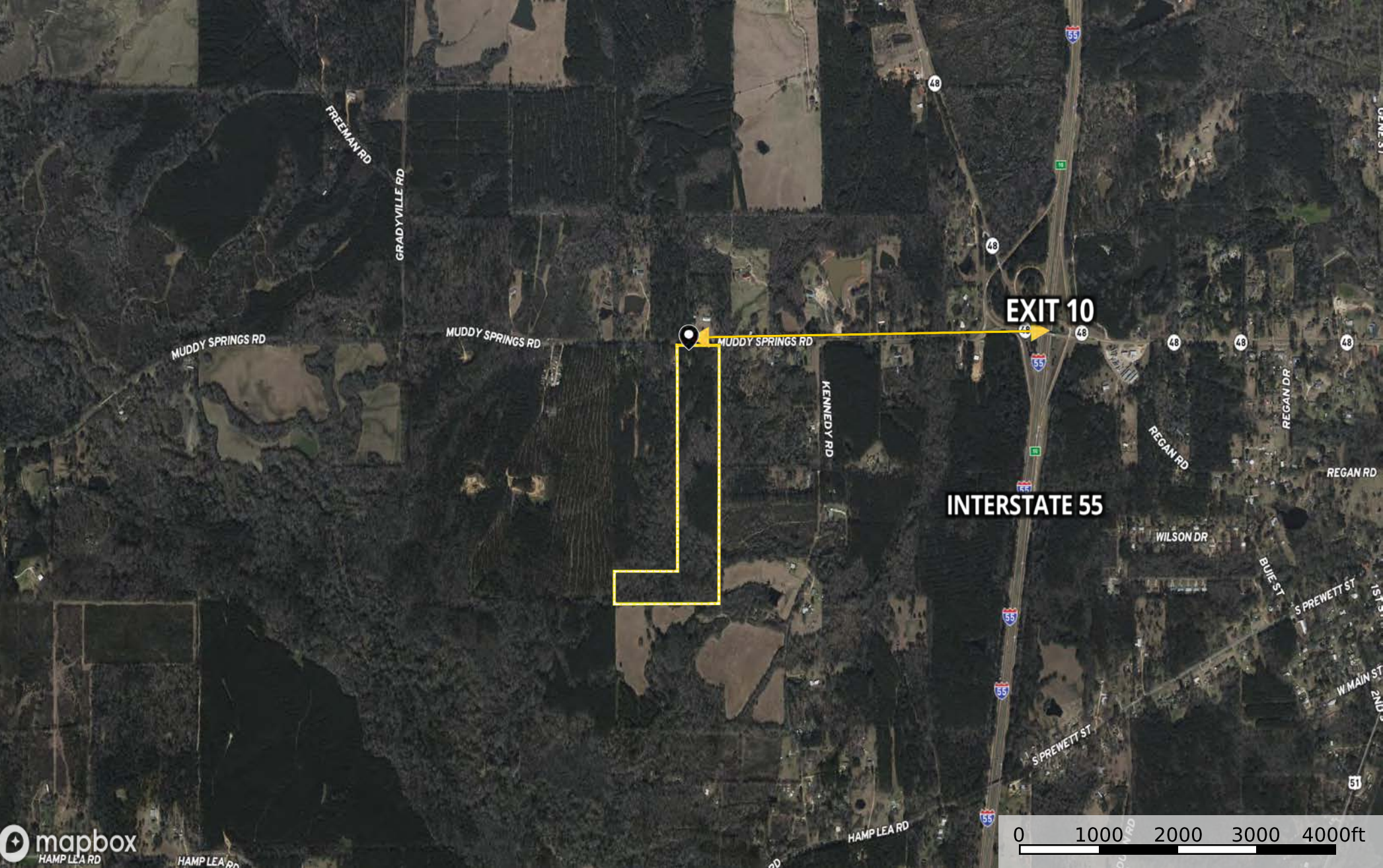
SCH - 4058 Muddy Springs Road (Magnolia, MS)  
Pike County, Mississippi, 38 AC +/-







 Boundary 1



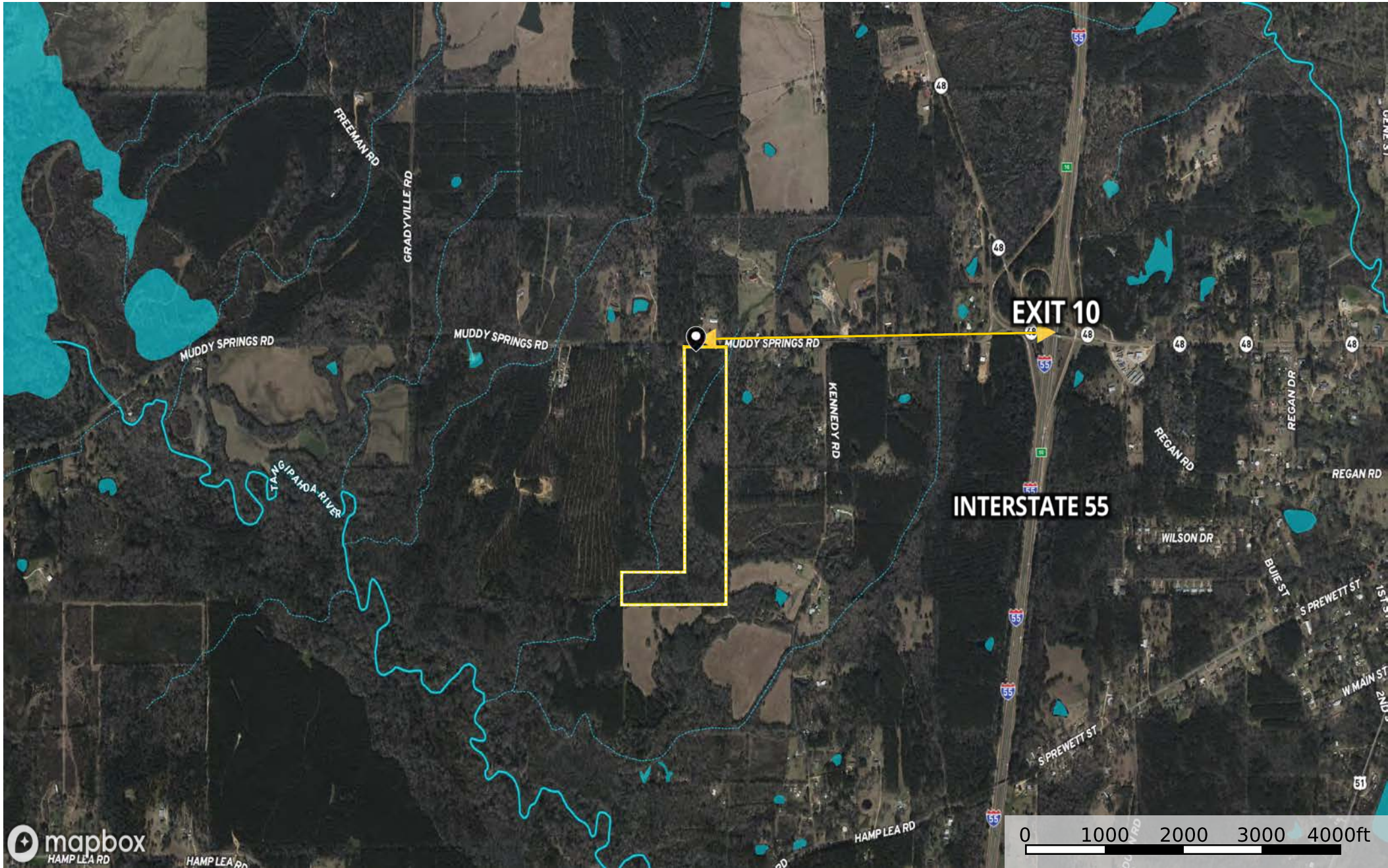
SCH - 4058 Muddy Springs Road (Magnolia, MS)  
Pike County, Mississippi, 38 AC +/-







 Marker    Primary Road    Distance    Boundary 1



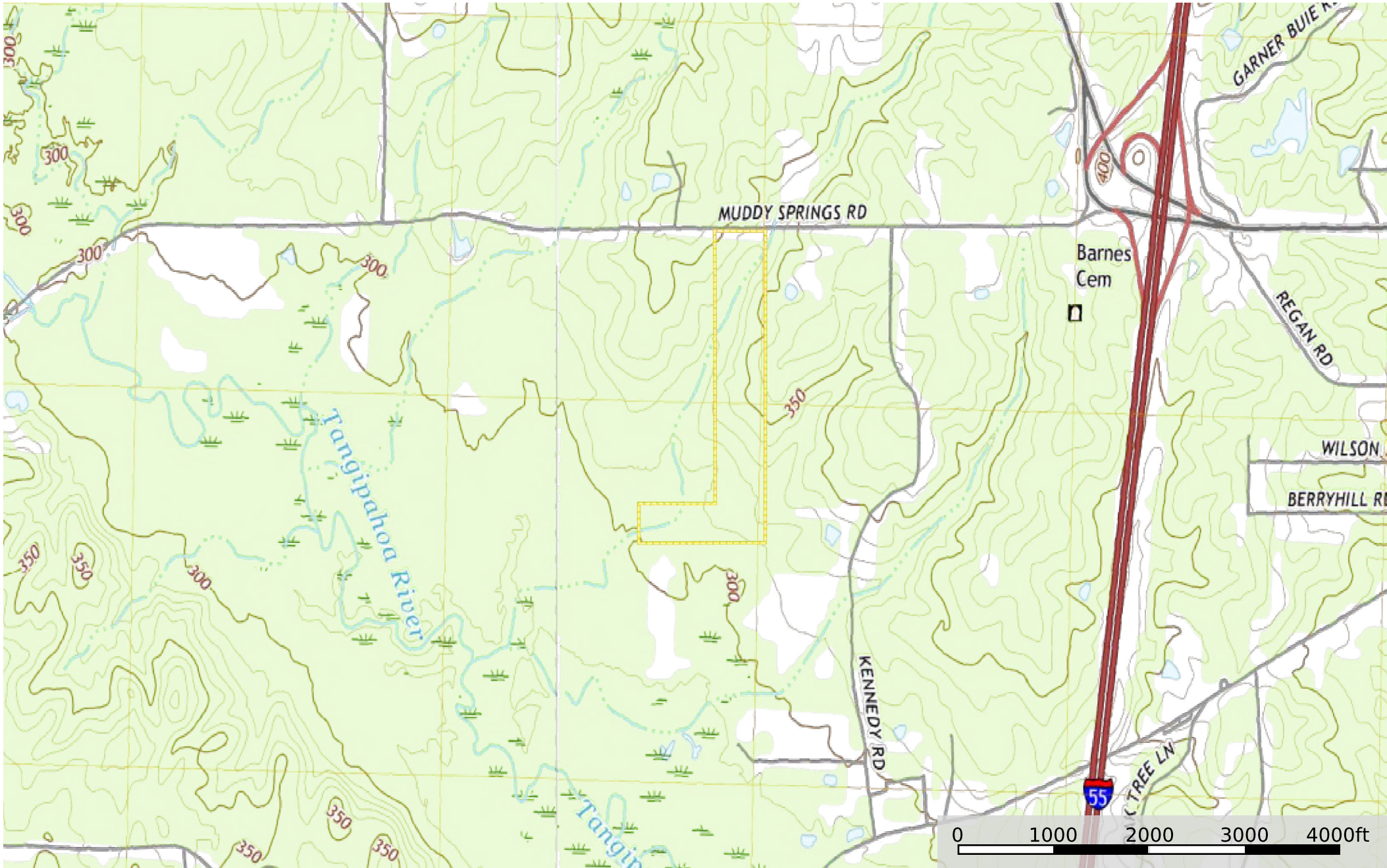
SCH - 4058 Muddy Springs Road (Magnolia, MS)  
Pike County, Mississippi, 38 AC +/-




- Marker
- Primary Road
- Distance
- Boundary 1
- Stream,  
Intermittent
- River/Creek
- Water Body



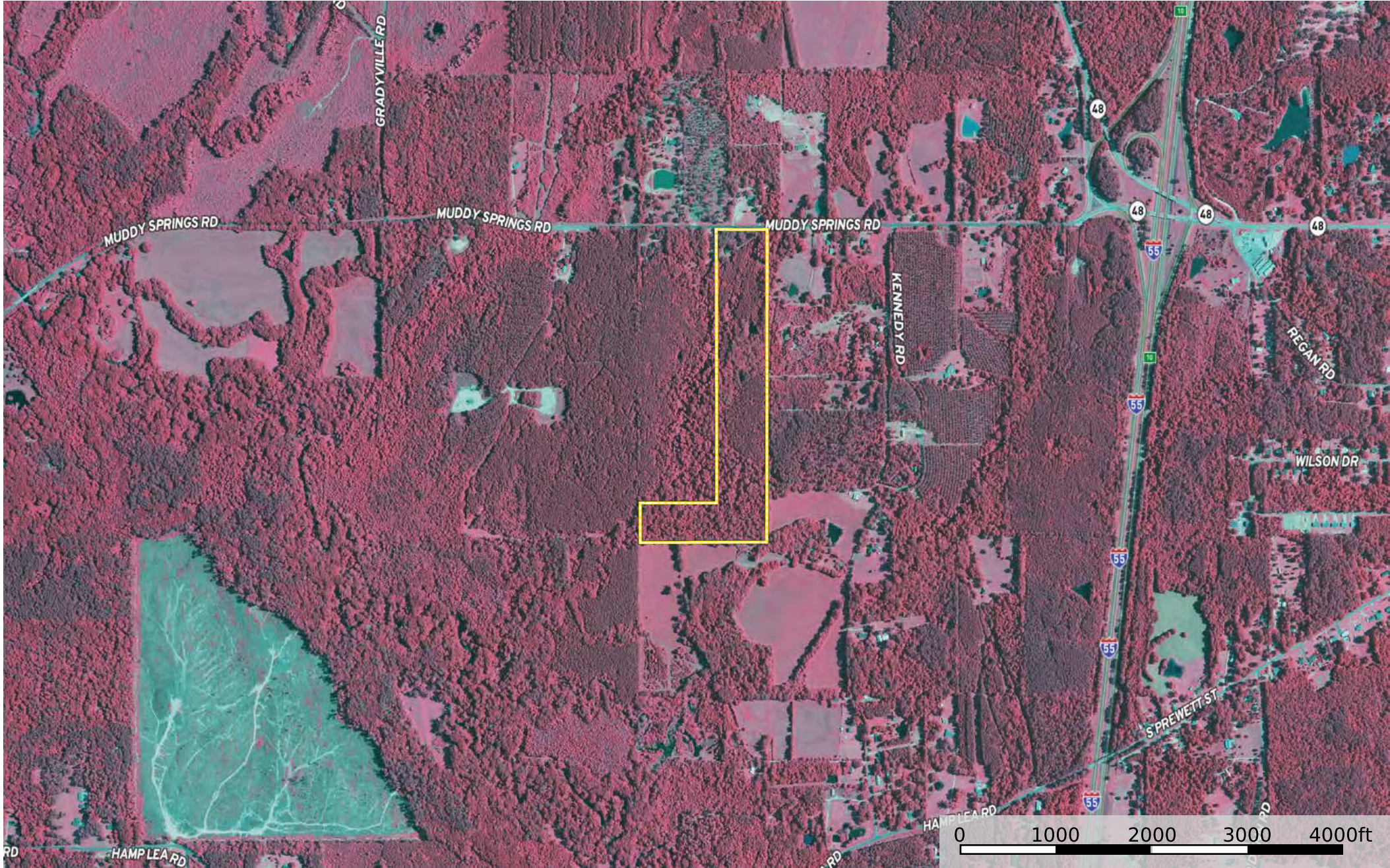
SCH - 4058 Muddy Springs Road (Magnolia, MS)  
Pike County, Mississippi, 38 AC +/-




 Boundary 1



SCH - 4058 Muddy Springs Road (Magnolia, MS)  
Pike County, Mississippi, 38 AC +/-



 Boundary 1