

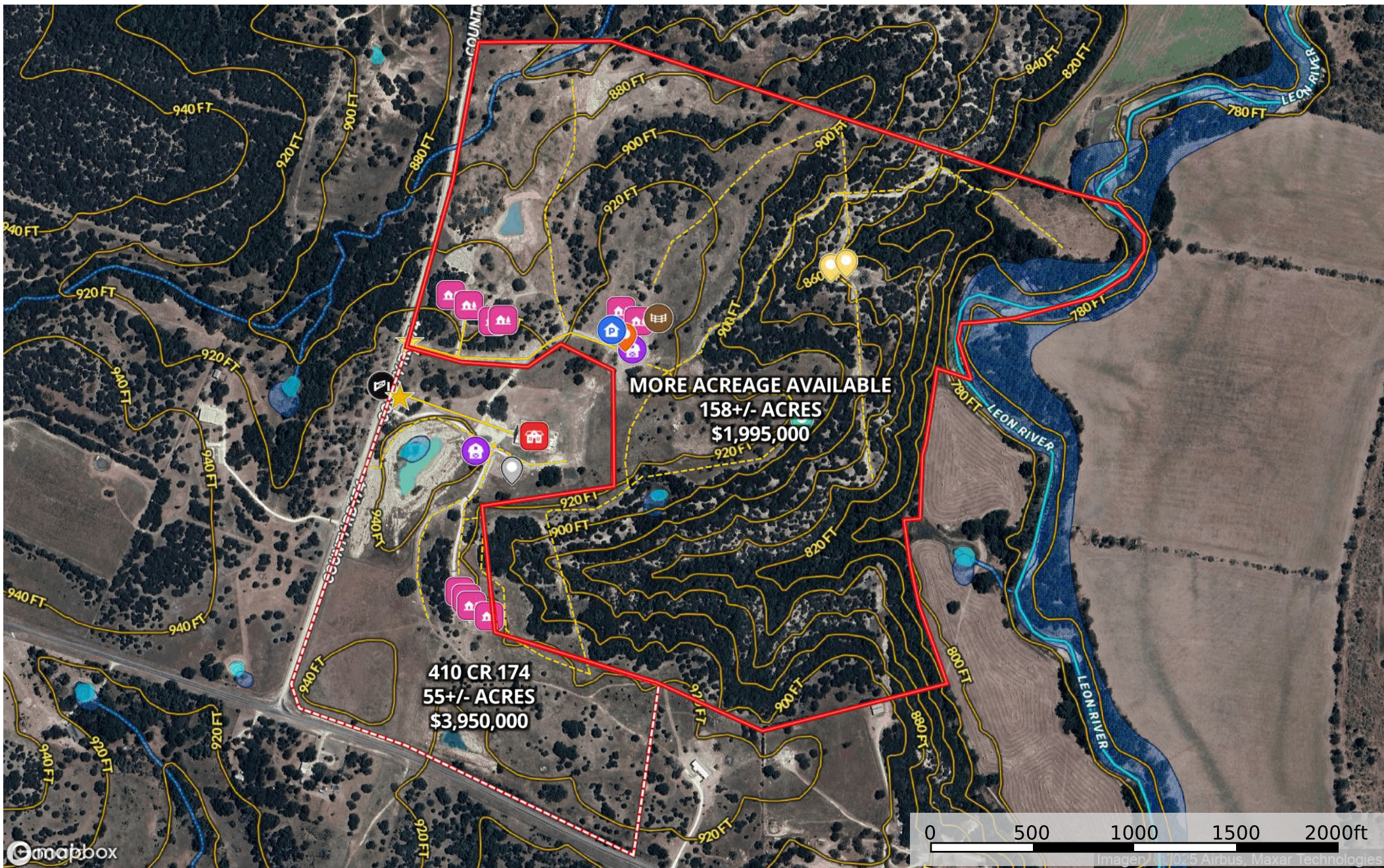
Harvey Ranch - 410 CR 174, Gatesville TX - 55+/- Acres
Coryell County, Texas, 55 AC +/-



mgpbox

- ★ Main Entrance
- 📍 Solar Panels
- 🏠 10,000 SF Barn
- 🏠 Original Barn
- 🏠 4 Guest Cabins
- 🛣️ Primary Road
- 🛣️ Road / Trail
- 📐 410 CR 174
- 🌊 Pond / Tank
- 🌊 Wetlands
- 🌿 Riparian
- 🌊 Stream, Intermittent
- 🌊 River/Creek
- 🌊 Water Body

Harvey Ranch - 410 CR 174, Gatesville TX - 55+/- Acres
Coryell County, Texas, 55 AC +/-



- Cliff
- Service Entrance
- View
- Covered Parking
- RV Hookup
- Pens
- Main Entrance
- Solar Panels
- Gate
- 10,000 SF Barndo
- Barn
- Cabin
- Primary Road
- Road / Trail
- More Acreage Available
- 410 CR 174
- Pond / Tank
- Wetlands
- Riparian
- Stream, Intermittent
- River/Creek
- Water Body

Harvey Ranch - 410 CR 174, Gatesville TX - 55+/- Acres
Coryell County, Texas, 55 AC +/-



Main Entrance

Solar Panels

10 , 000 SF Barndo

Original Barn

4 Guest Cabins

Primary Road

Road / Trail

410 CR 174

Pond / Tank

Wetlands

Riparian

Stream, Intermittent

River/Creek

Water Body

SOIL CODE	SOIL DESCRIPTION	ACRES	%	CPI	NCCPI	CAP
NuC	Nuff very stony silty clay loam, 2 to 6 percent slopes	55.54	99.95	0	28	6s
DrC	Doss-Real complex, 1 to 8 percent slopes	0.03	0.05	0	23	6e
TOTALS		55.57(*)	100%	-	28.0	6.0

(*) Total acres may differ in the second decimal compared to the sum of each acreage soil. This is due to a round error because we only show the acres of each soil with two decimal.

Capability Legend

Increased Limitations and Hazards

Decreased Adaptability and Freedom of Choice Users

Land, Capability

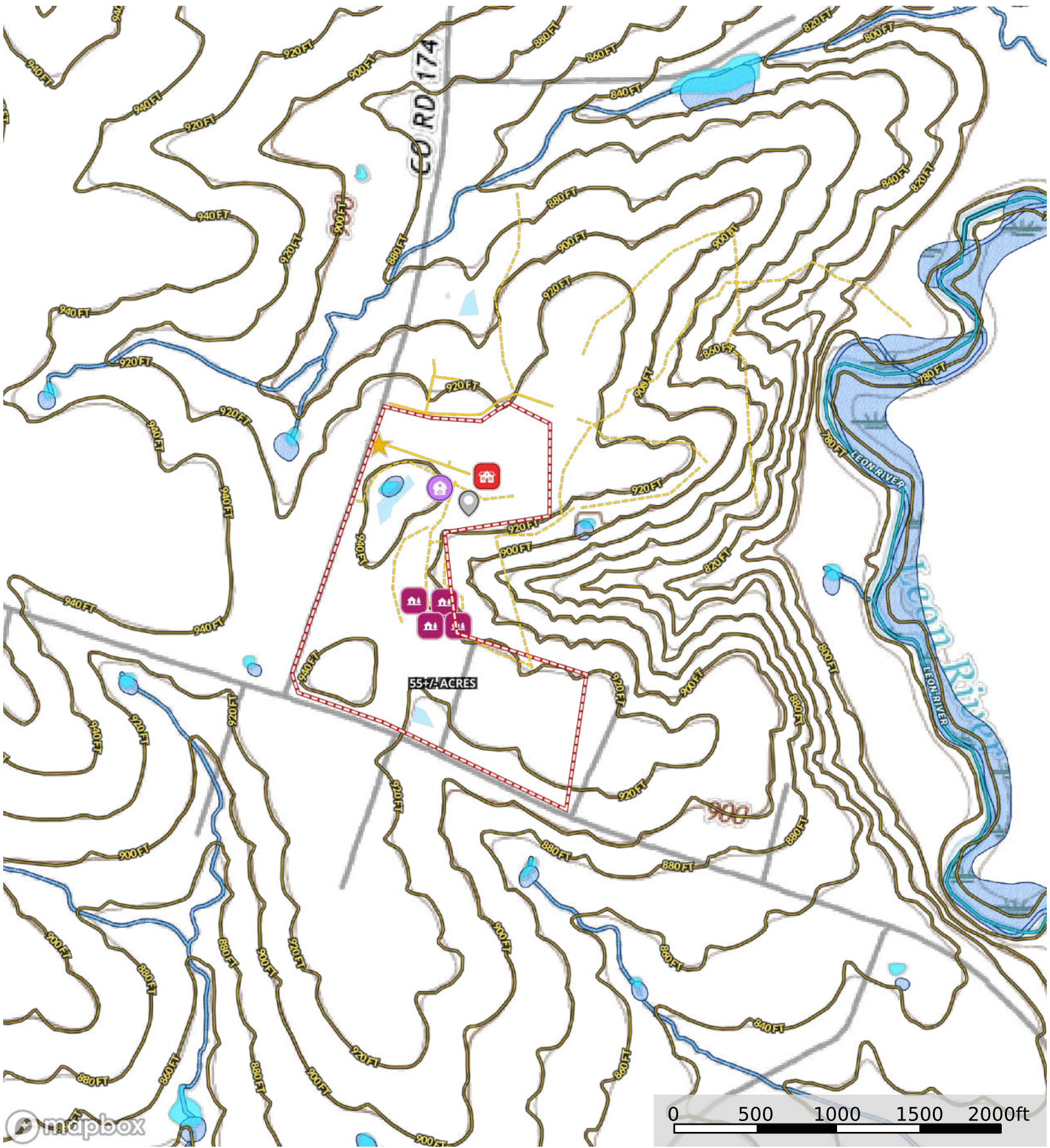
	1	2	3	4	5	6	7	8
'Wild Life'	•	•	•	•	•	•	•	•
Forestry	•	•	•	•	•	•	•	
Limited	•	•	•	•	•	•	•	
Moderate	•	•	•	•	•	•		
Intense	•	•	•	•	•			
Limited	•	•	•	•				
Moderate	•	•	•					
Intense	•	•						
Very Intense	•							

Grazing Cultivation

(c) climatic limitations (e) susceptibility to erosion

(s) soil limitations within the rooting zone (w) excess of water

Harvey Ranch - 410 CR 174, Gatesville TX - 55+/- Acres
Coryell County, Texas, 55 AC +/-



mapbox

- ★ Main Entrance
- 📍 Solar Panels
- 🏠 10,000 SF Barndo
- 🏠 Original Barn
- 🏠 4 Guest Cabins
- Primary Road
- - - Road / Trail
- 🔺 410 CR 174
- 🟦 Pond / Tank
- 🟦 Wetlands
- 🟦 Riparian
- 🟦 Stream, Intermittent
- 🟦 River/Creek
- 🟦 Water Body