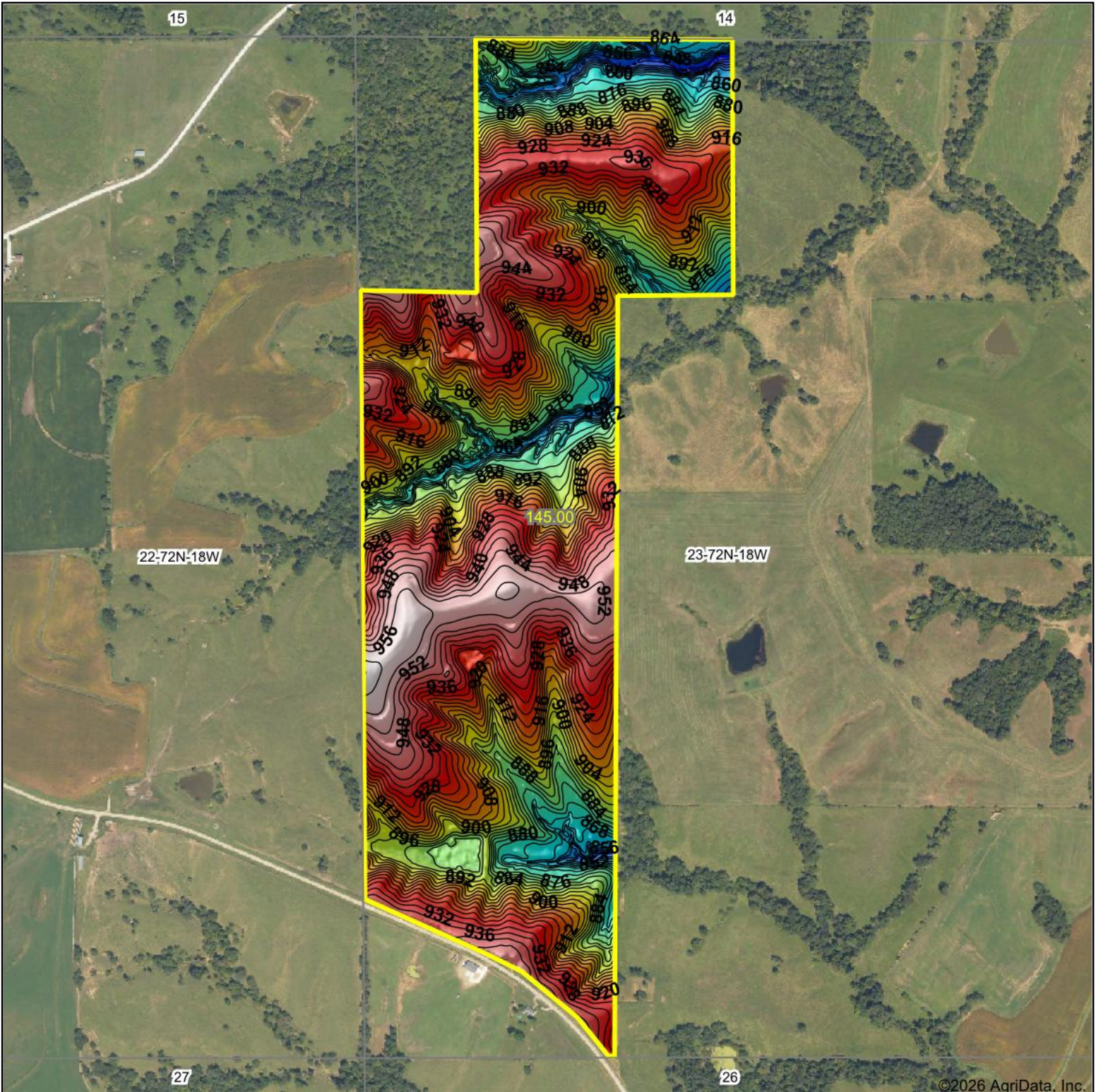
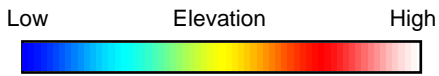


Topography Hillshade

Boundary Lines Are Approximate



©2026 AgriData, Inc.



Source: USGS 3 meter dem



Interval(ft): 4

Min: 831.6

Max: 962.6

Range: 131.0

Average: 910.8

Standard Deviation: 27.89 ft



1/27/2026

23-72N-18W
Monroe County
Iowa

Boundary Center: 41° 1' 22.3, -92° 54' 13.64



© AgriData, Inc. 2025 www.AgriDataInc.com