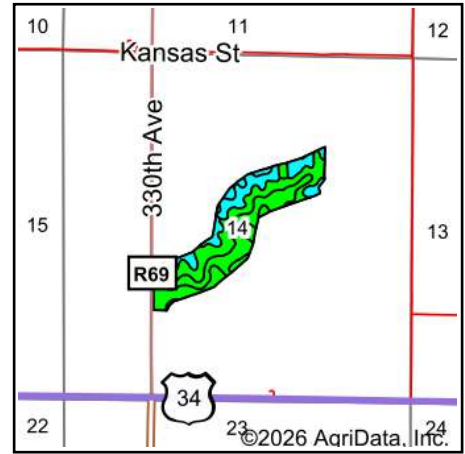
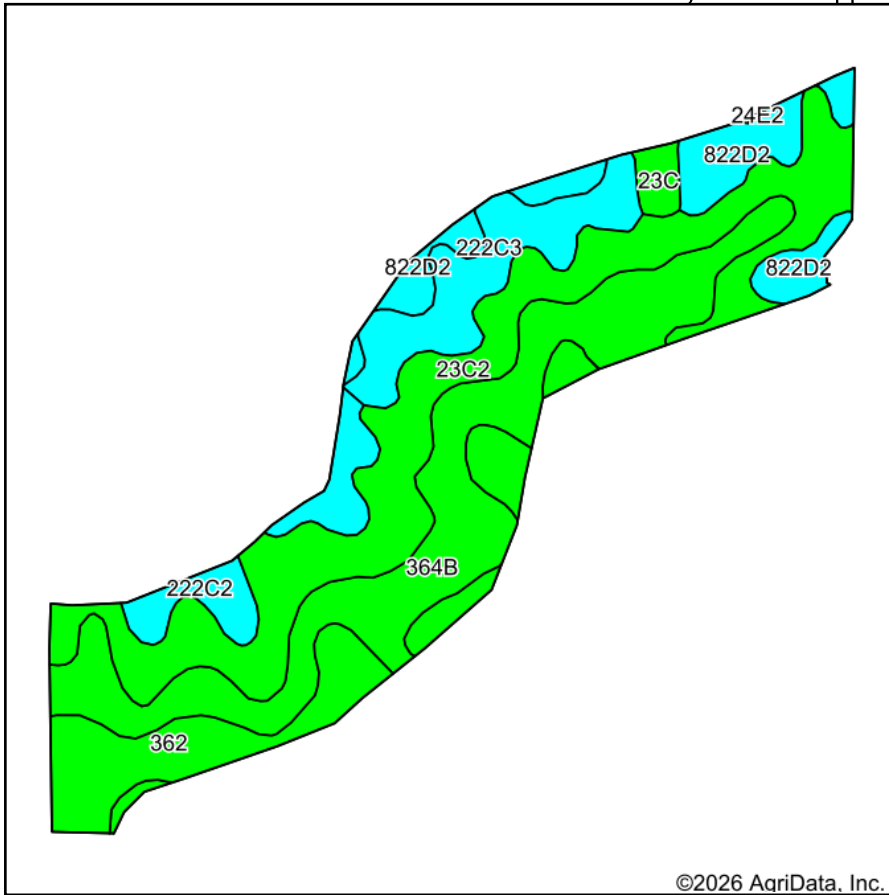


Soils Map

Boundary Lines Are Approximate



State: **Iowa**
 County: **Clarke**
 Location: **14-72N-24W**
 Township: **Jackson**
 Acres: **49.58**
 Date: **2/20/2026**



Soils data provided by USDA and NRCS.

©2026 AgriData, Inc.

© AgriData, Inc. 2025

www.AgriDataInc.com

Area Symbol: IA039, Soil Area Version: 31

Code	Soil Description	Acres	Percent of field	CSR2 Legend	Non-Irr Class *c	CSR2**	CSR	*n NCCPI Corn	*n NCCPI Soybeans	
23C2	Arispe silty clay loam, 5 to 9 percent slopes, moderately eroded	17.13	34.5%		IIIe	62	50	73	68	
364B	Grundly silty clay loam, 2 to 5 percent slopes	13.89	28.0%		Ile	72	75	79	68	
362	Haig silt loam, 0 to 2 percent slopes	5.00	10.1%		IIw	83	70	74	65	
222C3	Clarinda silty clay, 5 to 9 percent slopes, severely eroded	4.99	10.1%		Vle	21	15	40	25	
822D2	Lamoni clay loam, 9 to 14 percent slopes, moderately eroded	4.91	9.9%		IVe	11	15	63	44	
222C2	Clarinda silty clay loam, 5 to 9 percent slopes, moderately eroded	2.94	5.9%		IVw	28	25	54	42	
23C	Arispe silty clay loam, 5 to 9 percent slopes	0.72	1.5%		IIIe	66	55	78	71	
Weighted Average						3.08	55.8	50.6	*n 69.4	*n 59.5

**IA has updated the CSR values for each county to CSR2.

*n: The aggregation method is "Weighted Average using all components"

*c: Using Capabilities Class Dominant Condition Aggregation Method