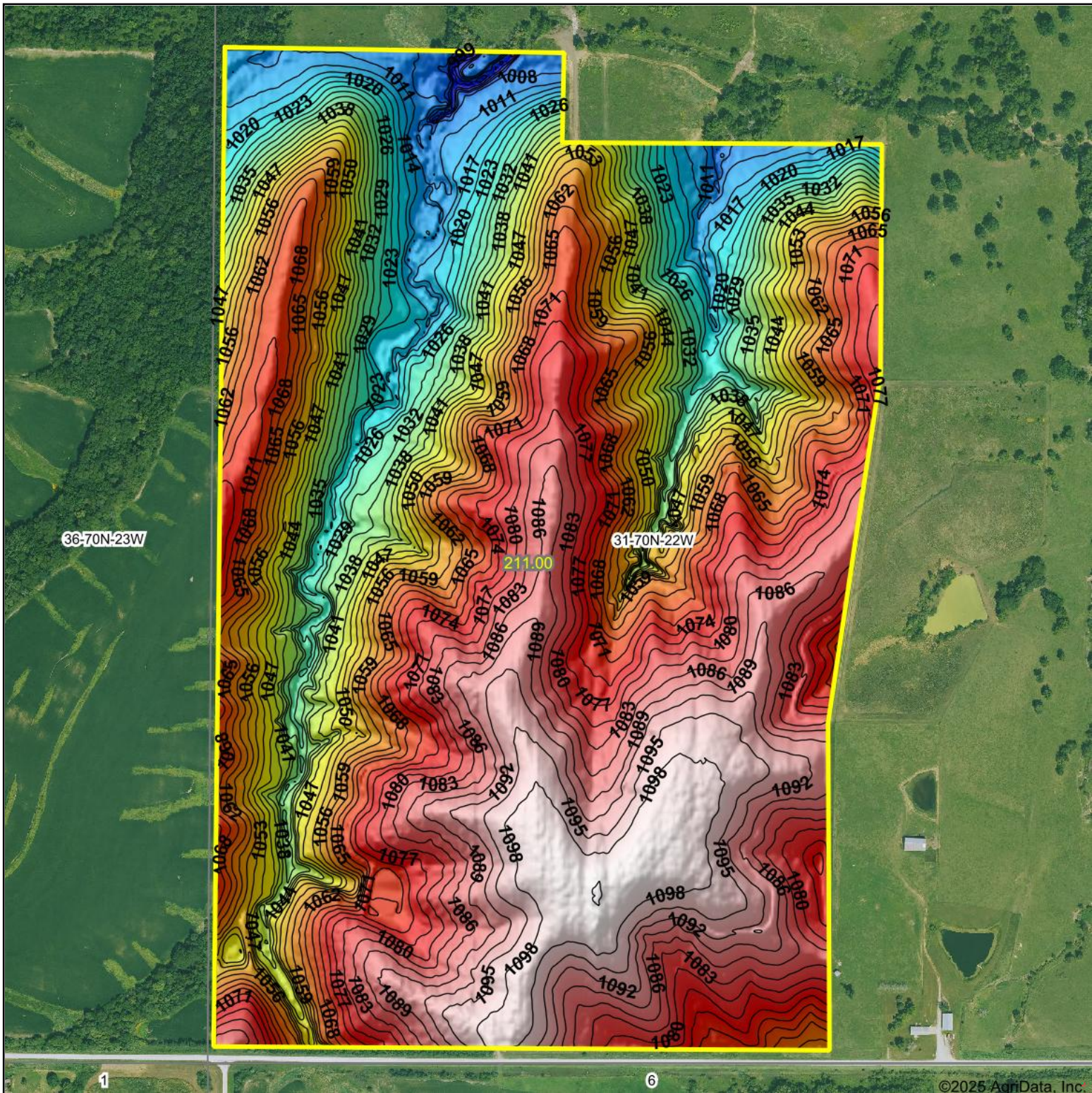
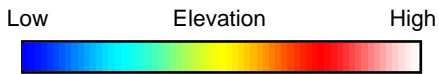


Topography Hillshade

Boundary Lines Are Approximate



©2025 AgriData, Inc.



Hawkeye Farm Mgmt & Real Estate

United Country Real Estate
 22 N Main, Ames, IA Phone: 515-232-7795
 Email: hawkeye@iowarealestate.com
 Website: www.iamhawkeye.com

Maps Provided By:

surety
 CUSTOMIZED ONLINE MAPPING

© AgriData, Inc. 2023 www.AgriDataInc.com

Source: USGS 3 meter dem

Interval(ft): 3

Min: 994.9

Max: 1,102.0

Range: 107.1

Average: 1,062.6

Standard Deviation: 24.7 ft

0ft 607ft 1213ft



6/12/2025

31-70N-22W
Wayne County
Iowa

Boundary Center: 40° 49' 1.19, -93° 26' 15.49